

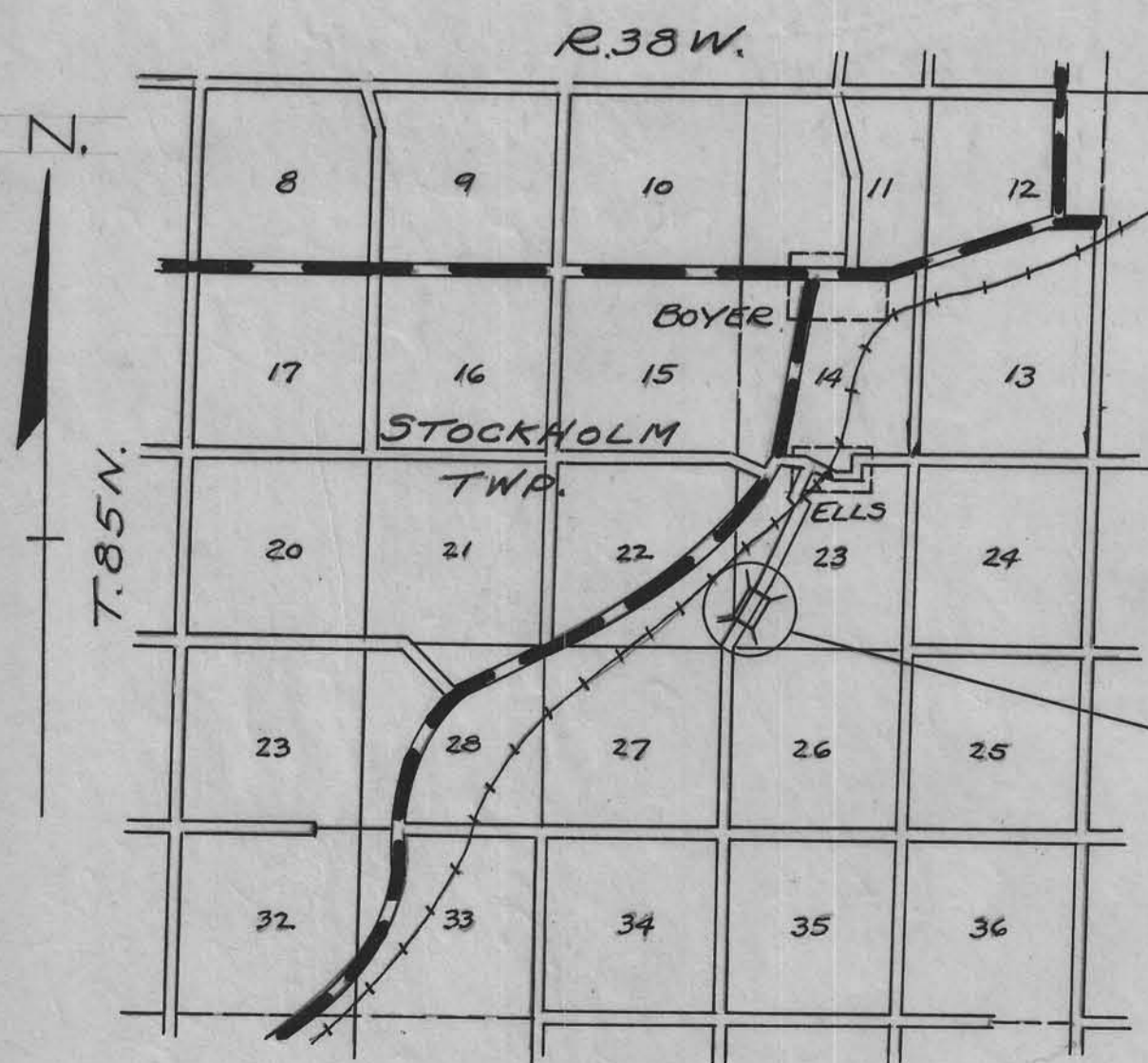
STATE OF IOWA
 STATE HIGHWAY COMMISSION
 DESIGN FOR
 55'x20' PRE-STRESSED CONCRETE BEAM BRIDGE
 SECONDARY ROAD SYSTEM PROJ. NO. 60-1B
 CRAWFORD COUNTY
 SEPT. - 1958.

MILEAGE SUMMARY: = 57'-0" = 0.01079 MILES.

SPECIFICATIONS:
 Design: A.A.S.H.O. Series of 1953, and U.S.B.P.R. Criteria for Prestressed Concrete Bridges, 1955.
 Construction: Standard Specifications of the Iowa State Highway Commission, Series of 1960, plus current Special Provisions except as noted.

DESIGN- STOCKHOLM TWP. CRAWFORD COUNTY					
SEC.-23. STA. 226+62.50 OVER TUCKER CREEK					
55'x20' PRESTRESSED CONCRETE BEAM BRIDGE					
DESCRIPTION.	ABUTMENTS.		SUPERSTRUCT.		TOTAL
CONCRETE Class-"3"	10.80	C.Y.	28.90	C.Y.	39.70 C.Y.
REIN. STEEL	1140	LBS.	6459	LBS.	7599 LBS.
STRUCT. STEEL.	2452	"	1078	"	3530 "
PRE-STRESSED CONC. BEAMS.			5 @ 55'-0" (a)		5 @ 55'-0" (a)
HANDRAIL, E-End Post			130'-0"	L.F.	130'-0" L.F.
WOOD RAIL POSTS 8"x6'			4		4
TREATED WOOD TRESTLE PILING	12 @ 35' 4 @ 25'		8 @ 30'	= 760 L.F.	760 L.F.
TREATED LUMBER	4392	F.B.M.			4392 F.B.M.
GALVANIZED HARDWARE	134	LBS.	32	LBS.	166 LBS.
EXCAVATION Class #20	240	C.Y.			240 C.Y.
" Class #10	195	C.Y.			195 C.Y.
" Class #21	12	C.Y.			12
REMOVAL OF OLD STRUCTURE					LUMP SUM.

NOTE: Bridge Sign Assemblies Will be furnished & placed by Crawford County to conform with S. & T. Instruction No. 11, revised March-1, 1956.



DESIGN NO.
 PROJECT NO. 60-1B

LOCATION MAP
 1" = 1 MILE.

APPROVED.

Charles J. Smith

Wm J. Arnessen

Walter P. Wether

Olto Kuehl

BOARD OF SUPERVISORS DATE 7-6-60

APPROVED.

CHIEF ENGINEER DATE
 IOWA HIGHWAY COMMISSION.

DEPARTMENT OF COMMERCE
 BUREAU OF PUBLIC ROADS.

RECOMMENDED FOR APPROVAL.

DISTRICT ENGINEER. DATE

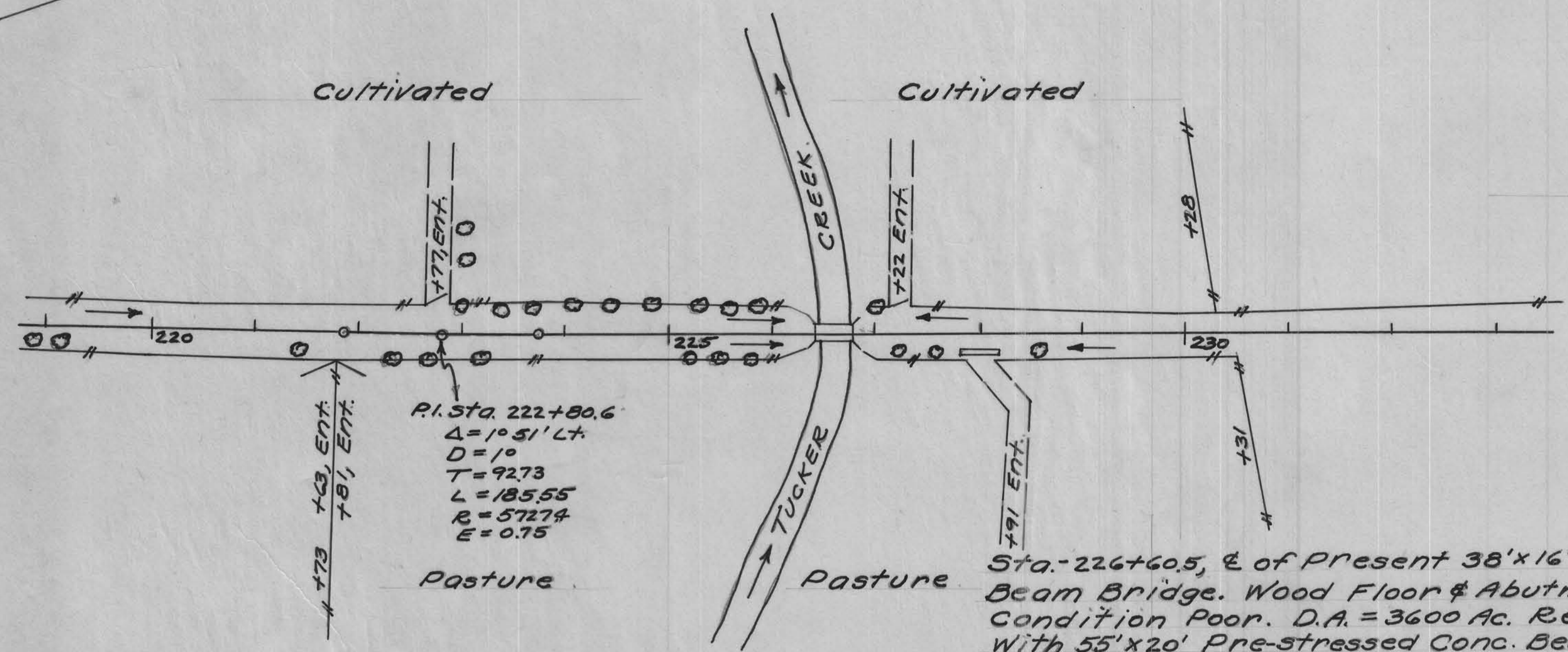
APPROVED

DIVISION ENGINEER. DATE

Sheet #1 of 2

STOCKHOLM TOWNSHIP
T. 85 N. R. 38 W.

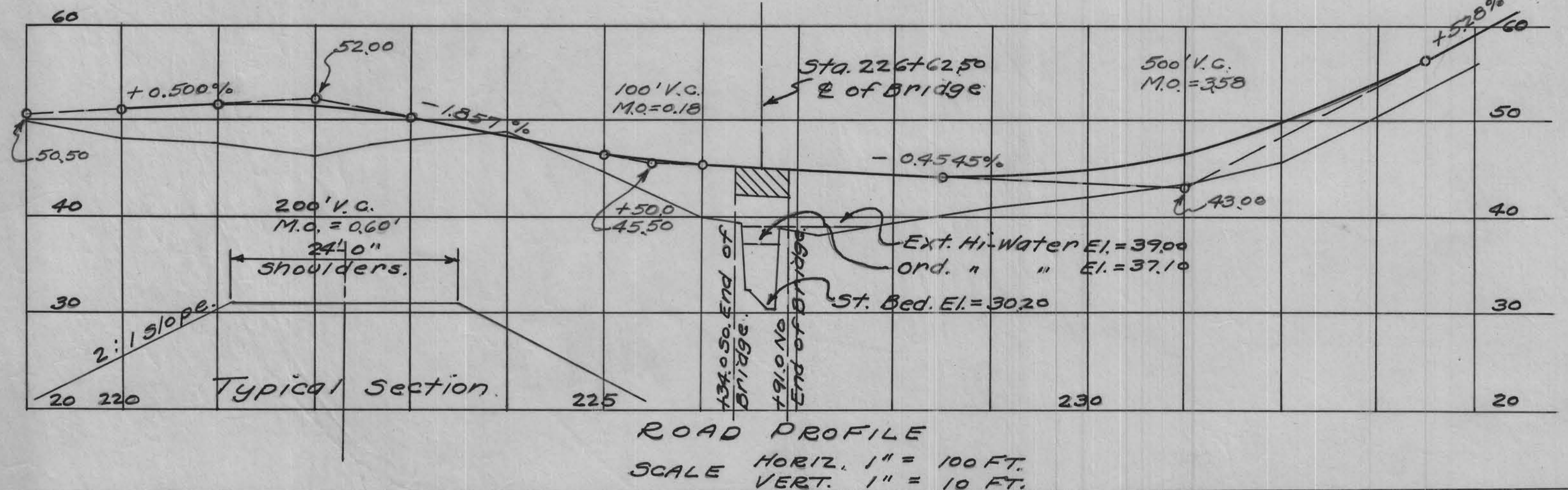
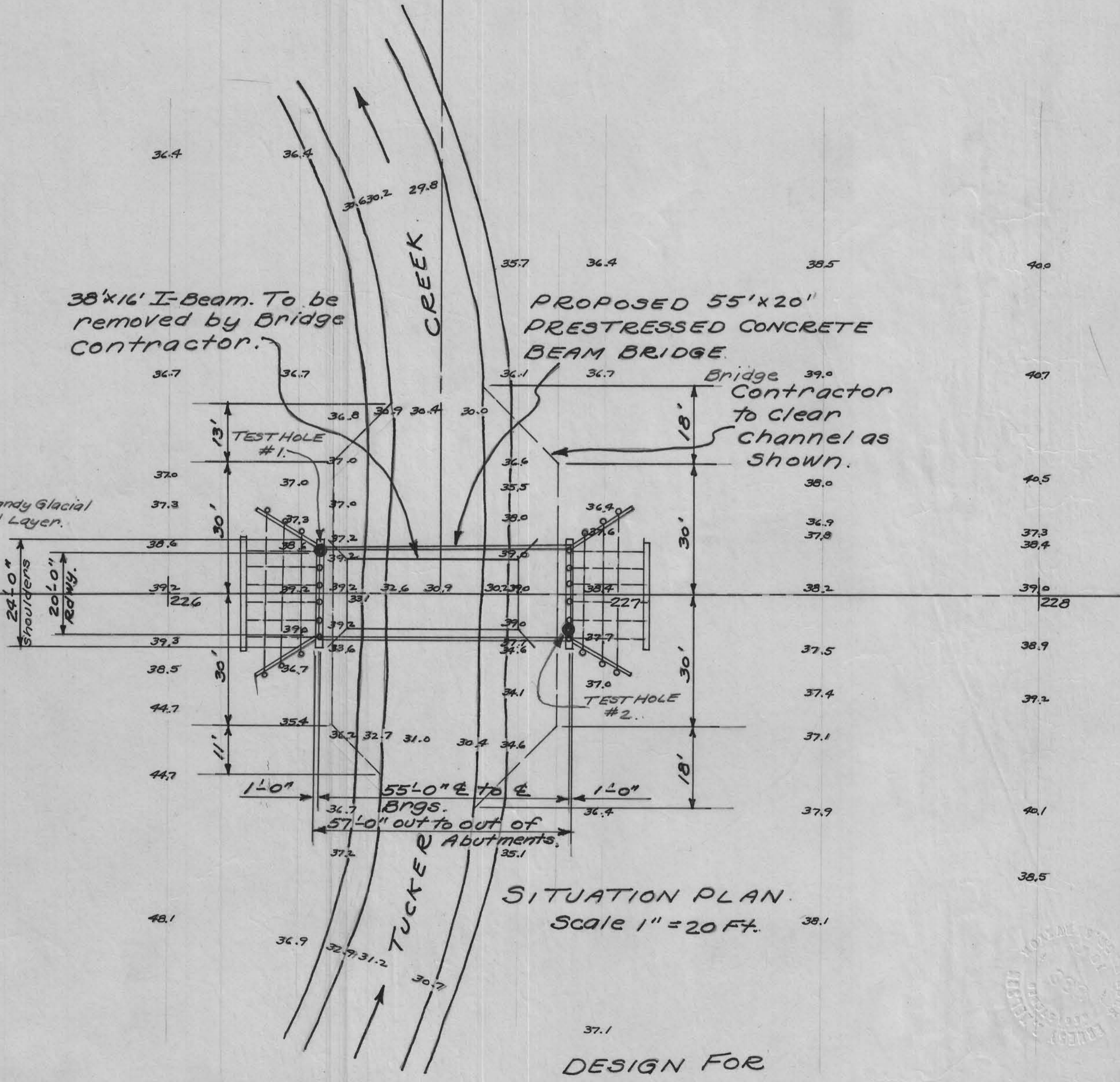
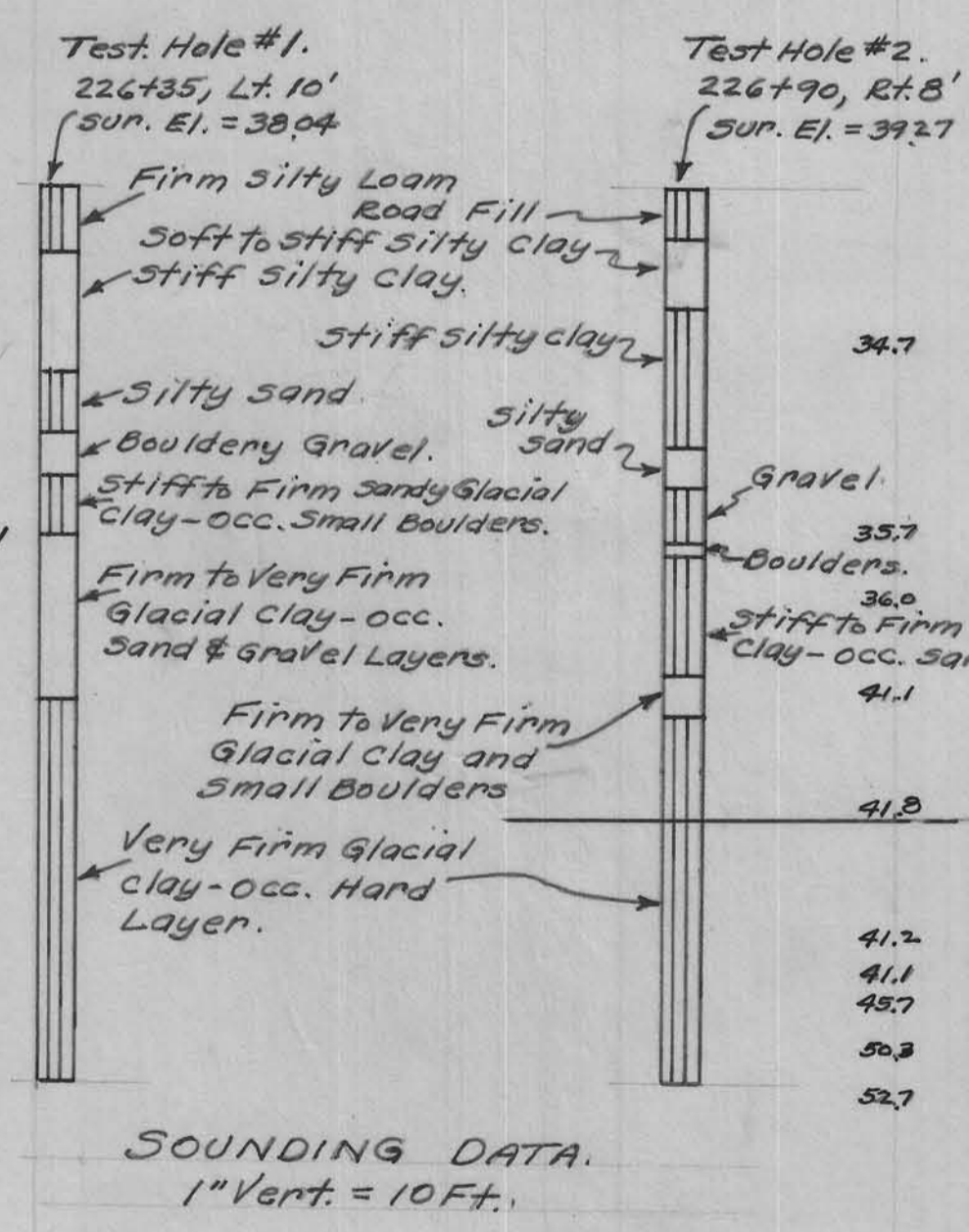
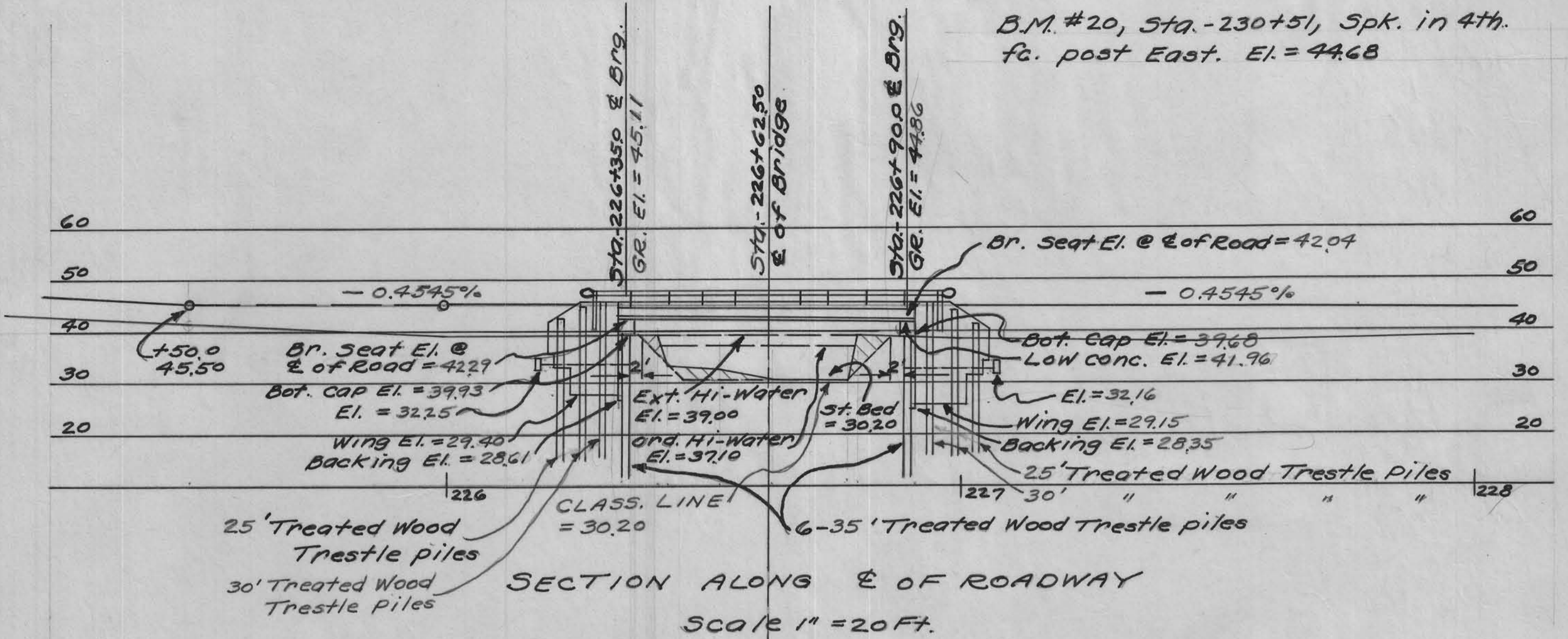
SEC. -23.



Sta. -226+60.5, E of Present 38'x16' I-Beam Bridge. Wood Floor & Abutments. Condition Poor. D.A. = 3600 Ac. Replace With 55'x20' Pre-stressed Conc. Beam Bridge. Treated Wood Sub-structure, Concrete Floor, Type "B" Steel Rail. Contractor to remove present bridge & pile within 300' of bridge site as directed by the Engineer. Locate E of New Bridge at Sta. -226+62.50

GENERAL NOTES:

All Lumber is to be creosoted. Backing & Wing plank in 10" & 12" widths may be substituted for 8" plank shown but payment will be made on basis of quantities shown. All piling are to be creosoted & are to comply with the specifications for Treated Timber Trestle piles. All hardware is to be galvanized. C.I. ogee or malleable Washers are to be used under all heads & nuts bearing on wood. All bolts to have square heads & nuts. For details of Super-structure refer to Iowa Highway Commission Standard H11-1 With Type "B" Rail & curb. For details of sub-structure refer to Iowa Highway Commission Standard H11-4 With Hof 15'. All materials & construction to conform with the Iowa Highway Commission Standard Specifications, Series of 1960.



DESIGN FOR
55'x20' PRESTRESSED CONCRETE BEAM BRIDGE
CONCRETE FLOOR-TYPE-B STEEL RAIL
Location: Section-23, Stockholm Twp., Crawford County, Iowa.
PROJECT No. STA-226+62.50
Sheet #2 of 2

BRIDGE 130510 25 572 253 253 10-1 253