

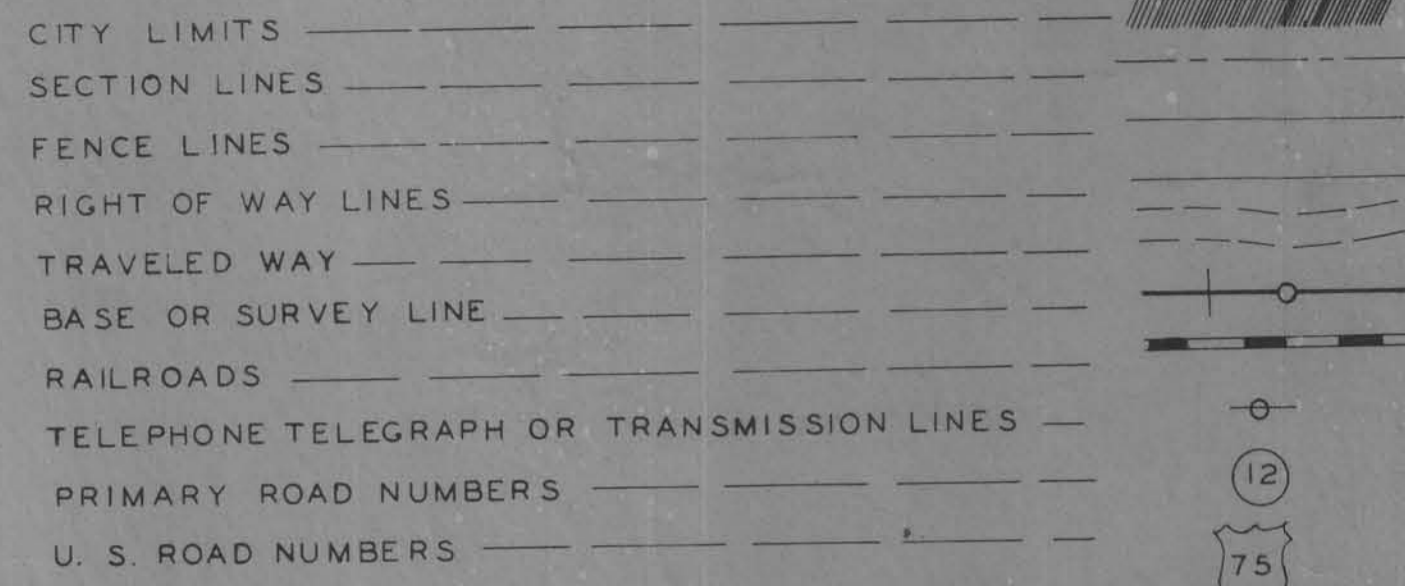
#130930

Paul's Copy

Project Number:		CRAWFORD COUNTY DAY LABOR PROJECT SHEET																												Date: June 20, 2012								
Location: 120612s														Section: 19&20														Township: Soldier										
Description of Work:		Replace bad deck plank in the wheel tracks to open it up so bridge inspectors can inspect cross beams																												FHWA No:								
For the month of:																														Bridge Type:								
June																																						
Employee	Hours worked per day																															Total Hours	Hourly Rate	Totals				
	1	2	3	4	5	6	7	8	9	10	11	12	13	14	15	16	17	18	19	20	21	22	23	24	25	26	27	28	29	30	31							
Terry Lally																																			5	5	\$ 47.15	\$235.75
Dan Blunk																																		5	5	\$ 42.54	\$212.70	
Howard Clark																																		5	5	\$ 34.98	\$174.90	
Kenny Miller																																		5	5	\$ 34.19	\$170.95	
Tim Beery																																		5	5	\$ 31.91	\$159.55	
Matt Eiton																																		5	5	\$ 11.54	\$57.70	
Dillon Crook																																		0	0	\$ 10.94	\$0.00	
																																		0	0	\$ -	\$0.00	
																																			0	0	\$ -	\$0.00
																																			0	0	\$ -	\$0.00
																																			0	0	\$ -	\$0.00
																																	Labor Cost:		\$1,011.55			
Equipment	Hours worked per day																															Total Hours	Hourly Rate	Totals				
	1	2	3	4	5	6	7	8	9	10	11	12	13	14	15	16	17	18	19	20	21	22	23	24	25	26	27	28	29	30	31							
#44 Skid Loader																																			4	4	\$ 83.90	\$335.60
#73 Link Belt Crane																																			0	0	\$117.97	\$0.00
#103 Tele-Crane																																			0	0	\$107.68	\$0.00
#75 IH Dozer																																			0	0	\$ 51.45	\$0.00
#59 J. D. Dozer																																			0	0	\$ 33.58	\$0.00
#32 J.D. crawler																																			0	0	\$ 33.58	\$0.00
#97 air comp.																																			0	0	\$ 10.00	\$0.00
#63 Welder																																			0	0	\$ 10.00	\$0.00
#18 Tool Truck																																			0	0	\$ 6.94	\$0.00
#68 Cat Excavater																																			0	0	\$ 83.90	\$0.00
																																			0	0	\$ -	\$0.00
																																			0	0	\$ -	\$0.00
																																	Equipment Costs:		\$335.60			
No. of pieces	Size	Materials List		Sockpile location or purchased from	New/ Used	No. Units	* Units	Unit Cost	Total Costs	Total Labor Costs: \$1,011.55																												
		Description of materials used																																				
24	20'	3"x12" plank		stock	New/	480	In. ft.	\$ 3.58	\$ 1,718.40																													
10	lbs.	#60 ring shank spikes		stock		10	lbs.	\$ 1.04	\$ 10.40	Materials (page 1): \$ 1,728.80																												
								\$ -	\$ -	Materials (page 2): \$ -																												
								\$ -	\$ -																													
								\$ -	\$ -																													
								\$ -	\$ -																													
								\$ -	\$ -																													
								\$ -	\$ -																													
								\$ -	\$ -																													
								\$ -	\$ -																													
								\$ -	\$ -																													
										Total Labor Costs:		\$1,011.55																										
										Total Material Cost:		\$1,728.80																										
										Equipment Costs:		\$335.60																										
										Total Costs:		\$3,075.95																										
										Material Costs (page 1):		\$ 1,728.80																										

FED. ROAD DIST. NO.	STATE	ER PROJ. NO.	FISCAL YEAR	SHEET NO.	TOTAL SHEETS
1	IOWA	65(1)	1962	1	2

CONVENTIONAL SIGNS



PLAN & PROFILE OF PROPOSED IMPROVEMENT ON THE
SECONDARY ROAD SYSTEM
CRAWFORD COUNTY

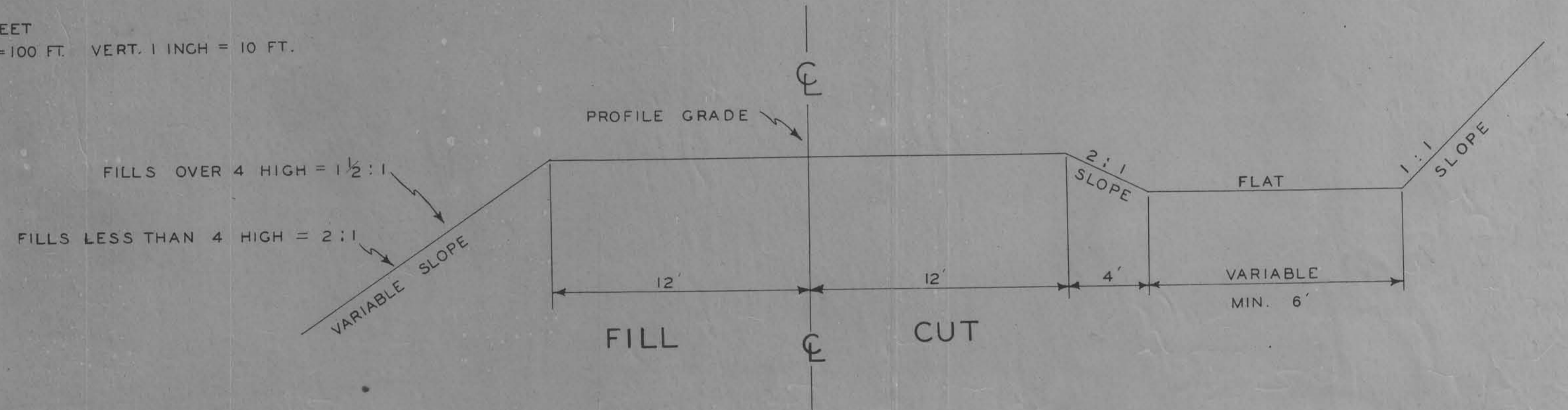
PROJECT NO. ER-65 (1)

THE IOWA STATE HIGHWAY COMMISSION STANDARD SPECIFICATIONS FOR CONSTRUCTION WORK, SERIES OF 1952, SHALL APPLY TO WORK ON THIS PROJECT

SCALES { PLAN 1 INCH = 100 FEET
PROFILE HOR. 1 INCH = 100 FT. VERT. 1 INCH = 10 FT.

MILEAGE SUMMARY

TYPICAL CROSS SECTION



CLASS 10 EXCAVATION CU. YDS.	OVERHAUL STA. YDS.	RECLAIMING, STOCKPILING, AND SPREADING PRESENT SURFACING MATERIAL CU. YDS.	ROADWAY PIPE CULVERTS LIN. FT.												CLASS 23 EXCAVATION CU. YDS.	ENTRANCE PIPE CULVS. LIN. FT.				REMOVAL OF EXISTING STRUCTURES LUMP SUM	REMOVAL AND RE-LAYING OF PRESENT ROADWAY PIPE CULVERTS LIN. FT.				REMOVAL AND RE-LAYING OF PRESENT ENTRANCE PIPE CULVERTS LIN. FT.				50° REFLECTOR CROSSING SIGN ASSEMBLY NO.	NARROW BRIDGE SIGN ASSEMBLY NO.	CLEARING AND GRUBBING ESTIMATE			
			CONCRETE						CORRUGATED METAL							18"	24"	30"	36"		18"	24"	30"	36"	18"	24"	30"	36"						
			18"	24"	30"	36"	42"	48"	54"	60"	18"	24"	30"	36"	42"	48"	54"	60"	CU. YDS.	18"	24"	30"	36"	18"	24"	30"	36"	18"	24"	30"	36"			

ESTIMATE OF QUANTITIES

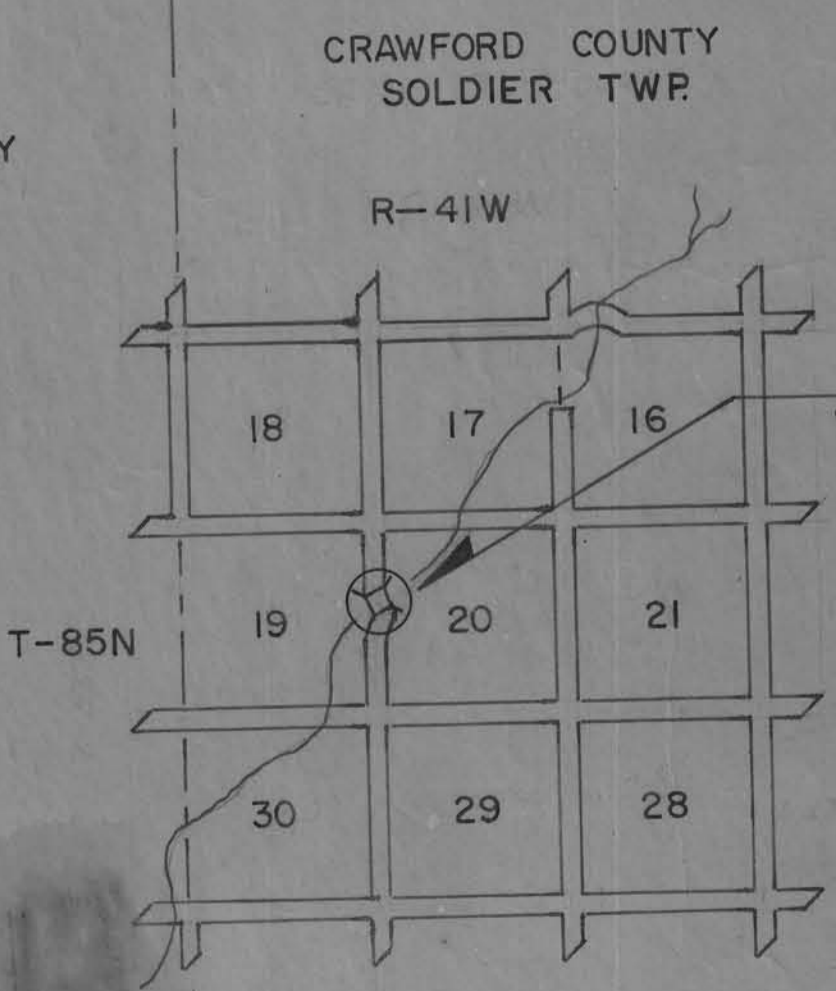
EQUIPMENT RENTAL	LABOR	MATERIALS					TOTAL COST	
		CREOSOTED PILES	CREOSOTED PLANK	STEEL BEAMS	HARDWARE	MISC.		
COST	COST	COST	COST	COST	COST	COST		
TOTALS	612.25	1,018.30	1,341.60	882.14	1,100.00	86.19	10.15	5,050.63

CREO. PILING: 3 @ 50'-150 LF
16 @ 40'-640 LF
20 @ 16'-320 LF
1130 LF

CREO. LUMBER: 4,924 BD. FT.
UNTR. LUMBER: 162 BD. FT.

COMPLETE 34'-I-BEAM SPAN 18" BEAMS & 2,40'X18" I-BEAMS (APPROX. 18,000 LBS. STR. STEEL)

122'-6" X 18' HIGH TRUSS BRIDGE WITH 34'X18' I BEAM APPROACH SPAN ADDED TO SOUTH END UNDER PROJ. NO. ER-65(1) Sta. 5+45.0



APPROVED _____ DATE _____

CHAIRMAN _____

APPROVED _____ DATE _____

BOARD OF SUPERVISORS _____

APPROVED _____ DATE _____

DISTRICT ENGINEER IOWA HIGHWAY COMMISSION _____ DATE _____

APPROVED _____ DATE _____

COUNTY ENGINEER _____ DATE _____

1/2



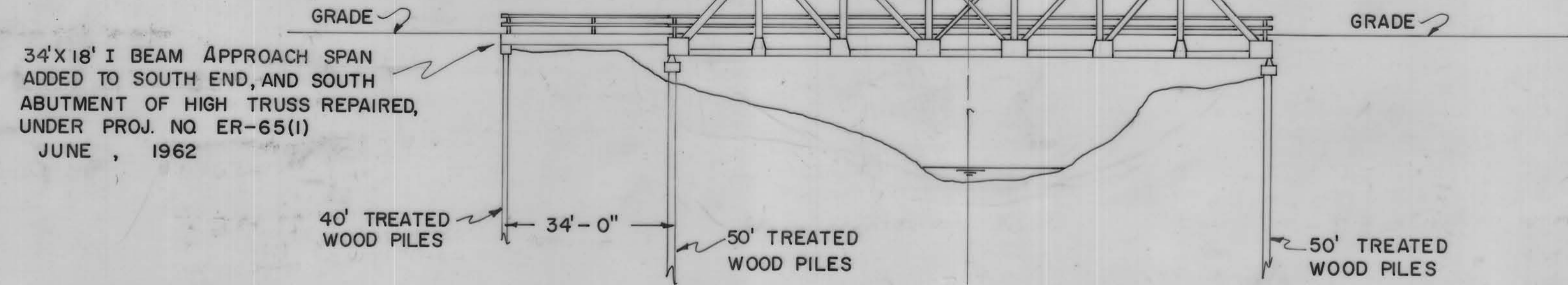
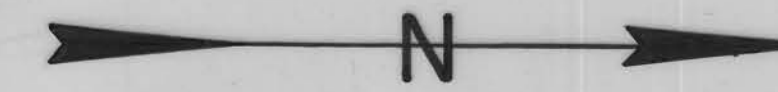
AUG 13 1962

Design 1162

CRAWFORD COUNTY - PROJECT # ER-65(1)

File # 21655 SHEET # 1

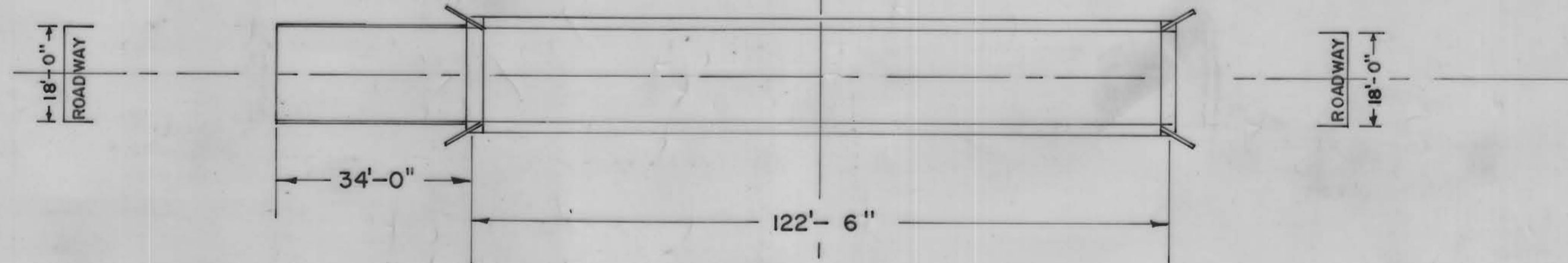
SOLDIER TOWNSHIP
T-85N R-41W
BET. SEC. 19 & 20



34'X18' I BEAM APPROACH SPAN
ADDED TO SOUTH END, AND SOUTH
ABUTMENT OF HIGH TRUSS REPAIRED,
UNDER PROJ. NO ER-65(1)
JUNE , 1962

LONGITUDINAL VIEW

SCALE: 1" = 20'



PLAN VIEW

ESTIMATE OF QUANTITIES

EQUIPMENT RENTAL	LABOR	MATERIALS					TOTAL COST	
		CREOSOTED PILES	CREOSOTED LUMBER	STEEL BEAMS	HARDWARE	MISC.		
COST	COST	COST	COST	COST	COST	COST		
TOTALS	612.25	1,018.30	1,341.60	882.14	1,100.00	86.19	10.15	5,050.63

CREO. PILING: 3 @ 50' - 150LF 16 @ 40' - 640LF 20 @ 16' - 320LF 1130LF	CREO. LUMBER: 4,924 BD. FT. UNTR. LUMBER: 162 BD. FT.	COMPLETE 34' I-BEAM SPAN 18" BEAMS & 2,40' X 18" I-BEAMS. (APPROX. 18,000LBS. STR. STEEL)
--	--	---

LOCATION
SEC. 19 & 20 SOLDIER TWP 85 41W
OVER SOLDIER RIVER

DESIGN FOR
122'-6" X 18" HIGH TRUSS BRIDGE
WITH 34' X 18' I BEAM APPROACH
SPAN ADDED TO SOUTH END.
PROJ. NO. ER-65(1) CRAWFORD COUNTY, IOWA
JUNE , 1962

2/2

13450 20/19/62
8-19-62
ES-65(1)
#130330