

STATE OF IOWA
 STATE HIGHWAY COMMISSION
 DESIGN FOR
 55'x20' PRE-STRESSED CONCRETE BEAM BRIDGE
 SECONDARY ROAD SYSTEM CO. PROJ. 58-2-B
 CRAWFORD COUNTY
 JANUARY 1958.

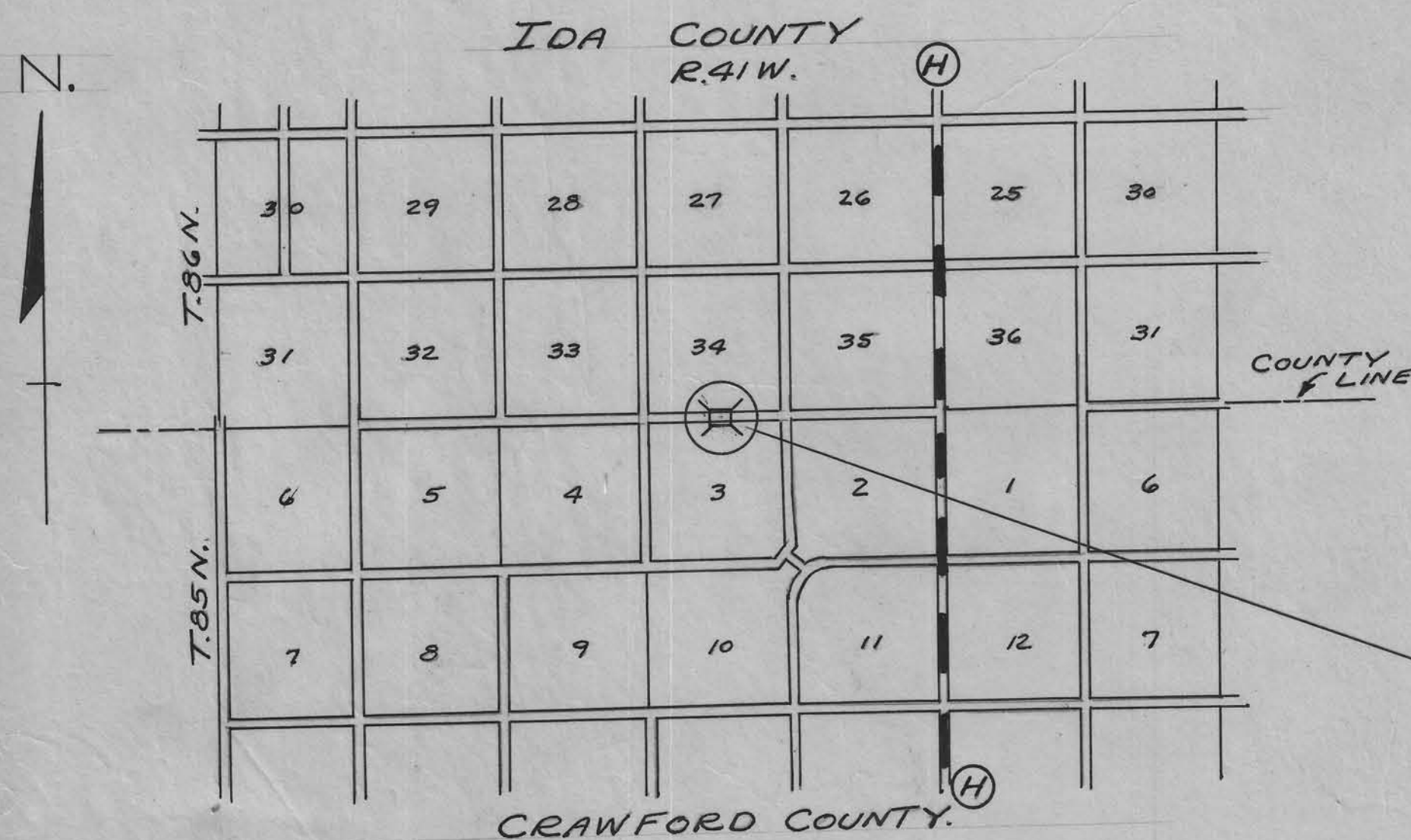
MILEAGE SUMMARY: =57'-0" = 0.01079 MILES.

SPECIFICATIONS:
 Design: A.A.S.H.O. Series of 1953.
 Construction: Standard Specifications of
 the Iowa State Highway Commission, Series
 of 1956, plus current Special Provisions
 except as noted.

DESIGN-2358 SOLDIER TWP. CRAWFORD COUNTY. Sec-3, STA. 27+04.5 OVER LOCAL CREEK 55'x20' PRESTRESSED CONCRETE BEAM BRIDGE					
DESCRIPTION.	ABUTMENTS		SUPERSTRUCT.		TOTAL
CONCRETE CLASS-"A"	12.60	C.Y.	28.90	C.Y.	41.50 C.Y.
REIN. STEEL	13.16	LBS.	6459	LBS.	7775 LBS.
STRUCT. STEEL	4596	"	1078	"	5674 "
PRE-STRESSED BEAMS.			5 @ 55'-0" (a)		5 @ 55'-0" (a)
HANDRAIL			130'-0" L.F.		130'-0" L.F.
WOOD RAIL POSTS 8"x6'			4		4
TREATED WOOD PILING	12 @ 45'	8 @ 30'			980 L.F.
TREATED LUMBER	6632	F.B.M.			6632 F.B.M.
GALVANIZED HARDWARE	180	LBS.	32		212 LBS.
EXCAVATION CLASS #20	403	C.Y.			403 C.Y.
" CLASS #10	320	C.Y.			320 C.Y.
" CLASS #21	11	C.Y.			11 C.Y.
REMOVAL OF OLD STRUCTURE					LUMP SUM.

* BEARING PILING TO BE OVERSIZE.

NOTE: Bridge Sign Assemblies Will be furnished &
 placed by Crawford County to conform with
 S & T Instruction No. 11, revised March-1, 1957.



APPROVED

BOARD OF SUPERVISORS DATE

APPROVED

CHIEF ENGINEER	DATE
IOWA HIGHWAY COMMISSION	

DEPARTMENT OF COMMERCE
 BUREAU OF PUBLIC ROADS.
 RECOMMENDED FOR APPROVAL

DISTRICT ENGINEER DATE

APPROVED

DIVISION ENGINEER DATE



GARFIELD TOWNSHIP
T.86N. R.41W.
IDA COUNTY
SEC.-34.

Cultivated.

24"x30' Corr. Metal
Pipe

Feed
Lot.
County to open New Inlet
Channel & Build Earth Dam.

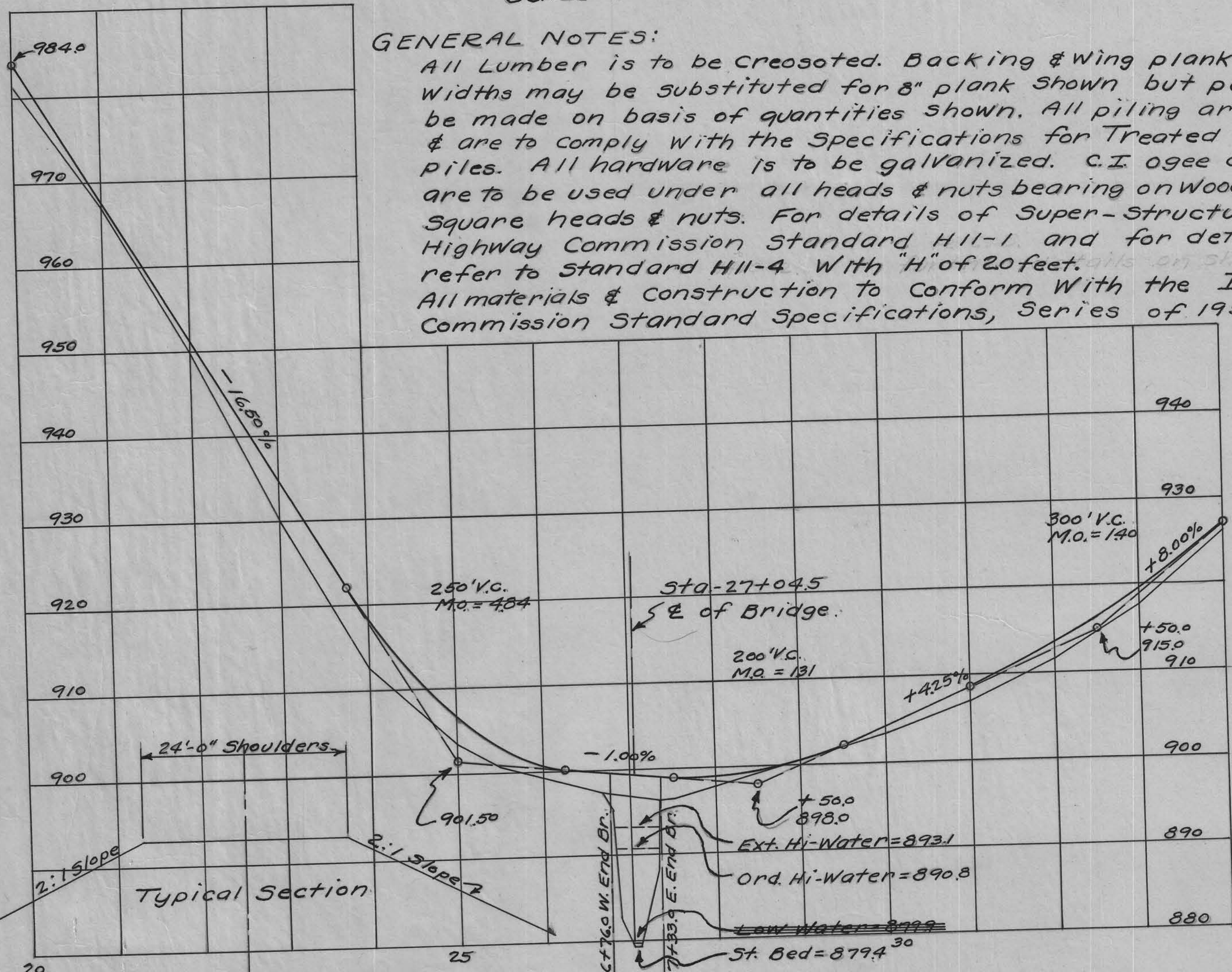
Sta. 27+00.5 E of 65'x16', 4-Span Wood
Bridge. Poor cond't. Wood Floor & Sub-
Structure. D.A. = 2.150 Ac. Replace with
55'x20' Pre-Stressed Conc. Beam Bridge,
Treated Wood Sub-Structure, Conc. Floor,
Type-B Steel Handrail. Bridge con-
tractor to remove Old Bridge and
pile within 300' of Bridge Site as
directed by the Engineer.

Pasture
SOLDIER TOWNSHIP
CRAWFORD COUNTY
T.85N. R.41W.
SEC.-3.

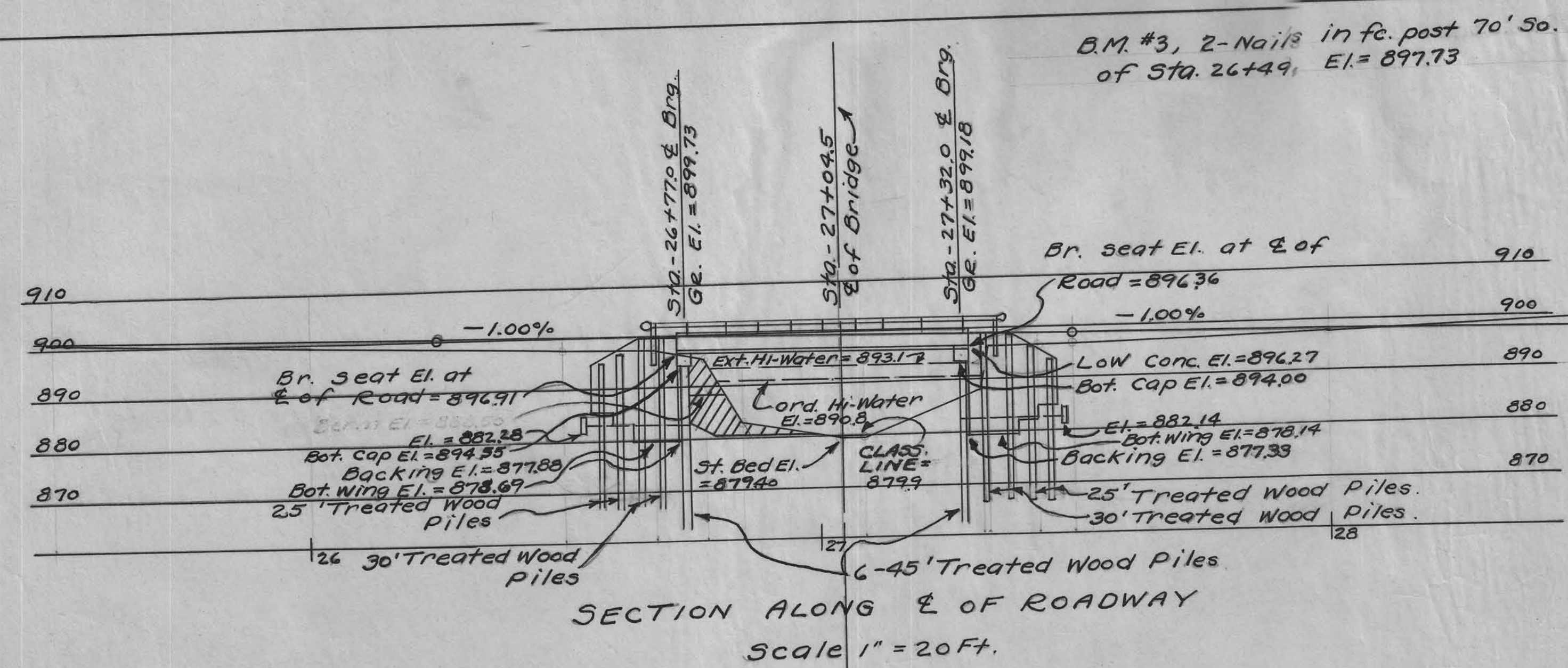
GENERAL PLAN
SCALE 1" = 100 FT.

GENERAL NOTES:

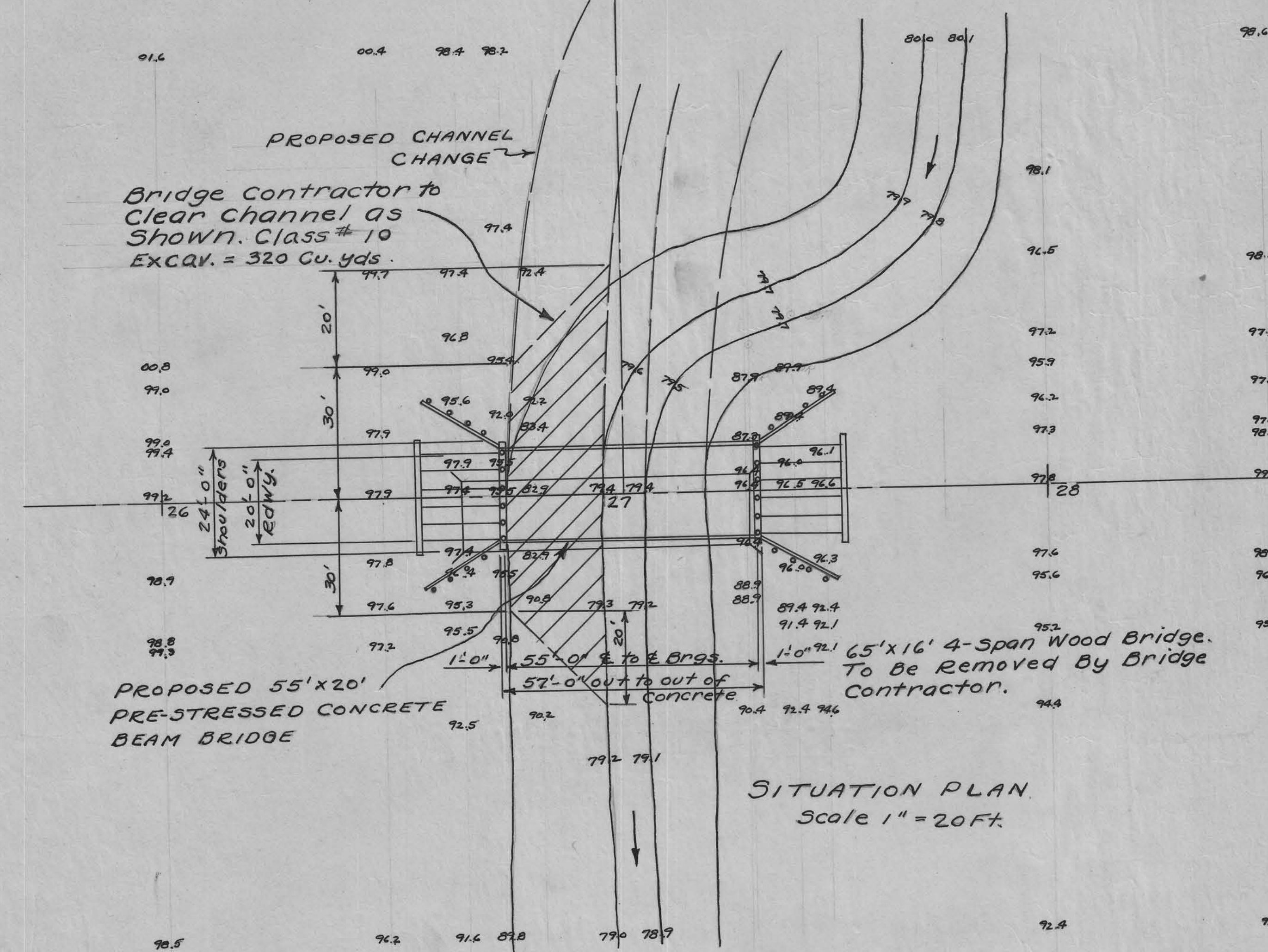
All Lumber is to be Creosoted. Backing & Wing plank in 10" & 12"
Widths may be substituted for 8" plank shown but payment will
be made on basis of quantities shown. All piling are to be creosoted
& are to comply with the Specifications for Treated Timber Trestle
piles. All hardware is to be galvanized. C.I. ogee or malleable Washers
are to be used under all heads & nuts bearing on wood. All bolts to have
Square heads & nuts. For details of Super-Structure refer to Iowa
Highway Commission Standard H11-1 and for details of Abutments
refer to Standard H11-4. With "H" of 20 feet. All on sheet #2 of these plans.
All materials & construction to conform with the Iowa Highway
Commission Standard Specifications, Series of 1956.



ROAD PROFILE
SCALE HORIZ: 1" = 100 FT.
VERT: 1" = 10 FT.



SECTION ALONG E OF ROADWAY
SCALE 1" = 20 FT.



SITUATION PLAN
SCALE 1" = 20 FT.

DESIGN FOR
55'x20' PRE-STRESSED CONCRETE BEAM BRIDGE
CONCRETE FLOOR - STEEL HANDRAIL, TYPE "B"
STA-27+04.50 PROJECT No.
CRAWFORD COUNTY, IOWA.

Location:
Section: 3
Soldier TWP.
T.85N. R.41W.

Sheet # 2 of 2