

STATE	FED. ROAD DIST. NO.	FISCAL YEAR	SHEET NO.	TOTAL SHEETS
IOWA	5	1978	1	4
PROJECT NUMBER				
L78-7				
R.O.W. PROJECT NUMBER				

IOWA
DEPARTMENT OF TRANSPORTATION
Highway Division

PLANS OF PROPOSED IMPROVEMENT ON THE

SECONDARY ROAD SYSTEM
CRAWFORD COUNTY

118'-4" x 24'-0" I-BEAM BRIDGE
(20° SKEW)
PROJECT NO. L78-7

SCALES: AS NOTED

THE STANDARD SPECIFICATIONS, SERIES OF 1977,
OF THE IOWA DEPARTMENT OF TRANSPORTATION,
SHALL APPLY TO CONSTRUCTION WORK ON THIS PROJECT

PLUS CURRENT SPECIAL PROVISIONS AND SUPPLEMENTAL SPECIFICATIONS

INDEX OF SHEETS

SHEET NO.	ITEM
1	TITLE SHEET, ESTIMATE OF QUANTITIES, LOCATION MAP, CONVENTIONAL SIGNS.
2	DESIGN SHEET
3	DESIGN SHEET
4	DESIGN SHEET

REMOVALS

50' X 16' PONY TRUSS BRIDGE
21' X 16' WOOD APPROACH
55' X 16' WOOD APPROACH
JETTY CONSISTING OF FOUR CAR BODIES AND WOOD PILING

PROJECT NO. L78-7		STA. 74+73.0			
SEC. 10-II		PARADISE TOWNSHIP			
118'-4" X 24'-0" I-BEAM BRIDGE (20° SKEW)					
ESTIMATE OF QUANTITIES					
ITEM NO.	ITEM	ABUTMENTS	PIERS	SUPERSTRUCTURE	TOTALS
1	CONCRETE, STRUCTURAL CLASS "C"	20.0 CU.YDS.	14.1 CU.YDS.	—	34.1 CU.YDS.
2	STEEL, REINFORCING	2560 LBS.	1462 LBS.	—	4022 LBS.
3	PILING, CREOSOTED 12@35'	420 L.F.	—	—	420 L.F.
4	PILING, STEEL H 10 BP 42 12@50'	—	600 L.F.	—	600 L.F.
5	PILING, CREOSOTED WING 4@20'	80 L.F.	—	—	80 L.F.
6	LUMBER, CREOSOTED	648 F.B.M.	—	14,672 FBM	15,320 FBM
7	EXCAV. CLASS 10 CHANNEL	—	—	—	6,040 CU.YDS.
8	EXCAV. CLASS 20	—	—	—	33 CU.YDS.
9	STEEL, STRUCTURAL	—	—	73,780 LBS.	73,780 LBS.
10	HANDRAIL, STEEL	—	—	242 L.F.	242 L.F.
11	CULVERT, CORR. METAL 30" DIA.	—	—	—	56.0 L.F.
12	CLEARING & GRUBBING	—	—	—	\$56.60
13	CONSTRUCTION OF JETTY (EACH)	—	—	—	12
14	REMOVALS	—	—	—	LUMP SUM

ITEM NO. 7

THE CONSTRUCTION OF WING DIKES (980 CU.YDS.), CHANNEL DIKES (3460 CU.YDS.), BERM (590 CU.YDS.), AND ROADWAY FILL (814 CU.YDS.) ARE TO BE CONSIDERED INCIDENTAL TO CLASS 10 CHANNEL EXCAVATION. 196 CU.YDS. OF CLASS 10 CHANNEL EXCAVATION TO BE WASTED IN OLD CHANNEL.

ITEM NO. 8

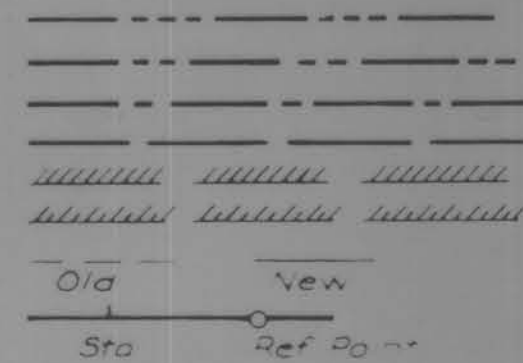
TOTAL INCLUDES 20 CU.YDS. OF CLASS 20 EXCAVATION FOR CORR. METAL LET DOWN PIPE CULVERT.

ITEM NO. 11

FOOTAGE INCLUDES 1-12° ELBOW FABRICATION ONLY, 16 GAGE.

CONVENTIONAL SIGNS

State Line
Co. Line
Twp. Line
Sec. Line
Corp. Line
Urban Bdry.
R.O.W. Lines
Survey Line



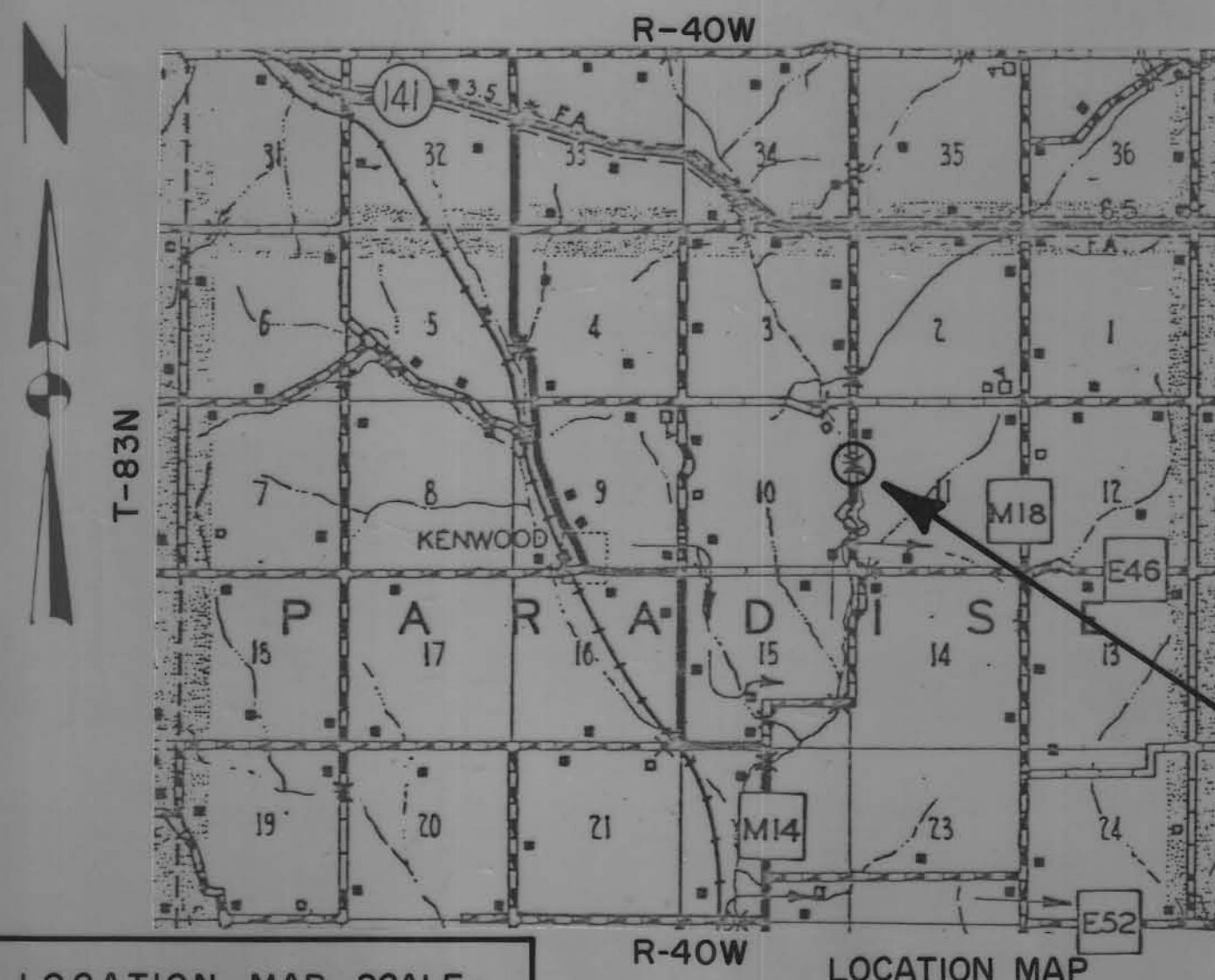
Sec. Corner
Profile Grade
Railroad
Field Tile
Underground Lines
Culverts
Utility Poles
Fence
Trees Or Brush
Stream
Dike
County Road No.
Township Road No.
Section Road No.
Rural Road No.

LETTING DATE
MAY 22, 1978

BRIDGE

CRAWFORD COUNTY

PROJECT NO. L78-7



NOTE: CRAWFORD COUNTY TO FURNISH ALL MATERIALS EXCEPT STRUCTURAL CONCRETE AND REINFORCING STEEL. STRUCTURAL STEEL DOES NOT INCLUDE HARDWARE.

IT SHALL BE THE CONTRACTOR'S RESPONSIBILITY TO PROVIDE WASTE AREAS OR DISPOSAL SITES FOR EXCESS MATERIAL WHICH IS NOT DESIRABLE TO BE INCORPORATED IN THE WORK INVOLVED ON THIS PROJECT. NO PAYMENT FOR OVERHAUL WILL BE ALLOWED FOR MATERIAL HAULED TO THESE SITES. USABLE MATERIAL SHALL BECOME THE PROPERTY OF CRAWFORD COUNTY.

CONTRACTOR MAY PLACE UP TO 200 CUBIC YARDS OF FILL MATERIAL BELOW ELEVATION 1197.8 IN ORDER TO CONSTRUCT A TEMPORARY STREAM CROSSING AND/OR ACCOMPLISH OTHER WORK NECESSARY TO COMPLETE CONSTRUCTION. ADDITIONAL FILL MATERIAL MAY BE PLACED ABOVE ELEVATION 1197.8 AS NECESSARY TO COMPLETE THE WORK.

34
STA. 74+73.0 BRIDGE
118'-4" X 24'-0" I-BEAM BRIDGE (20° SKEW)

APPROVED

Charles J. Smith

Ray H. Deen

LeRoy A. Hansohn

Louis J. Mullbauer

Martin Spiegel

BOARD OF SUPERVISORS

IOWA DEPARTMENT OF TRANSPORTATION
HIGHWAY DIVISION
AUTHORIZED FOR LETTING

DISTRICT LOCAL SYSTEMS ENGINEER DATE

I HEREBY CERTIFY THAT THIS PLAN WAS PREPARED UNDER MY SUPERVISION AND THAT ENGINEERING DECISIONS WITH REGARD TO THE DESIGN WERE MADE BY ME OR BY OTHER DULY REGISTERED PROFESSIONAL ENGINEERS UNDER THE LAWS OF THE STATE OF IOWA.

H. Dale Wright APRIL 24, 1978
IOWA REGISTRATION NUMBER 5798 DATE

DEPARTMENT OF TRANSPORTATION
IOWA
Highway Division
APPROVED
DEPUTY CHIEF ENGINEER DATE

U.S. DEPT. TRANSPORTATION
FEDERAL HIGHWAY ADMINISTRATION
APPROVED
DIVISION ENGINEER DATE

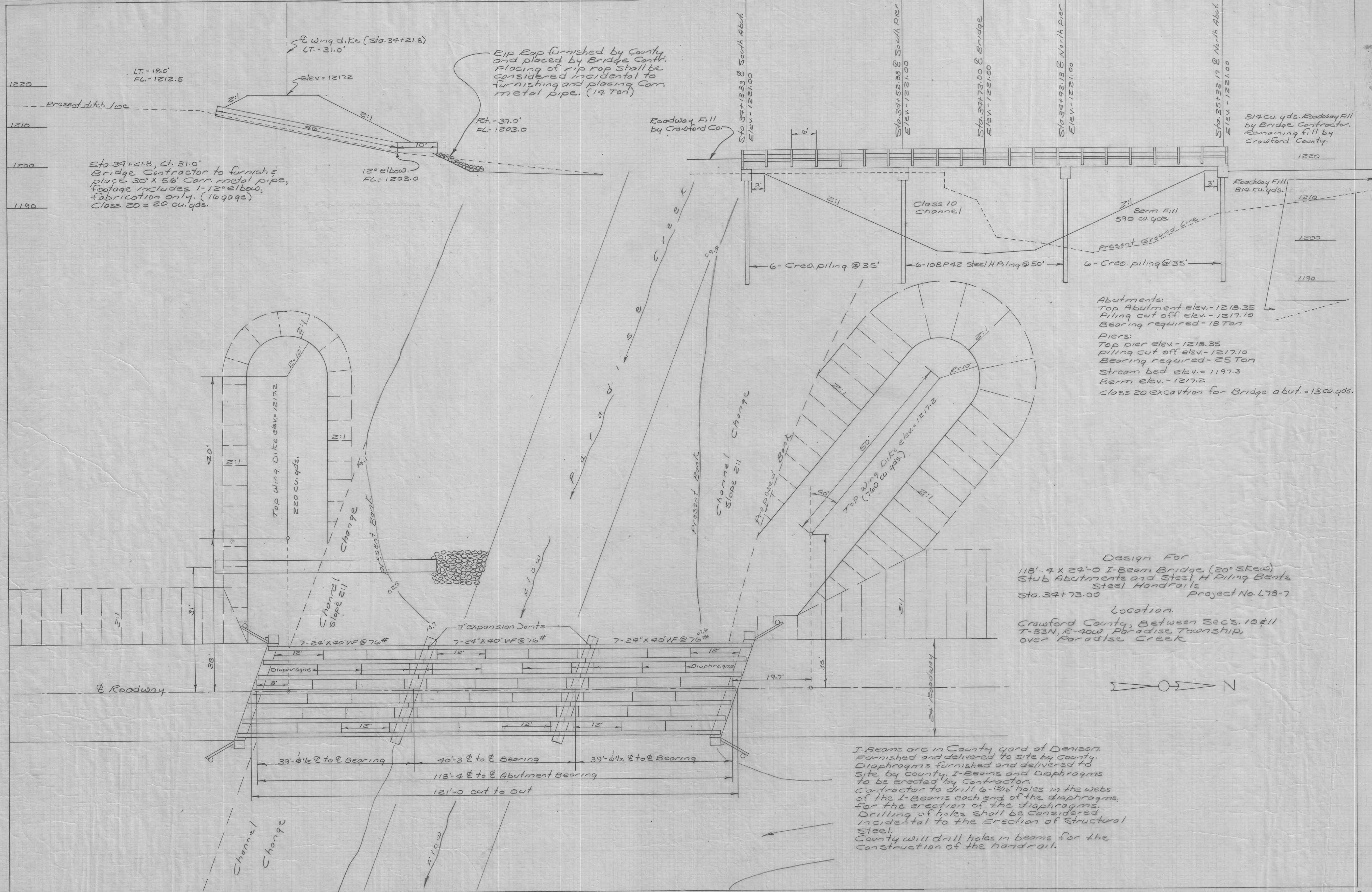
(1971) TRAFFIC COUNT 41 V.P.D.

LETTING DATE: MAY 22, 1978

CRAWFORD COUNTY

PROJECT NO. L78-7

SHEET NO. 1 of 4



Sta. 34+21.8, Lt. 31.0'
 Bridge Contractor to furnish & place 30" x 56' Corr. metal pipe, footage includes 1-12° elbow, fabrication only. (1699qds.)
 Class 20 = 20 cu. yds.

EIP Cap furnished by County and placed by Bridge Contr. Placing of rip rap shall be considered incidental to furnishing and placing Corr. metal pipe. (14 Ton)

Roadway Fill by Crawford Co.

814 cu. yds. Roadway Fill by Bridge Contractor. Remaining fill by Crawford County.

Abutments:
 Top Abutment elev. - 1218.35
 Piling cut off elev. - 1217.10
 Bearing required - 18 Ton

Piers:
 Top Pier elev. - 1218.35
 Piling cut off elev. - 1217.10
 Bearing required - 25 Ton
 Stream bed elev. = 1197.3
 Berm elev. - 1217.2
 Class 20 excavation for Bridge abut. = 13 cu. yds.

Design For
 118'-4" x 24'-0" I-Beam Bridge (20° Skew)
 Stub Abutments and Steel H Piling Bents
 Steel Handrails
 Sta. 34+73.00 Project No. L78-7

Location
 Crawford County, Between Sec's 10 & 11
 T-83N, R-40W Paradise Township,
 over Paradise Creek

I-Beams are in County yard of Denison. Furnished and delivered to site by county. Diaphragms furnished and delivered to site by county. I-Beams and Diaphragms to be erected by Contractor. Contractor to drill 6-13/16" holes in the webs of the I-Beams each end of the diaphragms, for the erection of the diaphragms. Drilling of holes shall be considered incidental to the erection of structural steel. County will drill holes in beams for the construction of the handrail.

