

STATE	FED. ROAD DIST. NO.	FISCAL YEAR	SHEET NO.	TOTAL SHEETS
IOWA	8	1975	1	3
PROJECT NUMBER				
L 76-3				
R.O.W. PROJECT NUMBER				

IOWA
DEPARTMENT OF TRANSPORTATION
Highway Division

PLANS OF PROPOSED IMPROVEMENT ON THE
SECONDARY ROAD SYSTEM
IDA & CRAWFORD COUNTIES
60'-8" x 24'-0" I-BEAM BRIDGE
PROJECT NO. L76-3

SCALES AS NOTED

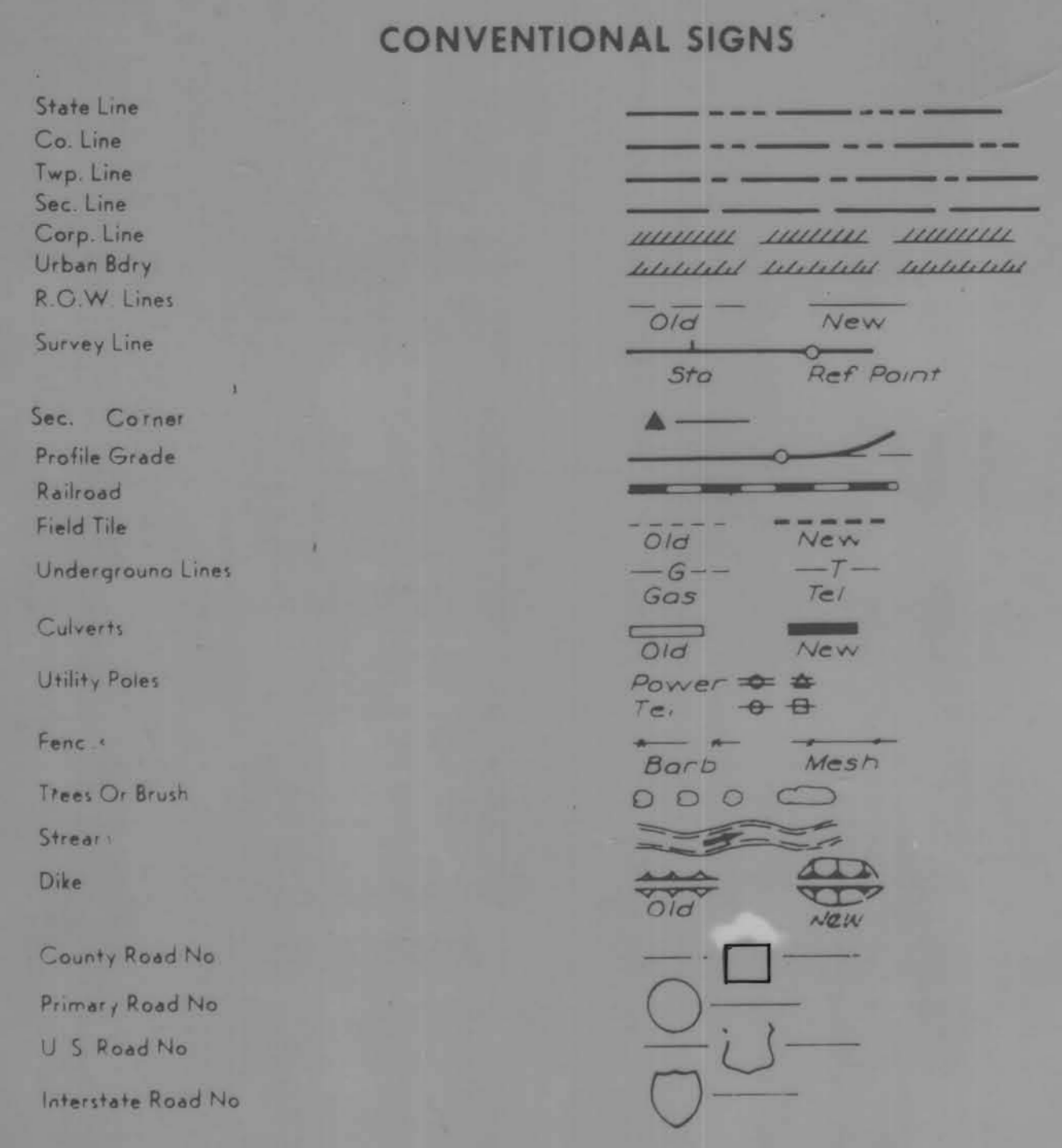
IOWA STATE HIGHWAY COMMISSION STANDARD SPECIFICATIONS SERIES 1972 PLUS CURRENT SPECIAL PROVISIONS AND SUPPLEMENTAL SPECIFICATIONS OF THE IOWA DEPARTMENT OF TRANSPORTATION--HIGHWAY DIVISION SHALL APPLY TO WORK ON THIS PROJECT.

INDEX OF SHEET

SHEET NO.	ITEM
1	TITLE SHEET, ESTIMATE OF QUANTITIES, MILEAGE SUMMARY, LOCATION MAP, AND CONVENTIONAL SIGNS.
2	PLAN AND PROFILE SHEET
3	DETAILS

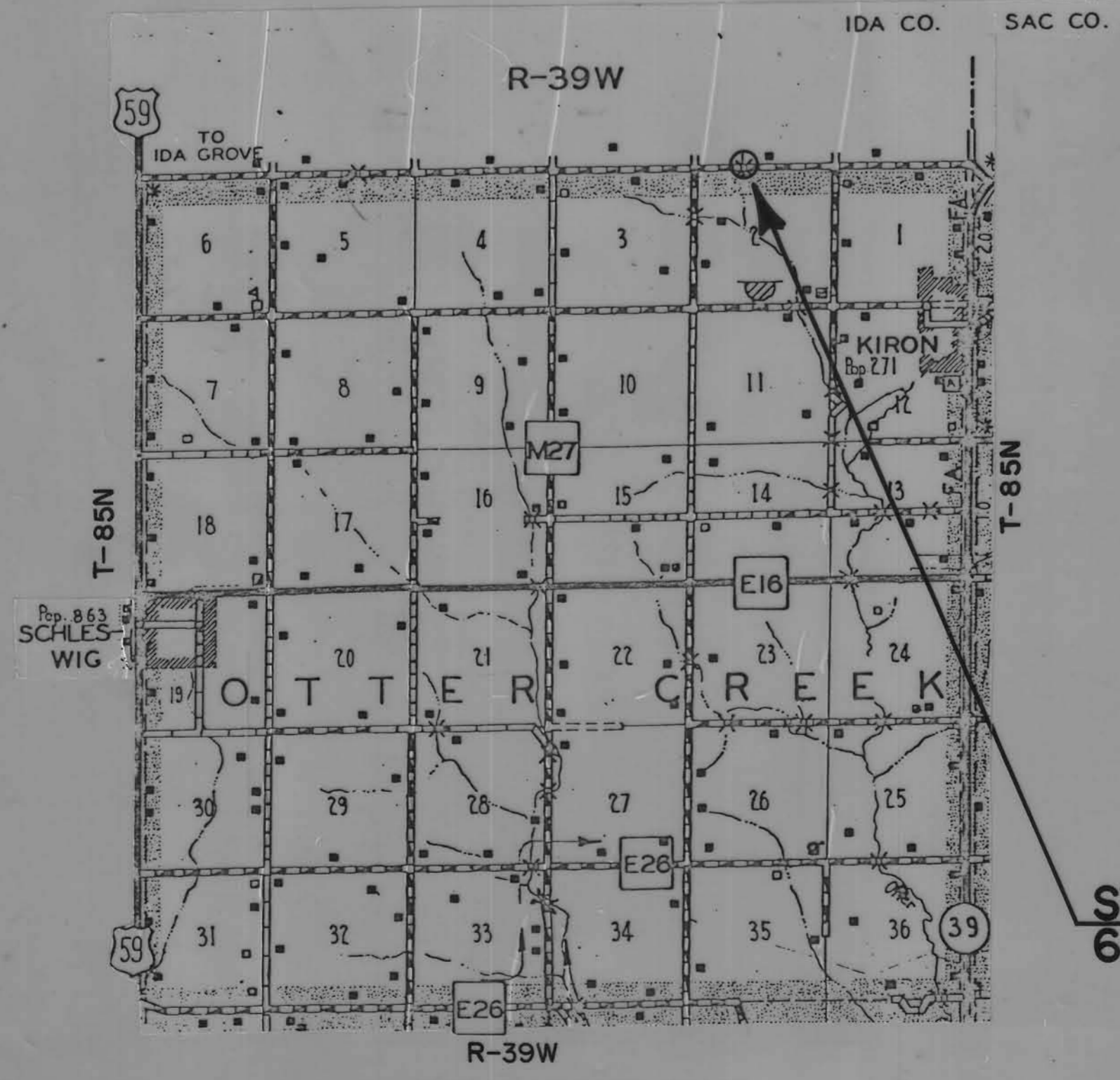
MILEAGE SUMMARY

60'-8" = 0.01149 MILE



PROJECT NO. L76-3		STA. 18+35.34				
NORTH LINE SEC. 2		OTTER CREEK TWP.				
60'-8" X 24'-0" I-BEAM BRIDGE						
ITEM NO.	ITEM	UNIT	ESTIMATE OF QUANTITIES			TOTAL
			ABUTMENTS	PIERS	SUPERSTRUCTURE	
1	CREOSOTED PILING 26 @ 35'	L.F.	595 L.F.	315 L.F.	---	910 L.F.
2	CREOSOTED WING PILING 4 @ 20'	L.F.	80 L.F.	---	---	80 L.F.
3	CREOSOTED LUMBER	FBM	1764 FBM	---	7056 FBM	8820 FBM
4	EXCAV. CLASS 10 CHANNEL	CU.YDS.	---	---	---	4168 CU.YDS.
5	EXCAV. CLASS 20	CU.YDS.	91 CU.YDS.	---	---	91 CU.YDS.
6	STRUCTURAL STEEL	LBS.	3,783 LBS.	---	44,312 LBS.	48,095 LBS.
7	STEEL HANDRAIL	LIN.FT.	---	---	124 LIN.FT.	124 LIN.FT.
8	REMOVALS	LUMP SUM	---	---	---	LUMP SUM

NOTE: CRAWFORD COUNTY TO FURNISH ALL MATERIALS.
STRUCTURAL STEEL DOES NOT INCLUDE HARDWARE OR 6" X 6" STEEL ANGLES.



STA. 18+35.34 @ BRIDGE
60'-8" X 24'-0" I-BEAM BRIDGE

(1971) TRAFFIC COUNT 46 V.P.D.

APPROVED
Donald R. Shaw
1-26-76
IDA COUNTY ENGINEER DATE

Thomas C. Chapman

Emmitt Sahl

Elvin E. Leonard
BOARD OF SUPERVISORS
IDA COUNTY

APPROVED
Eileen Seider

Charles J. Smith

LeRoy A. Hansohn

Don H. Juran

Gene Kueser
BOARD OF SUPERVISORS
CRAWFORD COUNTY

DISTRICT PLANNING ENGINEER
IOWA DEPT. OF TRANSPORTATION
HIGHWAY DIVISION
APPROVED *Thomas E. DeWitte* DATE 12-23-75

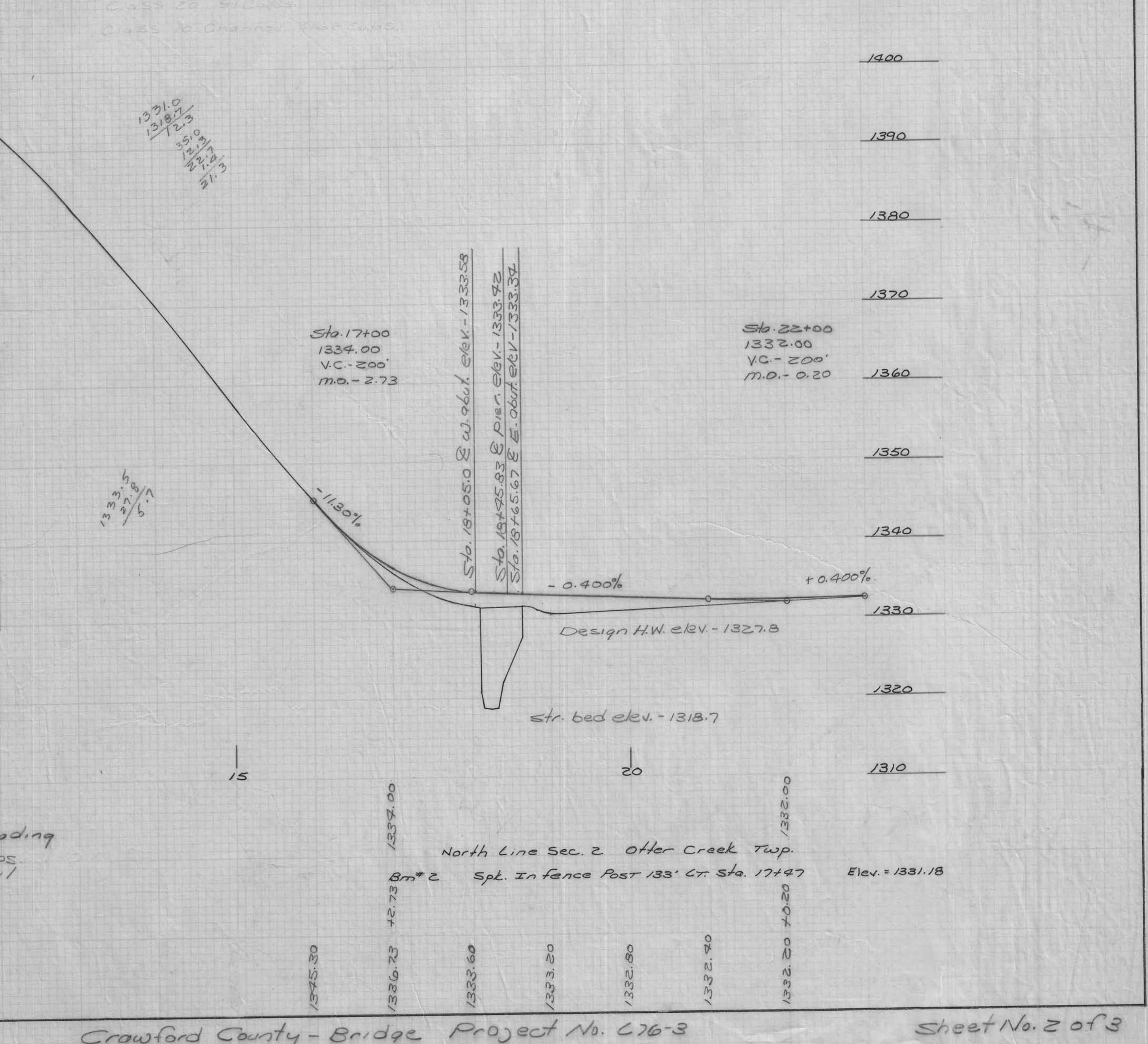
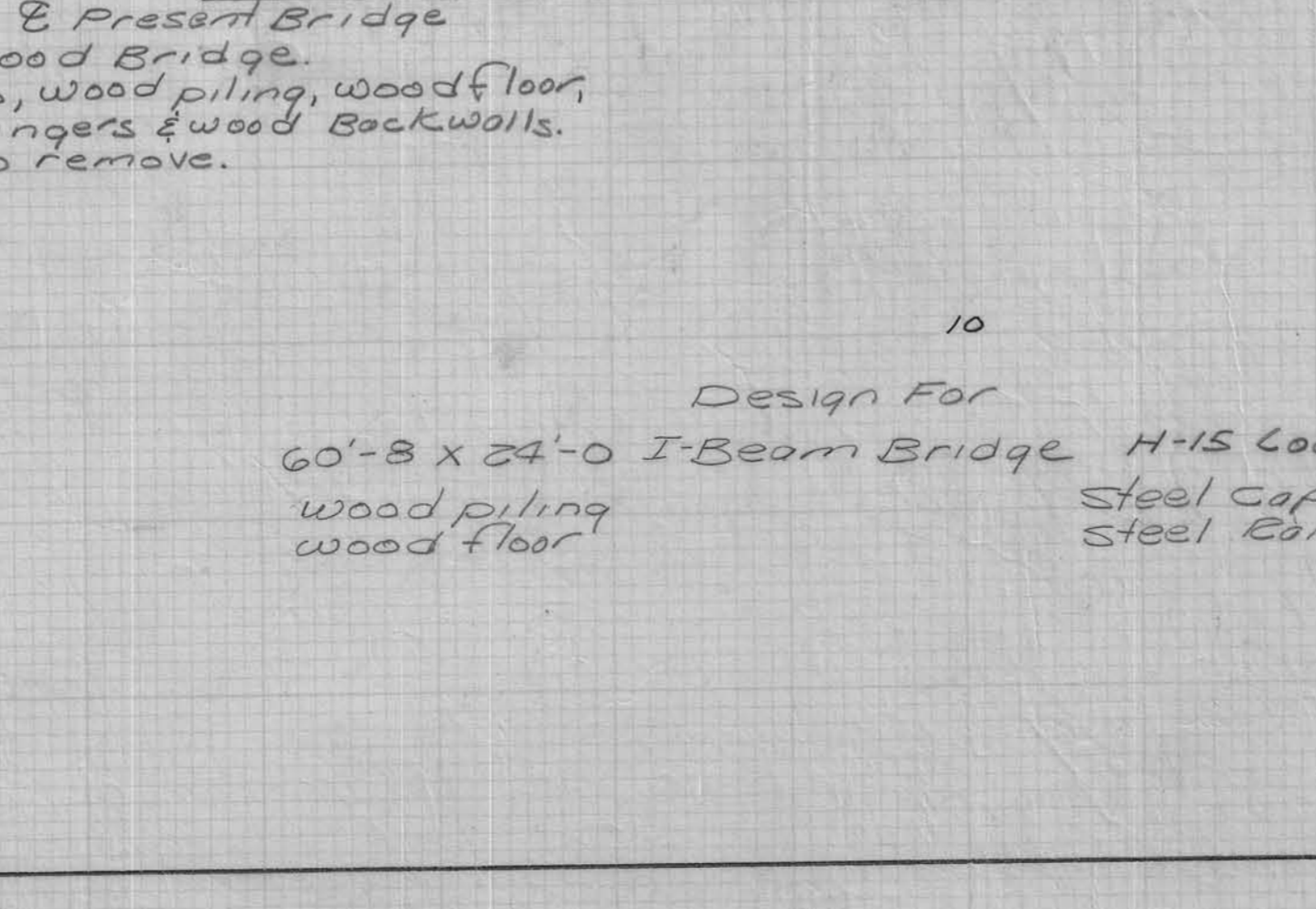
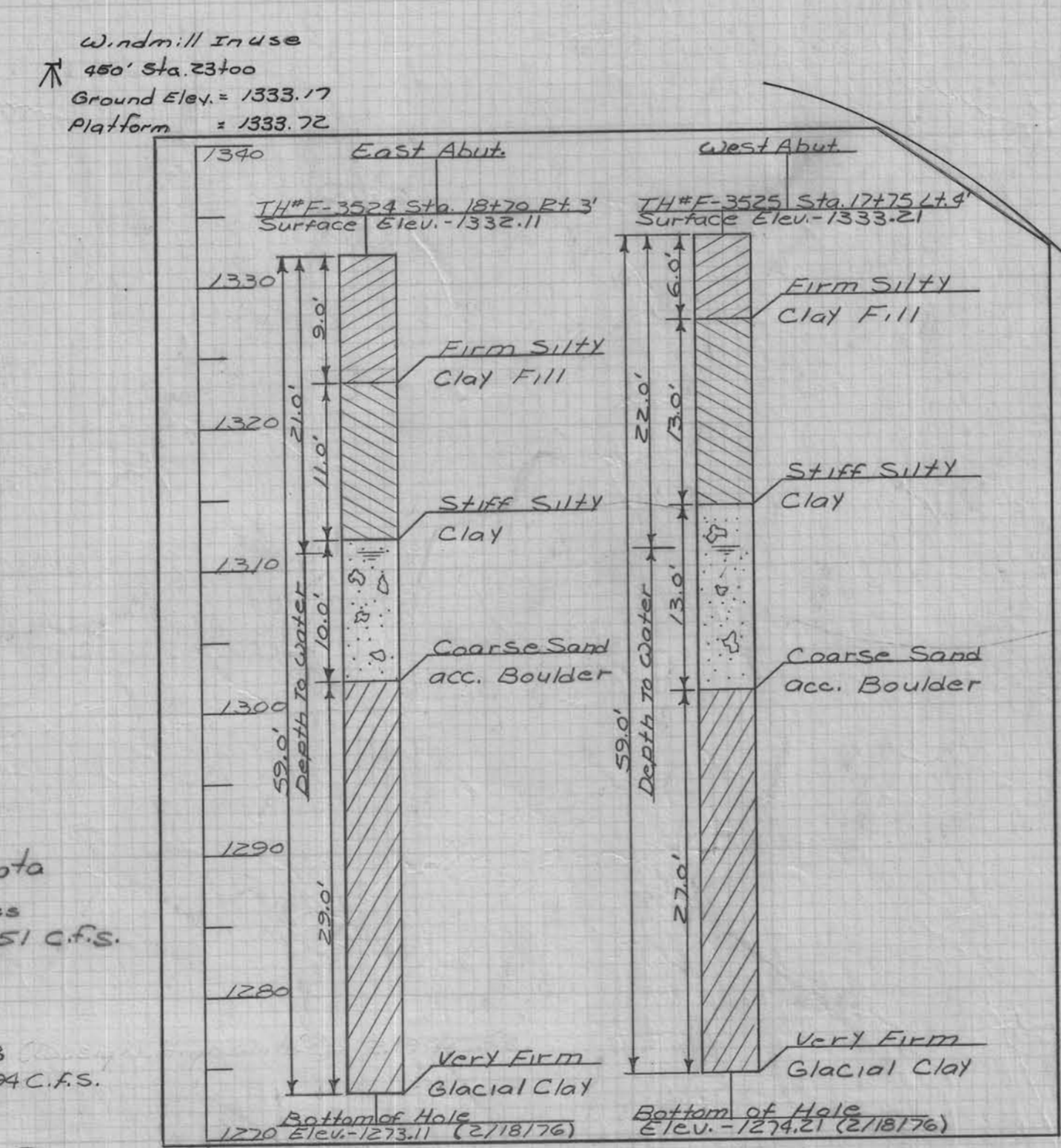
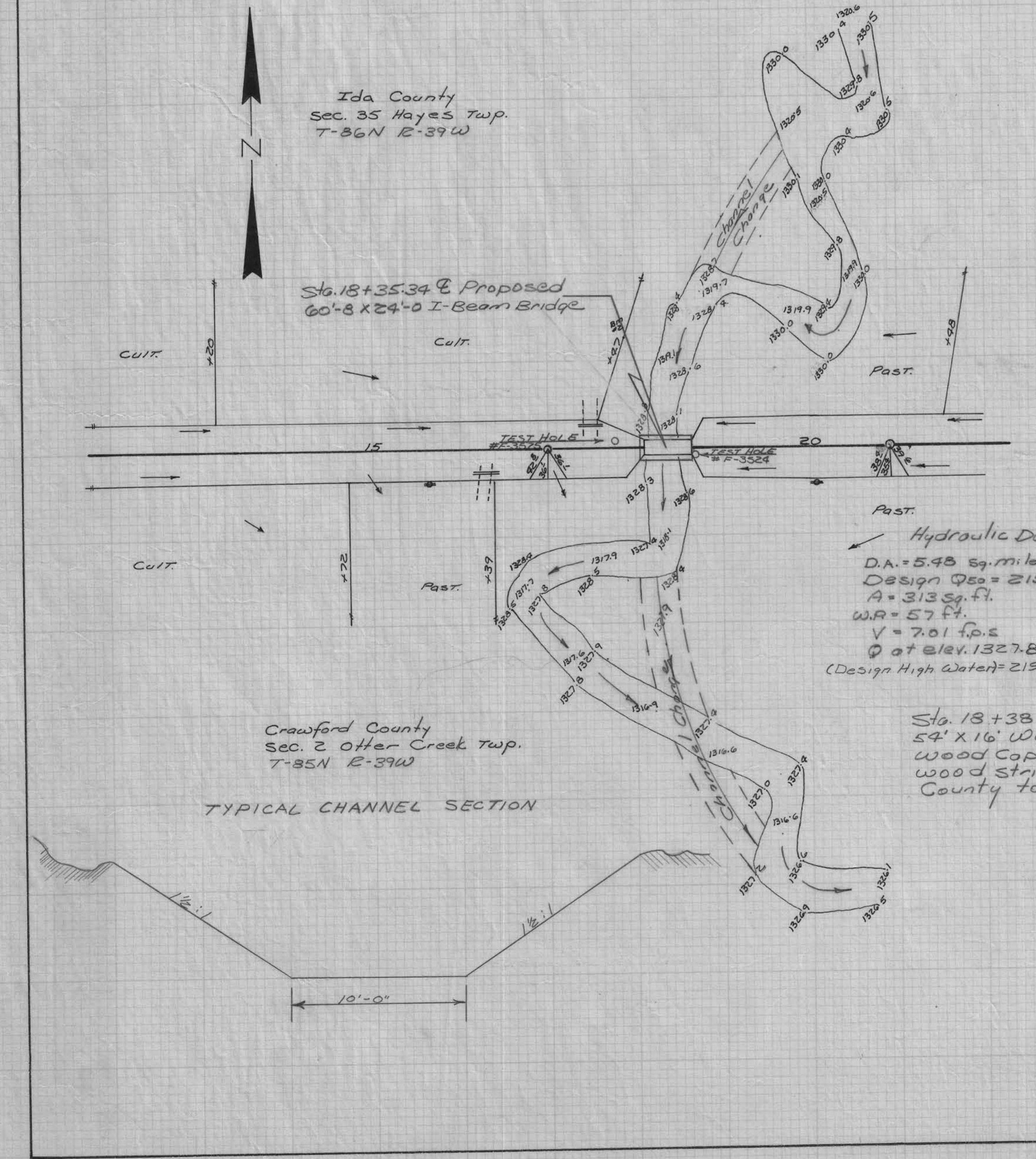
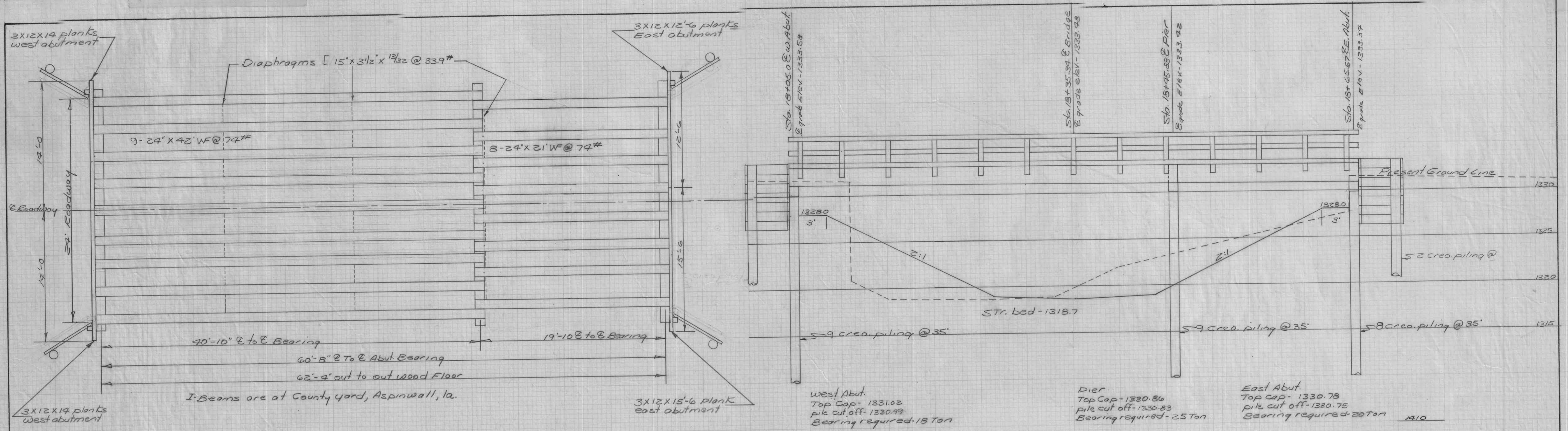
I HEREBY CERTIFY THAT THIS PLAN WAS PREPARED UNDER MY SUPERVISION AND THAT ENGINEERING DECISIONS WITH REGARD TO THE DESIGN WERE MADE BY ME OR BY OTHER DULY REGISTERED PROFESSIONAL ENGINEERS UNDER THE LAWS OF THE STATE OF IOWA.
H. Dale Wright DEC 22, 1975
IOWA REGISTRATION NUMBER 5798 DATE

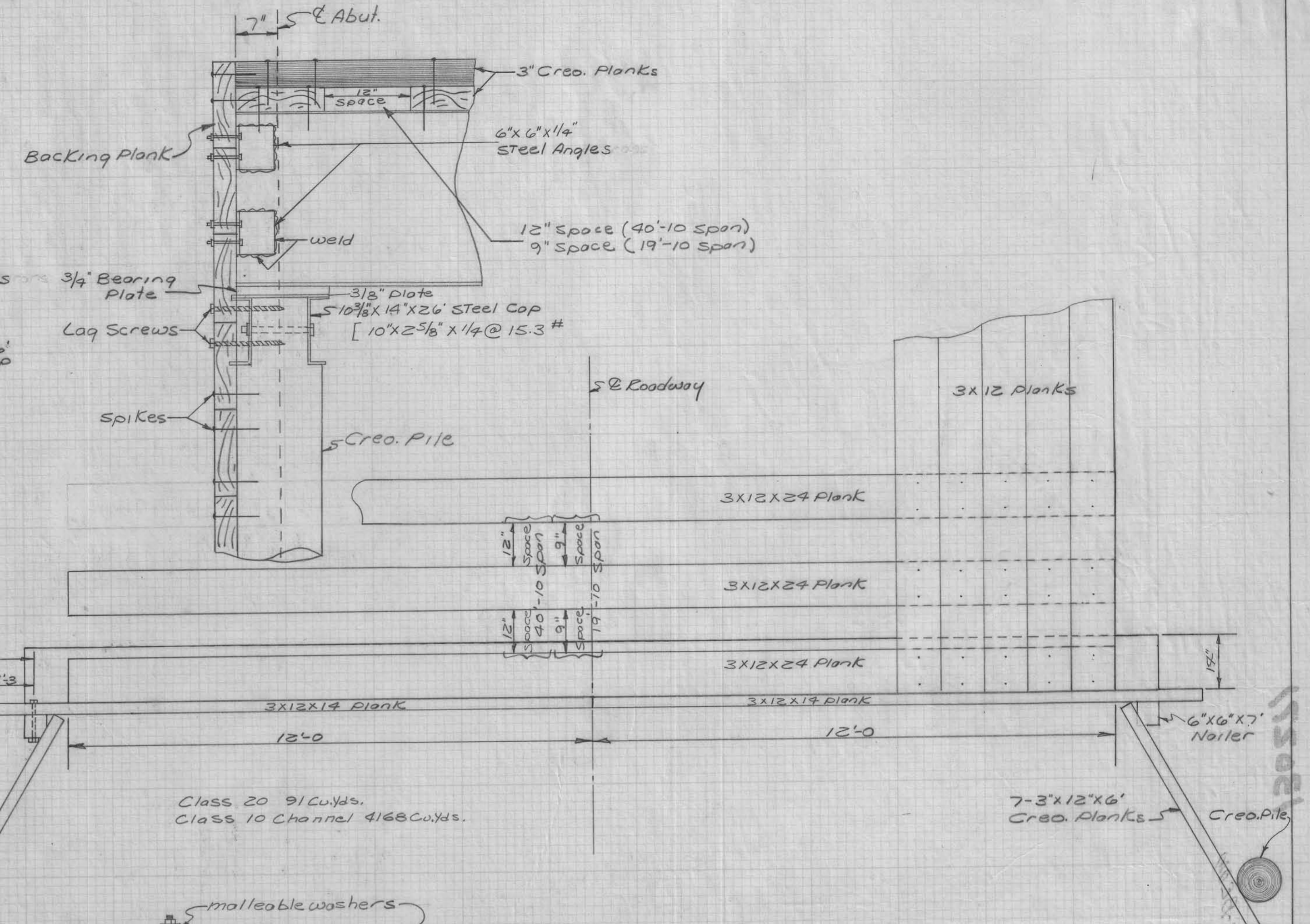
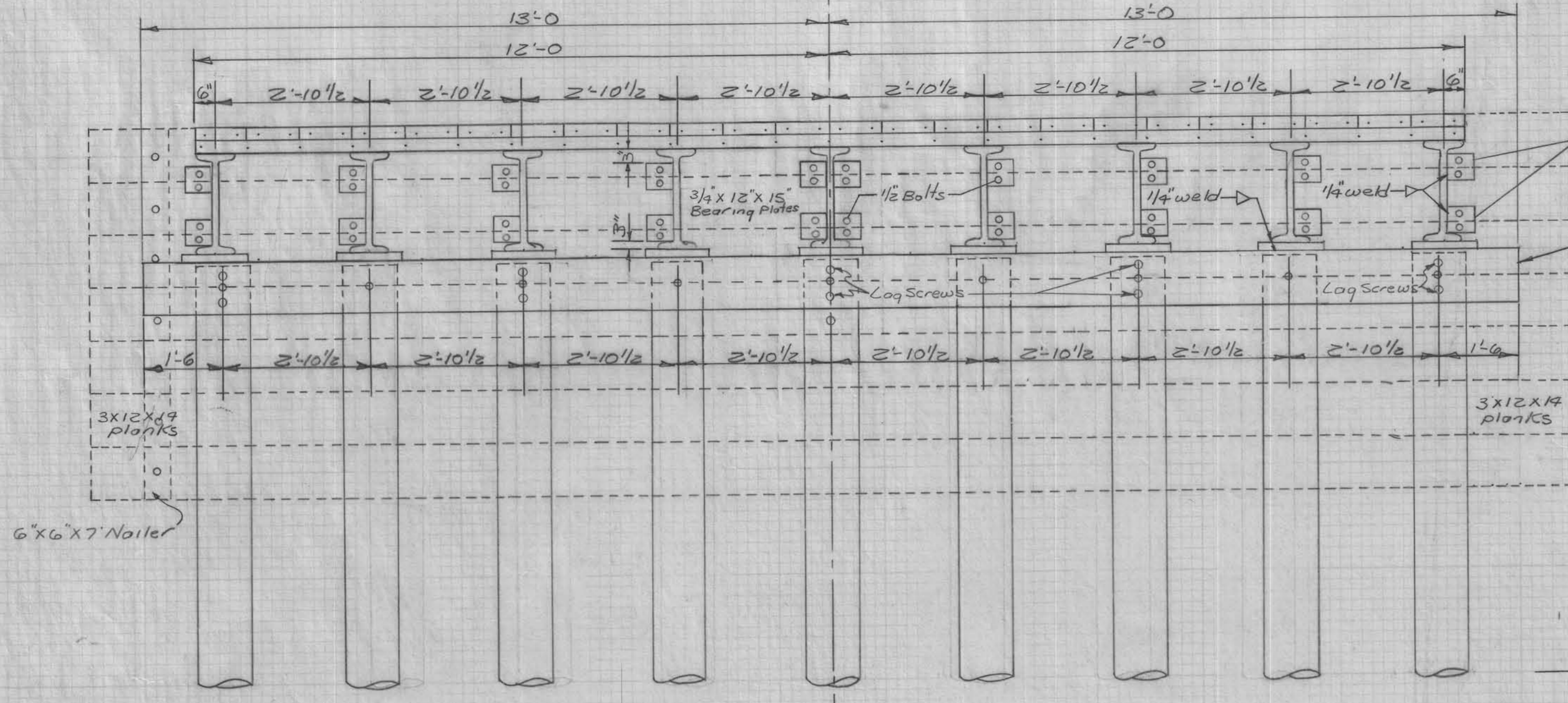
DEPARTMENT OF TRANSPORTATION
Highway Division
IOWA
APPROVED
DEPUTY CHIEF ENGINEER DATE

CRAWFORD COUNTY, IDA COUNTY

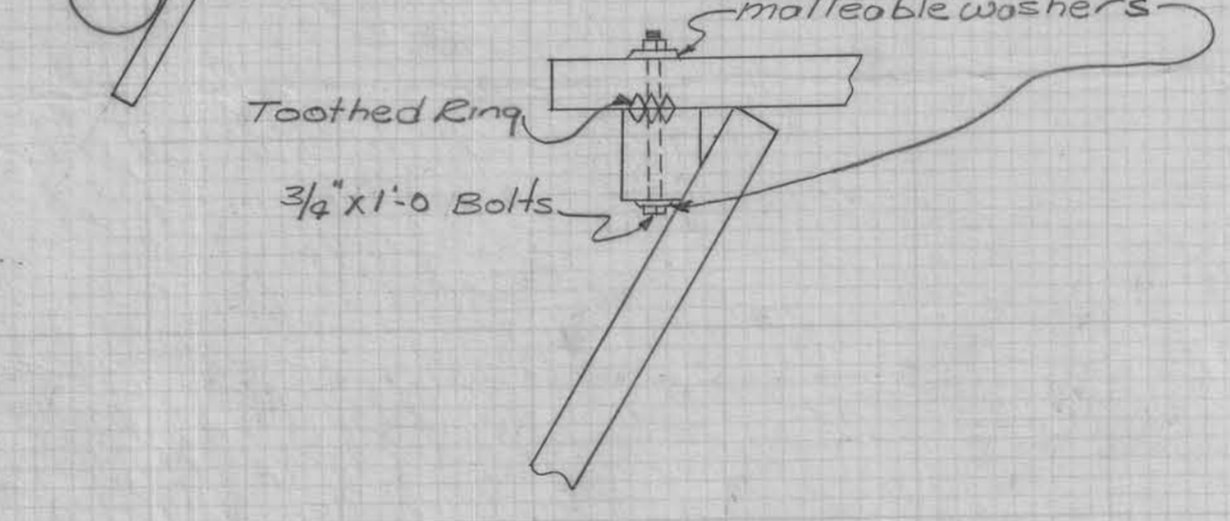
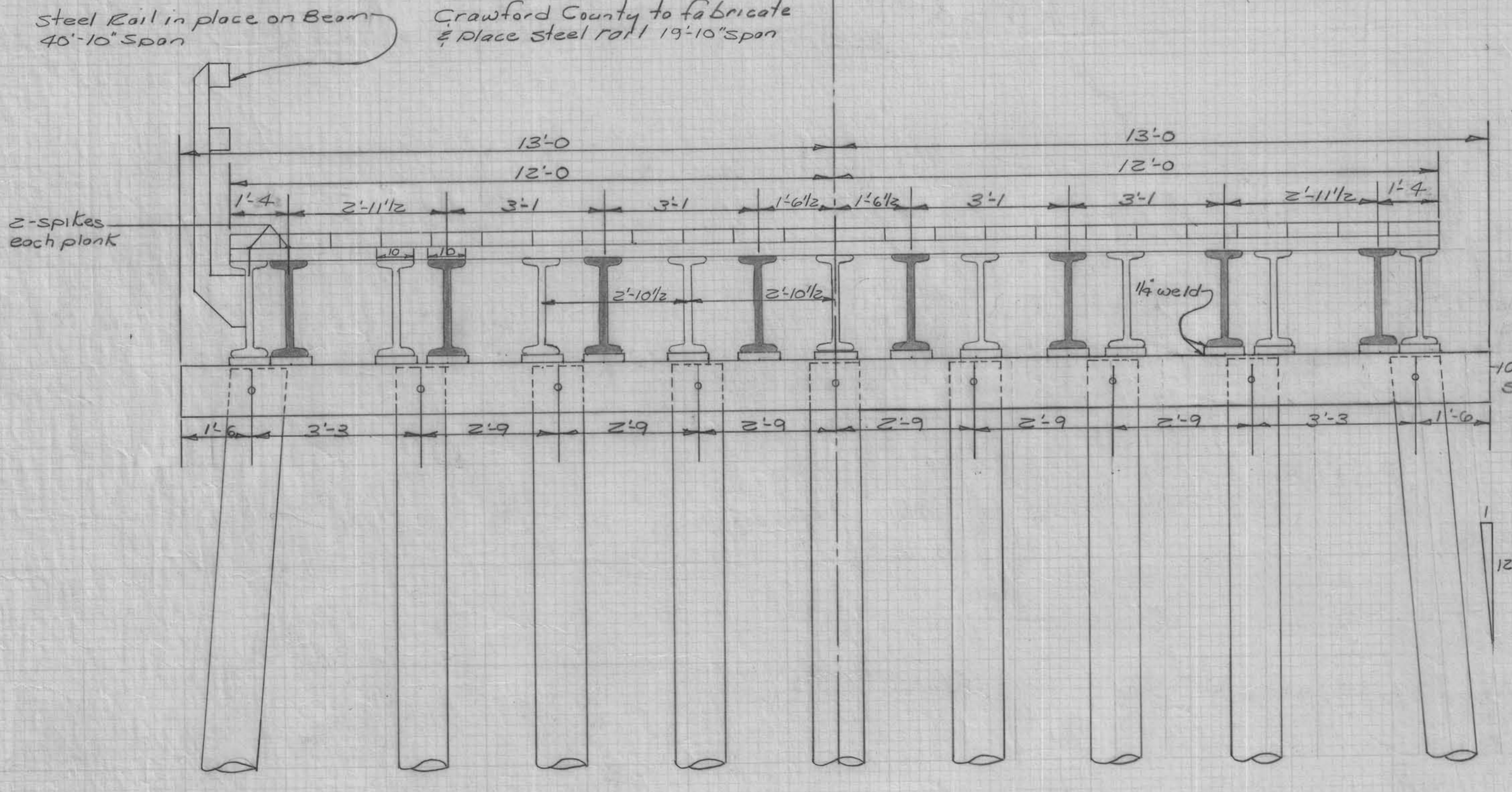
LETTING DATE

I-Beam Bridge
Proj. No. L-76-3
N. Line Sec. 2 Otter Creek

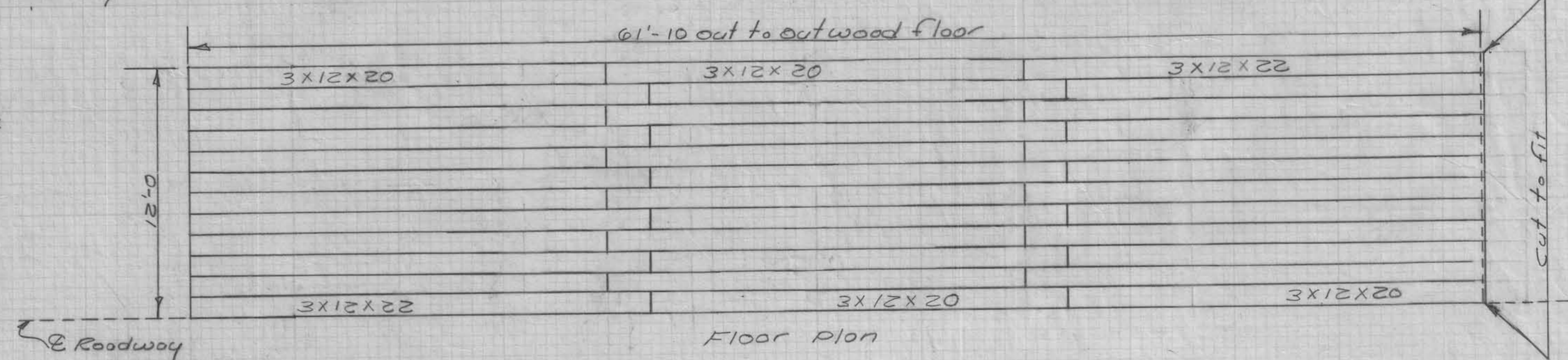




West Abutment Details Sta. 18+05.0
 East Abutment same except beam & pile spacing,
 and Backing Plank lengths. For beam spacing see
 pier detail, make pile spacing same as beam spacing.
 For Backing plank lengths see sheet No. 2.



Creosoted Lumber			
Item	No.	Linear Feet	Board Feet
Floor Plank 3x12x24	36	864.0	2592
Floor Plank 3x12x22	24	528.0	1584
Floor Plank 3x12x20	48	960.0	2880
Backing Plank 3x12x15-6	7	108.5	325
Backing Plank 3x12x19	14	196.0	588
Backing Plank 3x12x12-6	7	87.5	263
Wing Plank 3x12x6	28	168.0	504
Nailer 6x6x7	4	28.0	84
Total Board Feet			8820



Structural Steel		
Item	No.	Weight (lbs.)
24'x42' WF @ 74# I-Beams	9	27,972
24'x21' WF @ 74# I-Beams	8	12,432
Steel Diaphragms @ 40#	23	2,693
Steel Caps @ 48.5	3	3,783
Bearing Plates	34	1,215
Total Weight, lbs.		48,095

Pier Details

Design For
 60'-8x24'-0 I-Beam Bridge H-15 Loading
 wood piling
 steel caps
 steel rail
 H-15 Loading

Description of Work: Replace 3" bottom deck with 4"x16" bottom deck.

For the month of: June	FHWA No: 130271 Bridge Type:
---------------------------	---

Employee	Hours worked per day																															Total Hours	Hourly Rate	Totals			
	1	2	3	4	5	6	7	8	9	10	11	12	13	14	15	16	17	18	19	20	21	22	23	24	25	26	27	28	29	30	31						
Terry Lally					5	8																												13	\$ 36.58	\$475.54	
Dan Blunk					5	8																												13	\$ 33.49	\$435.37	
Howard Clark					5	8																												13	\$ 28.40	\$369.20	
Blake Deiber					5	8																												13	\$ 25.46	\$330.98	
Joe Blum					5	8																												13	\$ 13.48	\$175.24	
Tim Petersen					5	8																												13	\$ 10.27	\$133.51	
																																		0	\$ -	\$0.00	
																																		0	\$ -	\$0.00	
																																		0	\$ -	\$0.00	
																																			0	\$ -	\$0.00
																																			0	\$ -	\$0.00
																																			0	\$ -	\$0.00

Labor Cost: \$1,919.84

Equipment	Hours worked per day																															Total Hours	Hourly Rate	Totals			
	1	2	3	4	5	6	7	8	9	10	11	12	13	14	15	16	17	18	19	20	21	22	23	24	25	26	27	28	29	30	31						
#83 Cat Excavater					5	5																												10	\$ 67.19	\$671.90	
#73 Link Belt Crane																																		0	\$ 98.33	\$0.00	
#103 Tele-Crane																																		0	\$ 89.06	\$0.00	
#75 IH Dozer																																		0	\$ 42.05	\$0.00	
#59 J. D. Dozer																																		0	\$ 26.81	\$0.00	
#32 J.D. crawler																																		0	\$ 28.29	\$0.00	
#97 air comp.																																		0	\$ 10.00	\$0.00	
#63 Welder																																		0	\$ 10.00	\$0.00	
#18 Tool Truck					2	2																												4	\$ 6.94	\$27.76	
																																		0	\$ -	\$0.00	
																																			0	\$ -	\$0.00
																																			0	\$ -	\$0.00

Equipment Costs: \$699.66

No. of pieces	Size	Materials List Description of materials used	Sockpile location or purchased from	New/ Used	No. Units	* Units	Unit Cost	Total Costs		
									Total Labor Costs: \$1,919.84	
25	4"x16"	24' plank	stock	used	600	ln.ft.	\$ 3.00	\$ 1,800.00	Materials (page 1):	\$ 1,951.60
40	lbs.	#60 ring shank			40	lb.	\$ 1.04	\$ 41.60	Materials (page 2):	\$ -
100	4"	plank clips	Frehse mfg.		100	each	\$ 1.10	\$ 110.00		
					0		\$ -	\$ -		
					0		\$ -	\$ -	Total Material Cost: \$1,951.60	
					0		\$ -	\$ -		
					0		\$ -	\$ -	Equipment Costs: \$699.66	
					0		\$ -	\$ -		
					0		\$ -	\$ -		
									Total Costs:	\$4,571.10
Material Costs (page 1):									\$ 1,951.60	