

STATE OF IOWA
 STATE HIGHWAY COMMISSION
 DESIGN FOR

TWO 30'X20' CONCRETE SLAB BRIDGES
 ONE 42'-6"X20' PRE-STRESSED CONCRETE BEAM BRIDGE

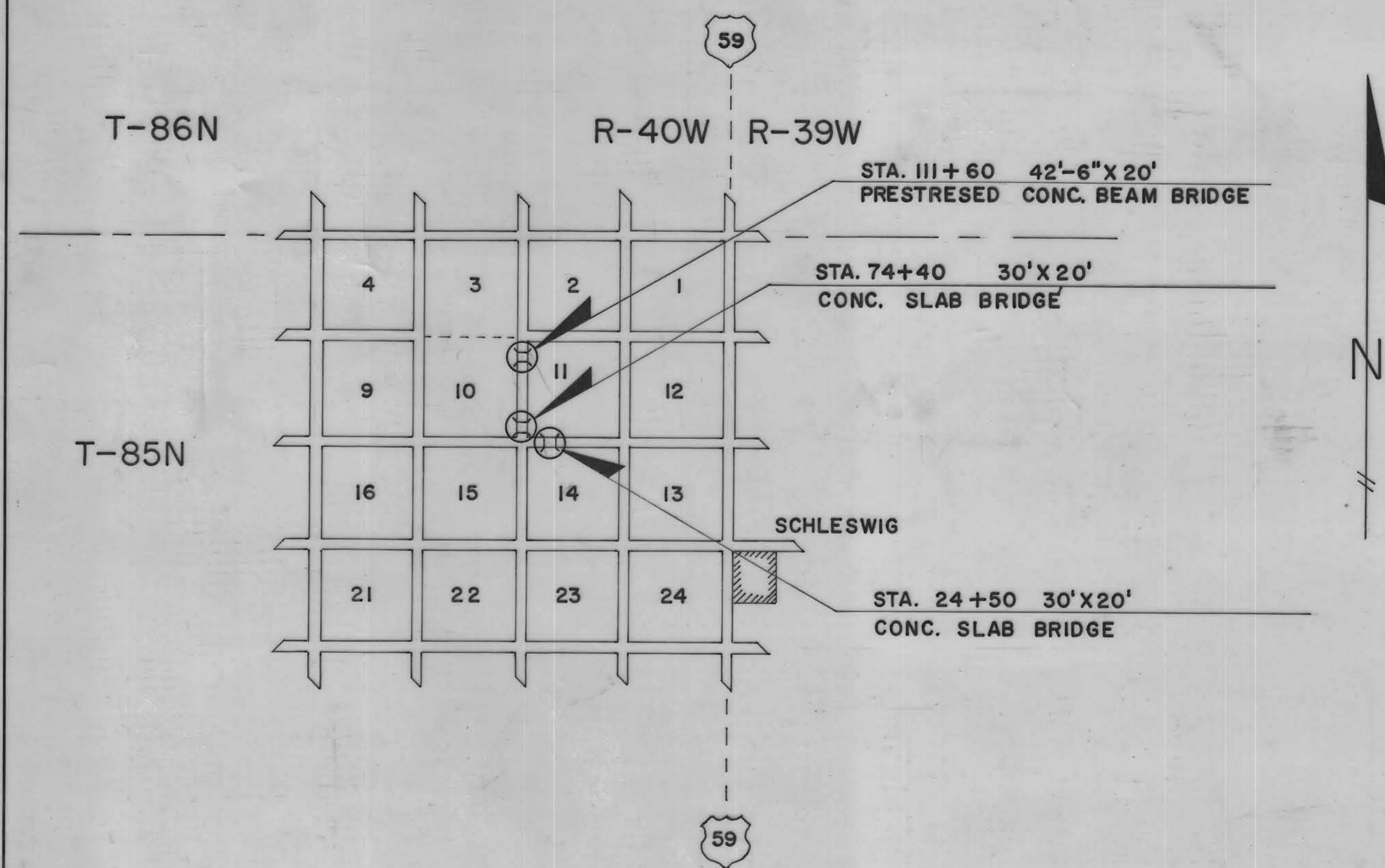
SECONDARY ROAD SYSTEM
 CRAWFORD COUNTY

JANUARY, 1962

PROJ. 62-32

SPECIFICATIONS:

DESIGN: A.A.S.H.O. SERIES OF 1957.
 CONSTRUCTION: STANDARD SPECIFICATIONS
 OF THE IOWA STATE HIGHWAY COMMISSION,
 SERIES OF 1960, PLUS CURRENT SPECIAL
 PROVISIONS EXCEPT AS NOTED.

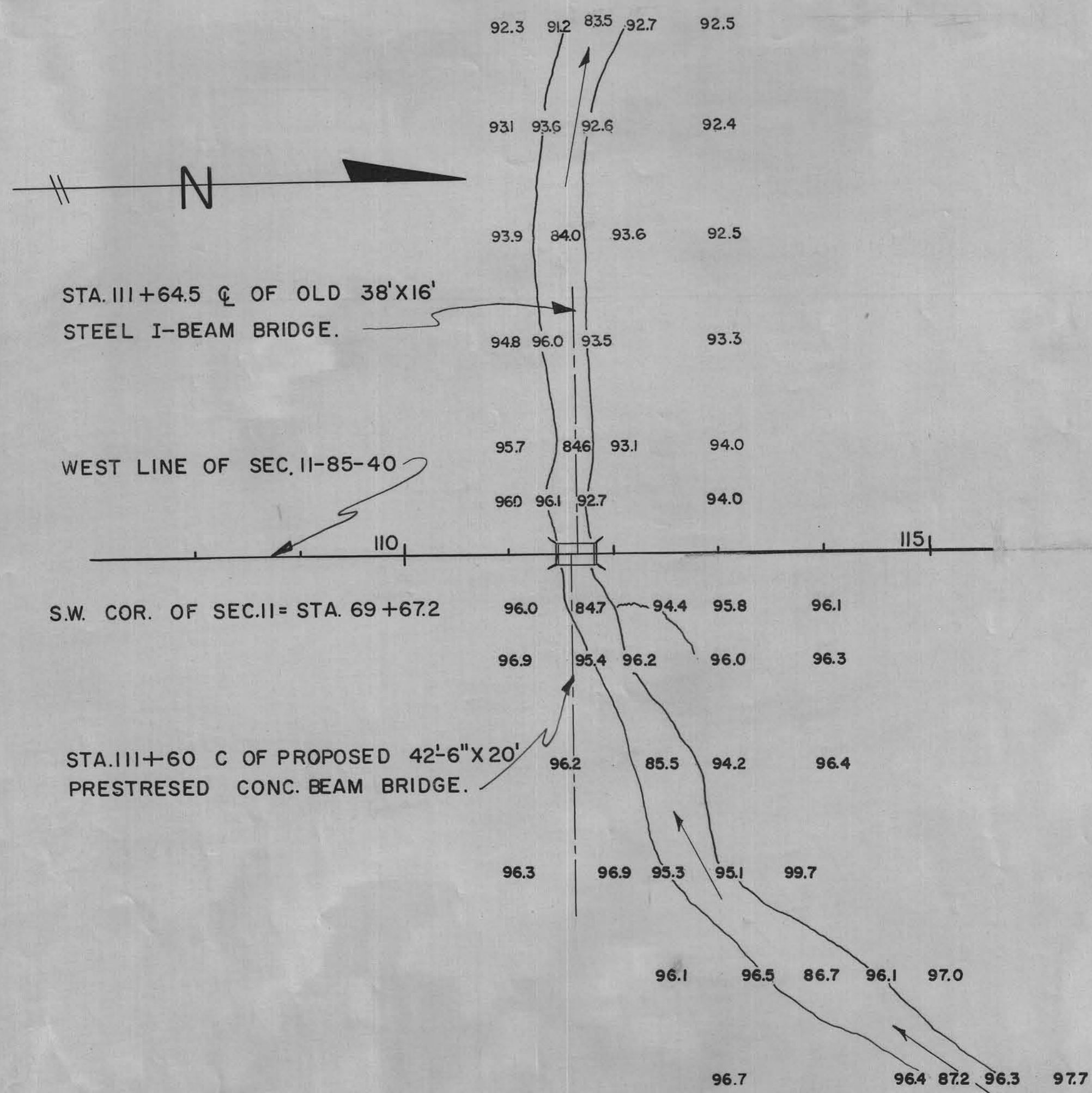


APPROVED _____ DATE _____
 CHAIRMAN

 BOARD OF SUPERVISORS

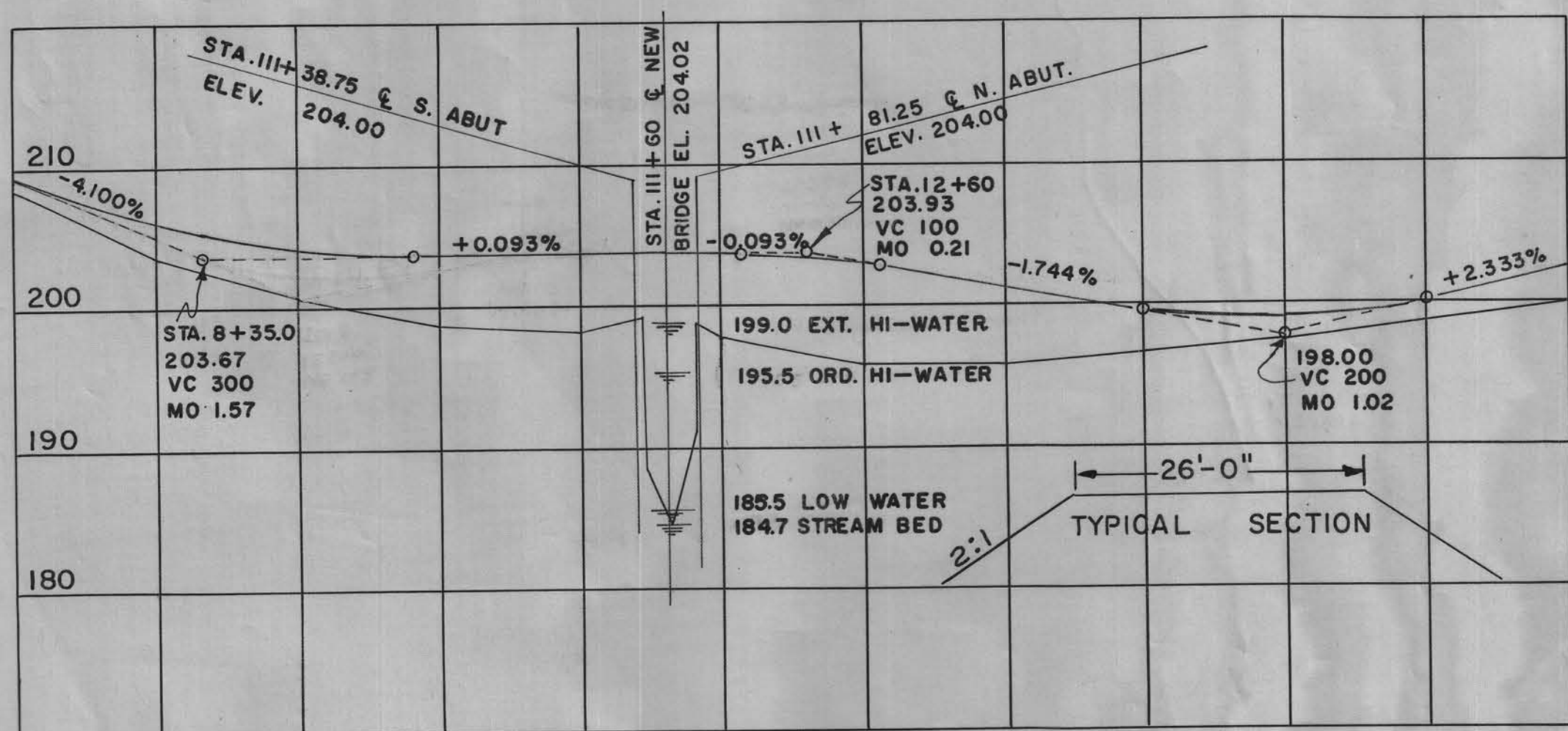
APPROVED _____
 DISTRICT ENGINEER DATE _____
 APPROVED _____
 COUNTY ENGINEER DATE _____

MORGAN TOWNSHIP
T-85N R-40W
BET. SEC. 10 & 11

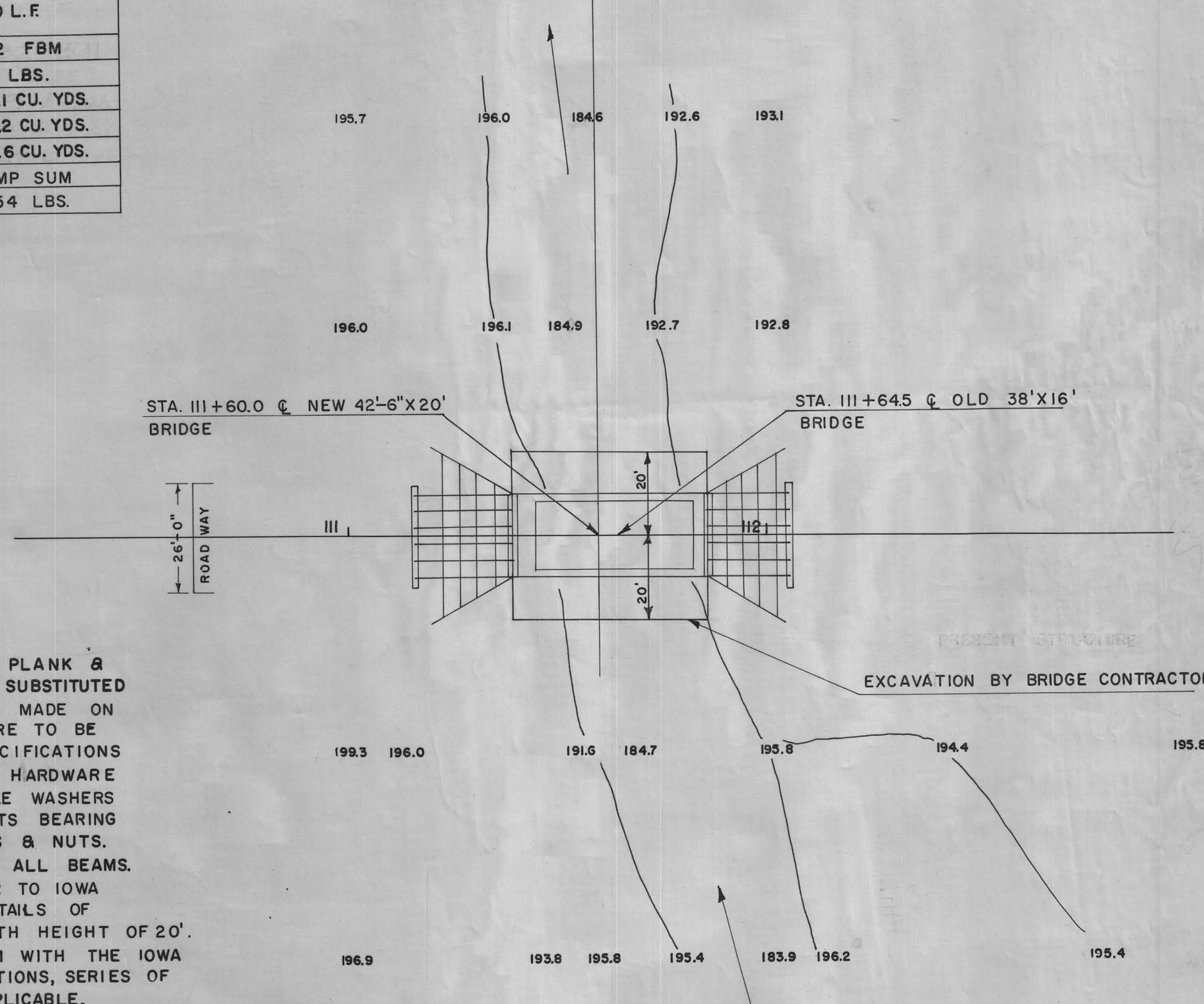
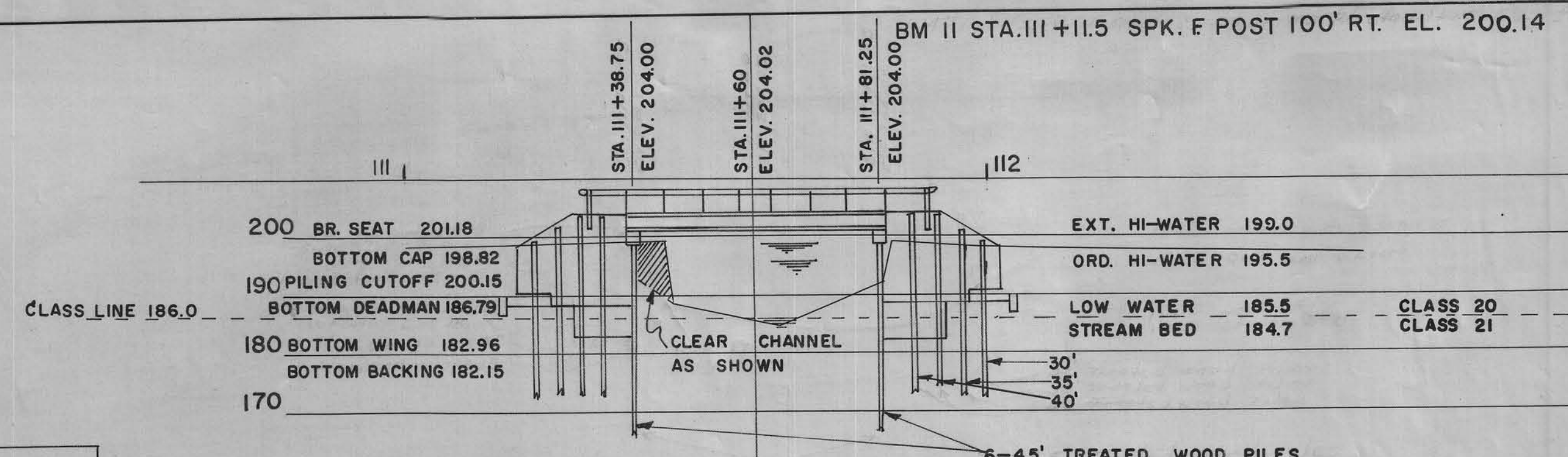


ESTIMATE OF QUANTITIES			
DESCRIPTION	ABUTMENTS	SUPERSTRUCTURE	TOTALS
STRUCTURAL CONCRETE	12.60 CU.YDS.	23.50 CU.YDS.	36.10 CU.YDS.
REINFORCING STEEL	1316 LBS.	4845 LBS.	6161 LBS.
PRE-STRESSED CONC. BEAMS		5 @ 42'-6"	5 @ 42'-6"
HANDRAIL		105' L.F.	105' L.F.
WOOD RAIL POSTS		4	4
TREATED WOOD TRESTLE PILING 12 @ 45', 8 @ 40', 4 @ 35', 4 @ 30'	1120 L.F.		1120 L.F.
TREATED LUMBER	6632 FBM		6632 FBM
GALVANIZED HARDWARE	180 LBS.	38 LBS.	218 LBS.
EXCAVATION CLASS 10			49.1 CU. YDS.
" " 20			340.2 CU. YDS.
" " 21			24.6 CU. YDS.
REMOVAL OF OLD STRUC.			LUMP SUM
STRUCTURAL STEEL	4596 LBS.	858 LBS.	5454 LBS.

STA. III+64.5 CL 38'X16' PRESENT STEEL I BEAM BRIDGE
WOOD FLOOR, WOOD SUBSTRUCTURE, DA= 3300 AC.
REPLACE WITH 42'-6" X 20' PRESTRESSED CONC. BEAM BRIDGE
AT STA. III+60. BRIDGE CONTRACTOR TO REMOVE OLD BRIDGE
AND PILE WITHIN 300' OF BRIDGE AS DIRECTED BY
COUNTY ENGINEER.



SCALE: HORZ. 1" = 100'
VERT. 1" = 10'



GENERAL NOTES:

ALL LUMBER IS TO BE CREOSOTED. BACKING PLANK & WING PLANK IN 10" & 12" WIDTHS MAY BE SUBSTITUTED FOR 8" PLANK SHOWN, BUT PAYMENT WILL BE MADE ON BASIS OF QUANTITIES SHOWN. ALL PILING ARE TO BE CREOSOTED & ARE TO COMPLY WITH THE SPECIFICATIONS FOR TREATED TIMBER TRESTLE PILES. ALL HARDWARE IS TO BE GALVANIZED. C.I. OEGEE OR MALLEABLE WASHERS ARE TO BE USED UNDER ALL HEADS & NUTS BEARING ON WOOD. ALL BOLTS TO HAVE SQUARE HEADS & NUTS. FABRIC BEARING PADS TO BE USED UNDER ALL BEAMS. FOR DETAILS OF SUPER-STRUCTURE REFER TO IOWA HIGHWAY COMMISSION STANDARD H11-1. FOR DETAILS OF ABUTEMENTS REFER TO STANDARD H11-4 WITH HEIGHT OF 20'. ALL MATERIALS & CONSTRUCTION TO CONFORM WITH THE IOWA HIGHWAY COMMISSION STANDARD SPECIFICATIONS, SERIES OF 1960, WITH CURRENT SPECIAL PROVISIONS APPLICABLE.

BRIDGE SIGN ASSEMBLY NOTE:

PLACE TRIPLE THREE-INCH RED REFLECTORS (M-200) AT EACH END OF THE BRIDGE ON BOTH SIDES FOR APPROACHING TRAFFIC. BY COUNTY.

LOCATION:

SEC. 10 & 11 MORGAN TWP
OVER BEAVER CREEK

DESIGN FOR
42'-6" X 20' PRE-STRESSED CONCRETE
BEAM BRIDGE CONCRETE FLOOR
STEEL HANDRAIL TYPE "B"
STA. III+60 PROJ. NO. 62-32
CRAWFORD COUNTY, IOWA



130600