

**SPECIFICATIONS**

DESIGN: AASHTO SERIES OF 1983  
 CONSTRUCTION: STANDARD SPECIFICATIONS OF THE IOWA DEPARTMENT OF TRANSPORTATION, HIGHWAY DIVISION, SERIES OF 1984, PLUS CURRENT SPECIAL PROVISIONS AND SUPPLEMENTAL SPECIFICATIONS.

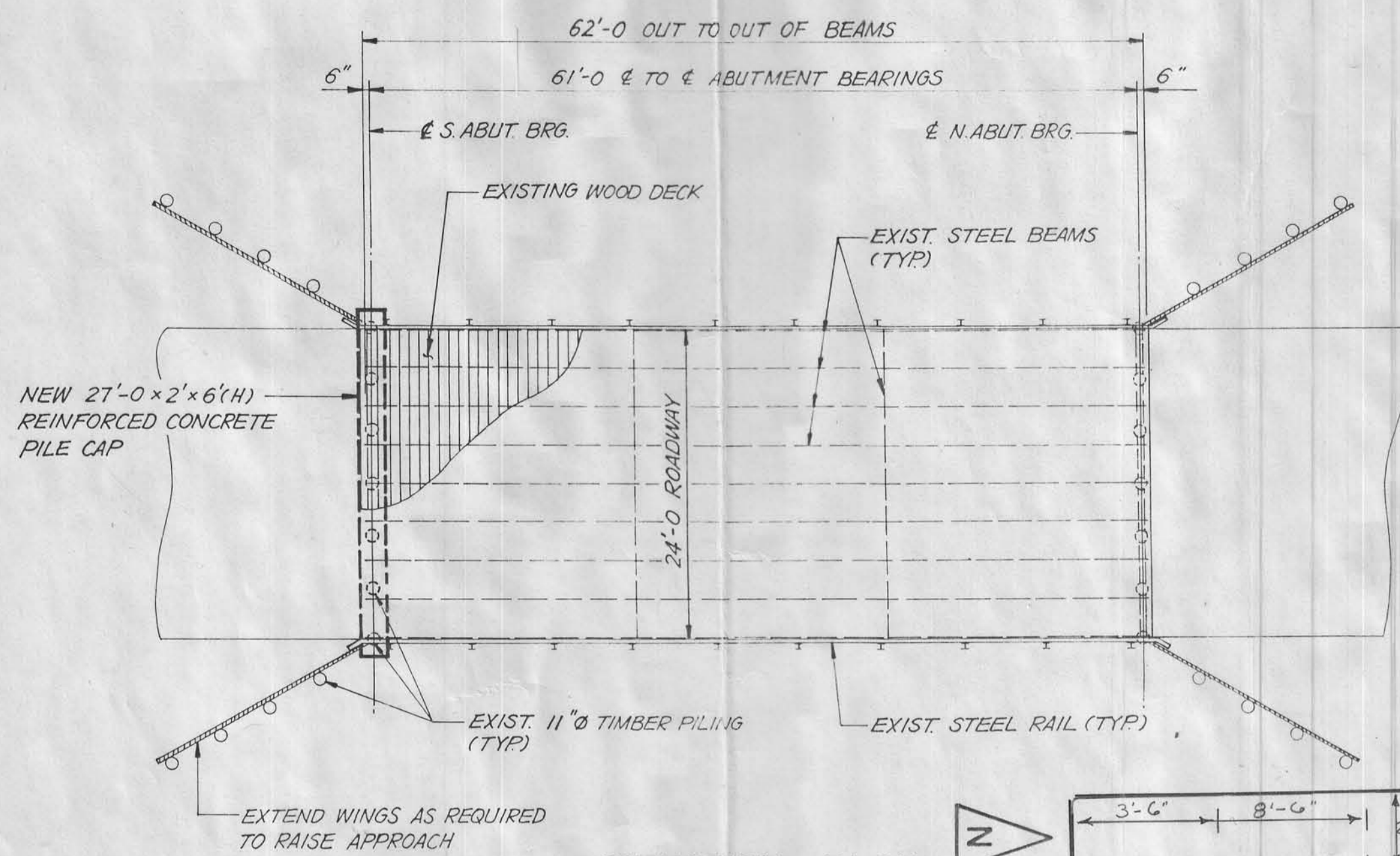
**DESIGN STRESSES**

DESIGN STRESSES FOR THE FOLLOWING MATERIALS ARE IN ACCORDANCE WITH AASHTO STANDARD SPECIFICATIONS FOR HIGHWAY BRIDGES, SERIES OF 1983:

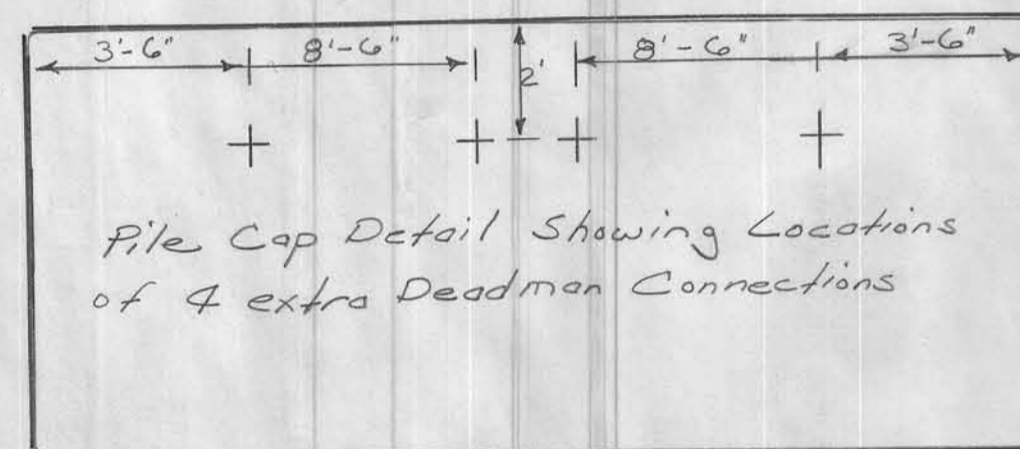
CONCRETE SECTION B f'c = 3,500 PSI  
 REINFORCING STEEL SECTION B ASTM A615 GRADE 60, f's = 24,000 PSI

**GENERAL NOTES**

THIS DESIGN IS FOR THE RAISING OF THE EXISTING SOUTH ABUTMENT TO IMPROVE THE EXISTING VERTICAL ALIGNMENT. THIS BRIDGE WILL RATE LEGAL FOR IOWA TRUCKS. FILL RIPRAP PLACEMENT AT THE SOUTH BERM IS NEEDED TO ASSURE BANK STABILITY. FILL MAY BE REQUIRED TO ASSURE ELEVATIONS SHOWN ON LONGITUDINAL SECTION ARE MAINTAINED. IF BANKS ARE NOT STABILIZED TO ELEVATIONS SHOWN OVERSTRESSING OF ABUTMENT PILING IS LIKELY.

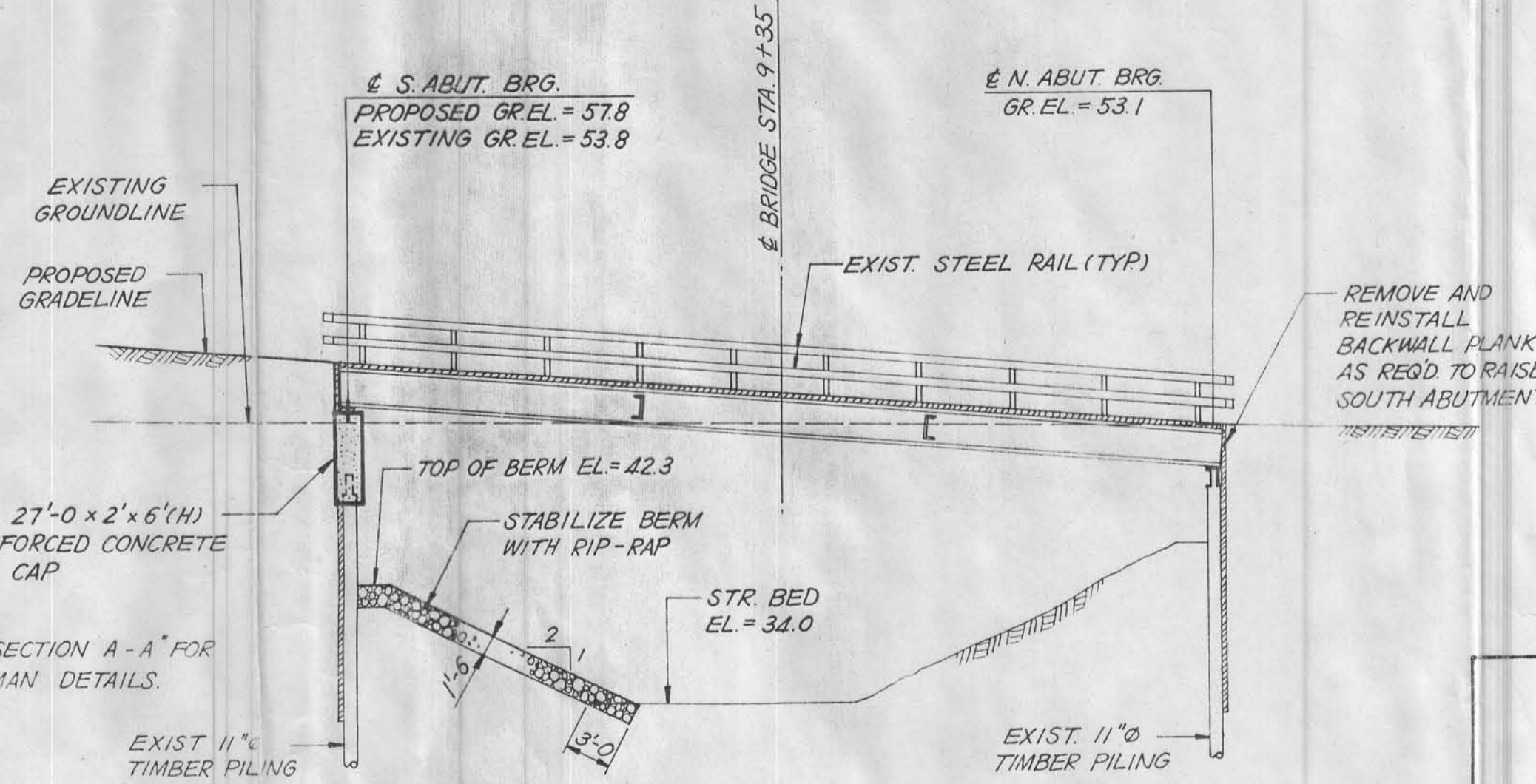


**SITUATION PLAN**  
 SCALE 1" = 10'

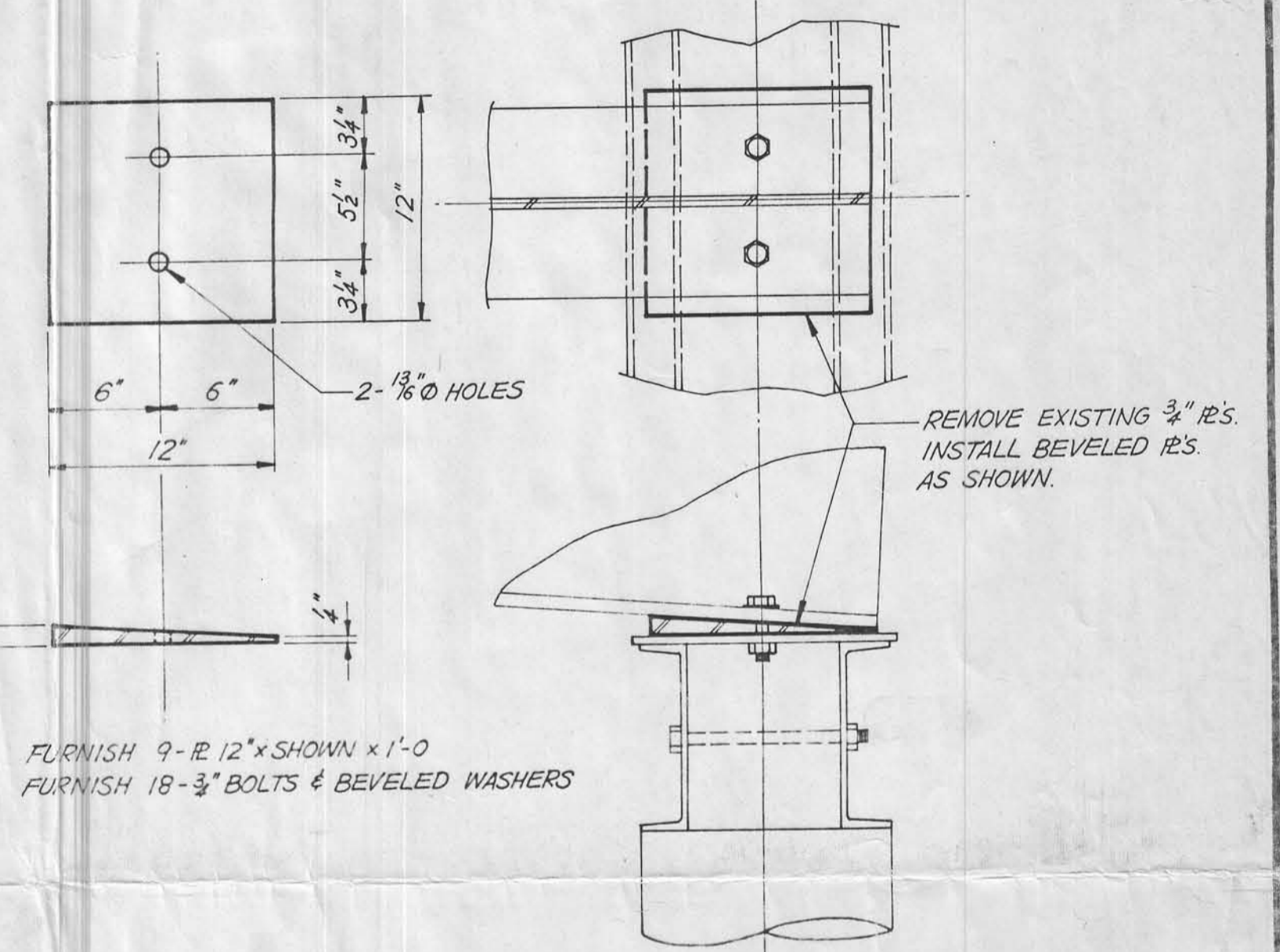


**LOCATION**

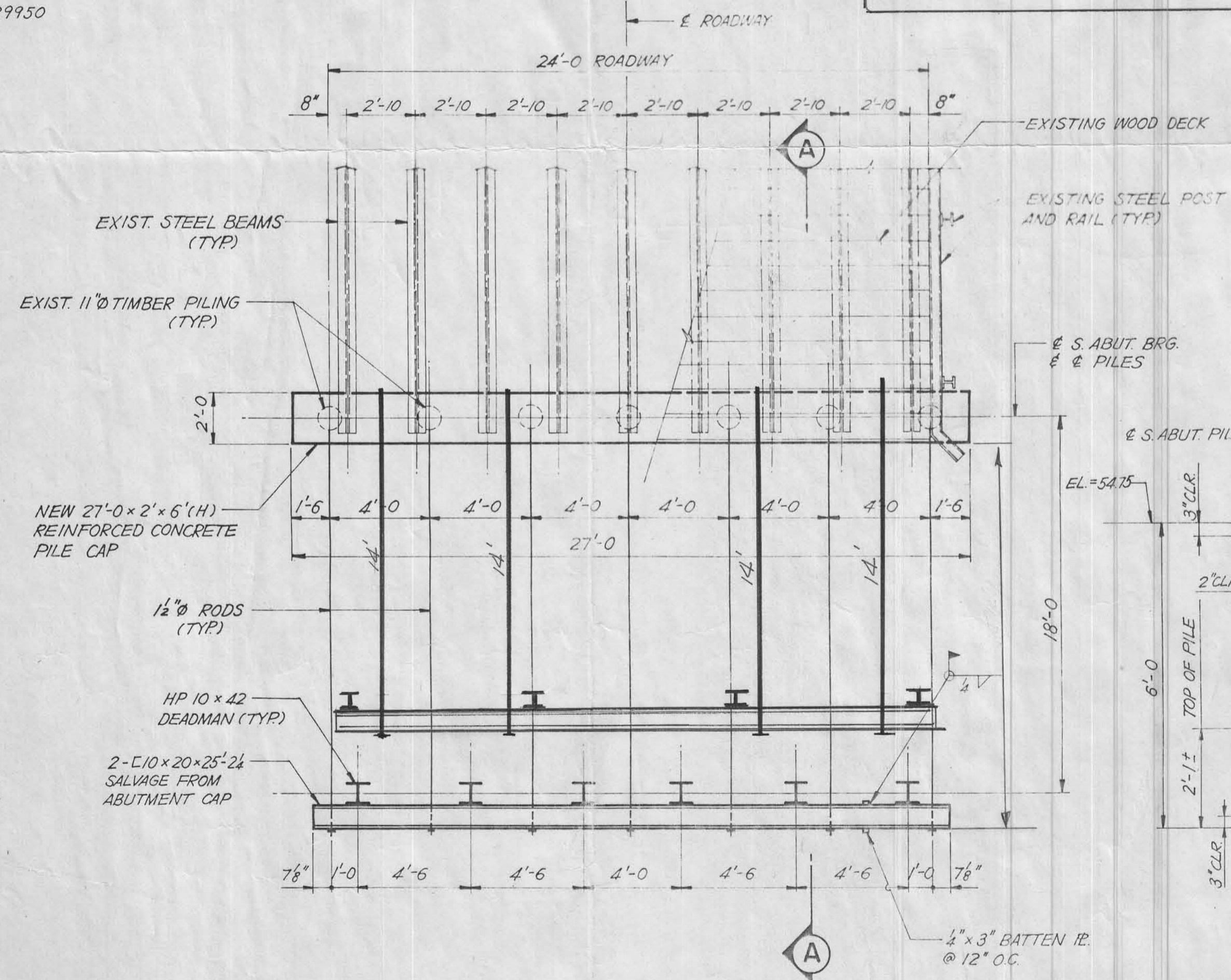
CRAWFORD COUNTY  
 T-85 N, R-37W  
 SECTION 17  
 JACKSON TOWNSHIP  
 OVER TRINKLE CREEK  
 FAWA NO. 129950



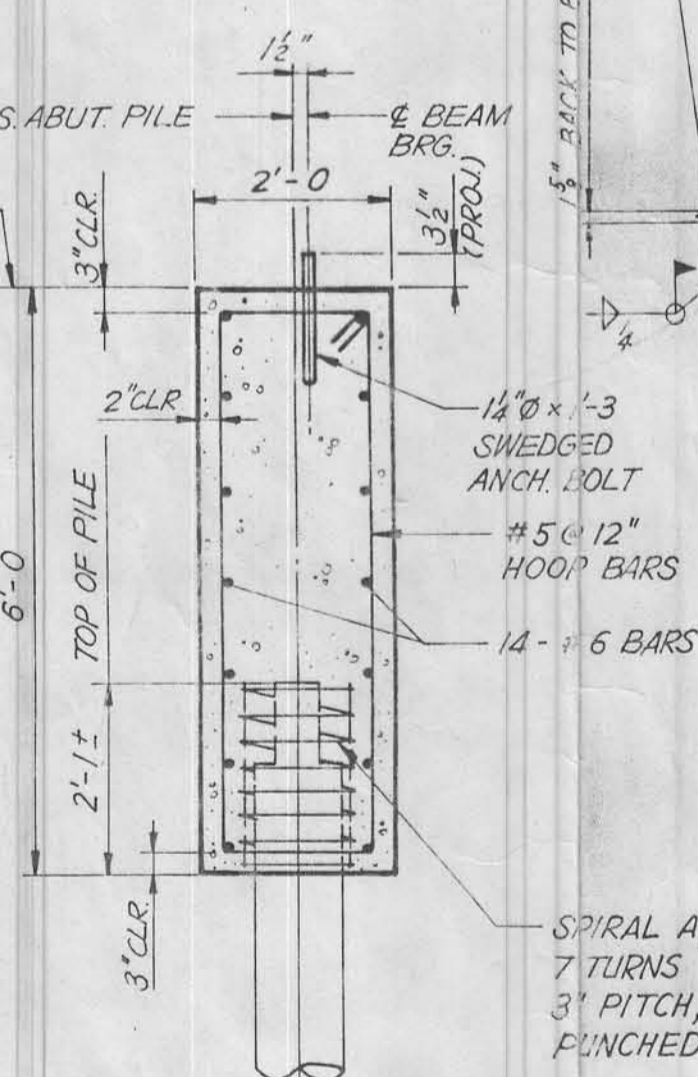
**LONGITUDINAL SECTION ALONG ROADWAY**



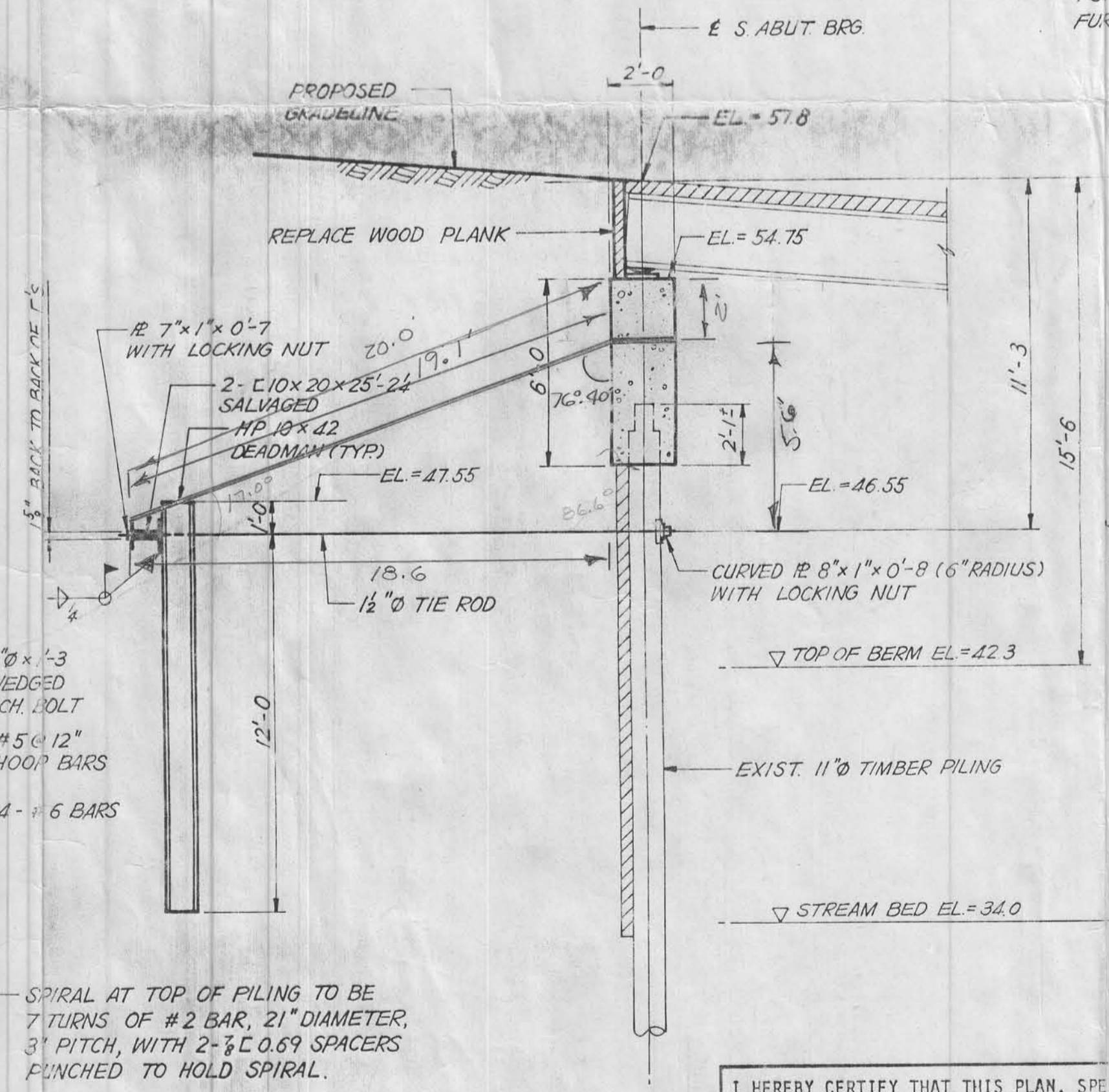
**BEARING DETAILS (NORTH ABUTMENT)**



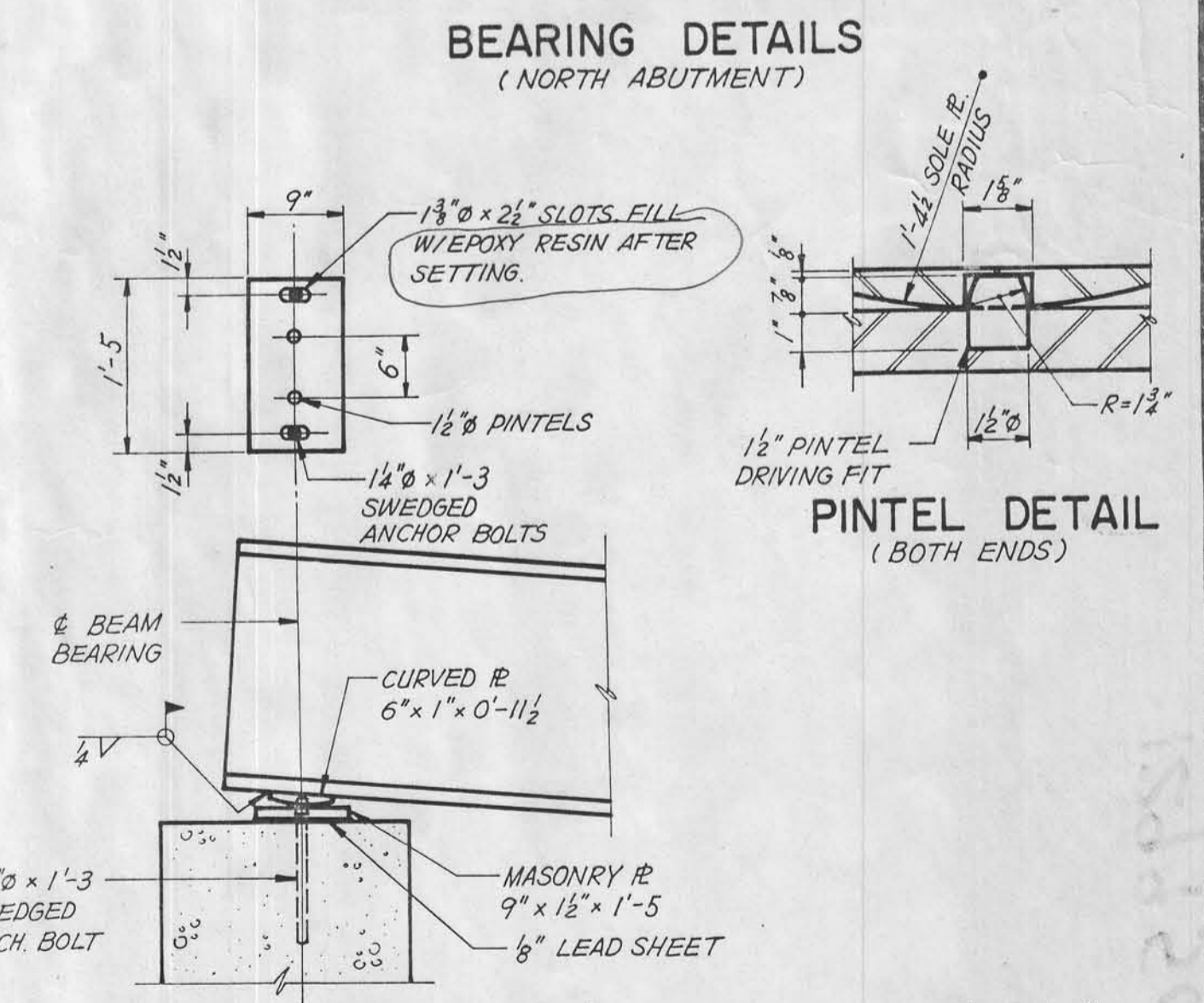
**SOUTH ABUTMENT PLAN**



**PILE CAP DETAIL**



**SECTION A-A**

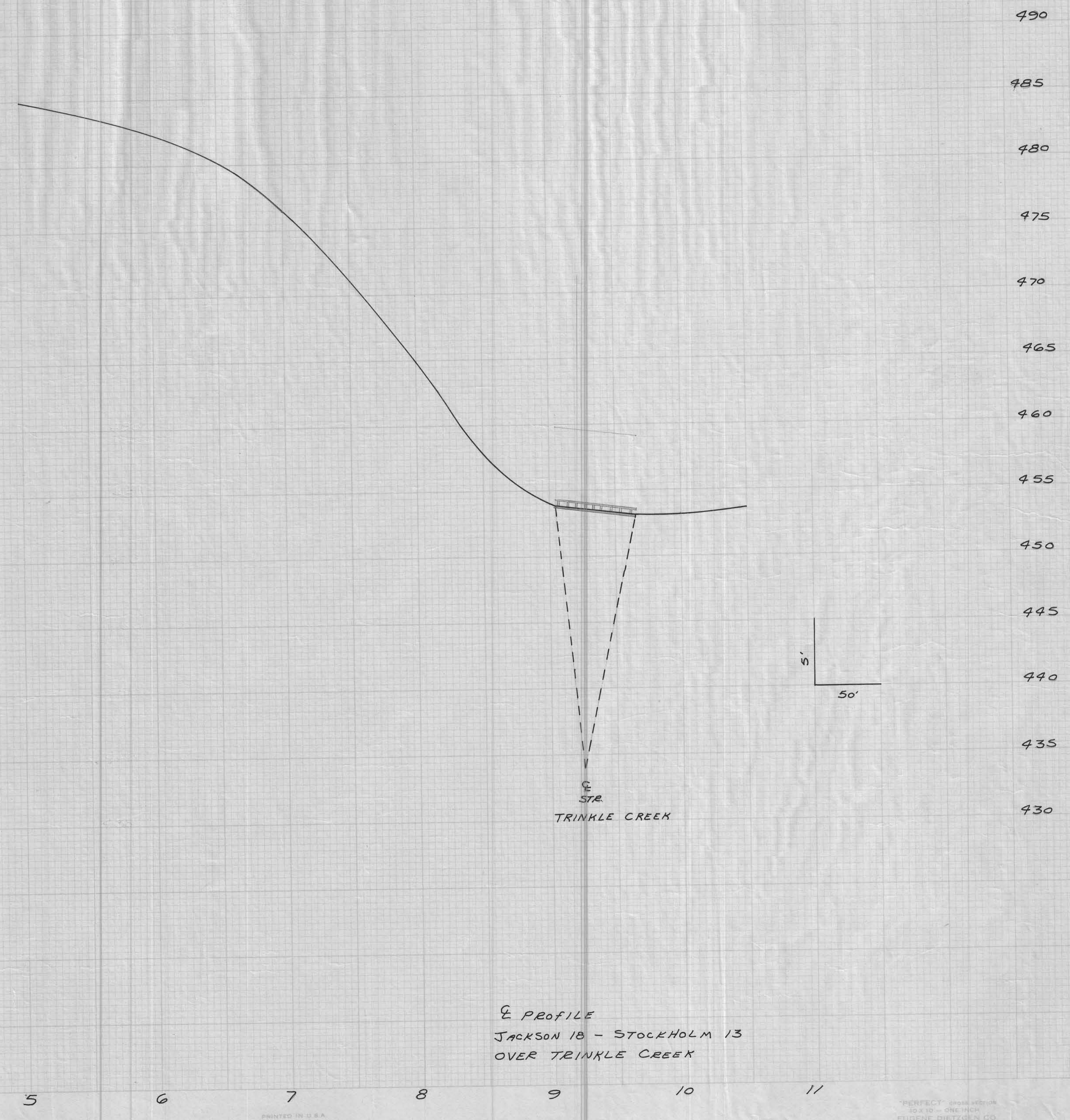
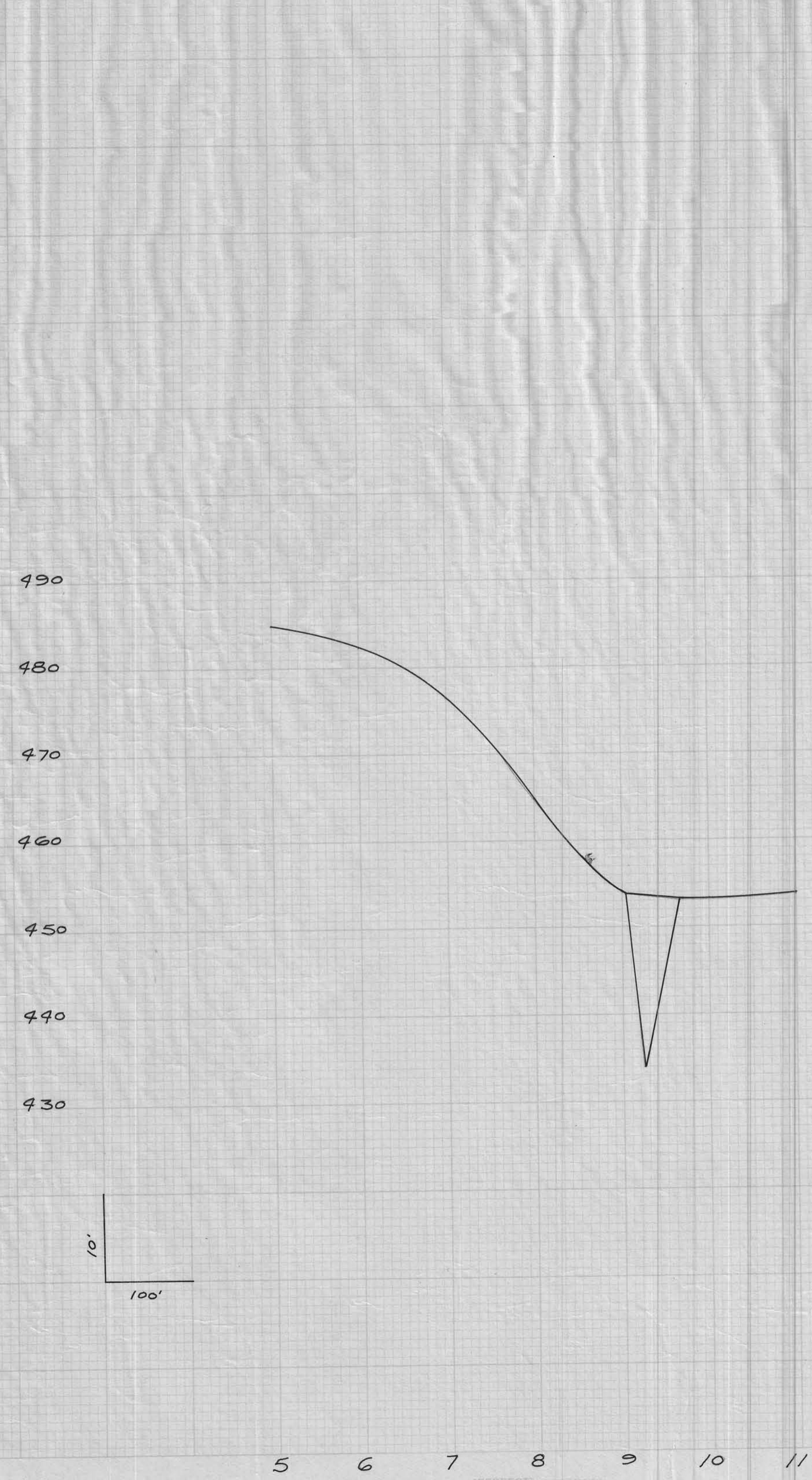


**BEARING DETAILS (SOUTH ABUTMENT)**

I HEREBY CERTIFY THAT THIS PLAN, SPECIFICATION OR REPORT WAS PREPARED BY ME OR UNDER MY DIRECT PERSONAL SUPERVISION AND THAT I AM A DULY REGISTERED PROFESSIONAL ENGINEER UNDER THE LAWS OF THE STATE OF IOWA.

DATE: 8-17-89  
 DAVID M. FITZWATER, P.E. IOWA REG. NO. 11230

**61'-0" x 24' STEEL I-BEAM BRIDGE**  
**RAISE SOUTH ABUTMENT**  
 CRAWFORD COUNTY, IOWA



C&S PROFILE  
JACKSON 10 - STOCKHOLM 13  
OVER TRINKLE CREEK

JACKSON 10 - STOCKHOLM 13  
 OVER TRINKLE CREEK