


PREPARED BY: *MGS*
 FOR USE UP
 PREPARED
 SERIAL NO.

□ 
 Crawford County Recorder Denise Meeves
 Fee Book 2007-0680 REC013790
 03/12/2007 @0206PM # Pages 1
 PLC PLAT CORNER CER
 Total Fees: \$7.00

This document prepared by : Semke & Associates - 712-792-2276
 Micheal G. Semke, L.S. #10318 - 716 N. Crawford St. - Carroll, Iowa

UNITED STATES PUBLIC LAND SURVEY CORNER CERTIFICATE of
 Land Survey Monuments situated in Section 6, Township 84 North, Range 37
 West, of the Fifth Principal Meridian, Crawford County, Iowa.
 Previously recorded in Book , Page in County Recorder's Office.

(Show reason for preparing this certificate, the evidence and detailed procedures used in establishing the corner positions and monumentation found or placed.)

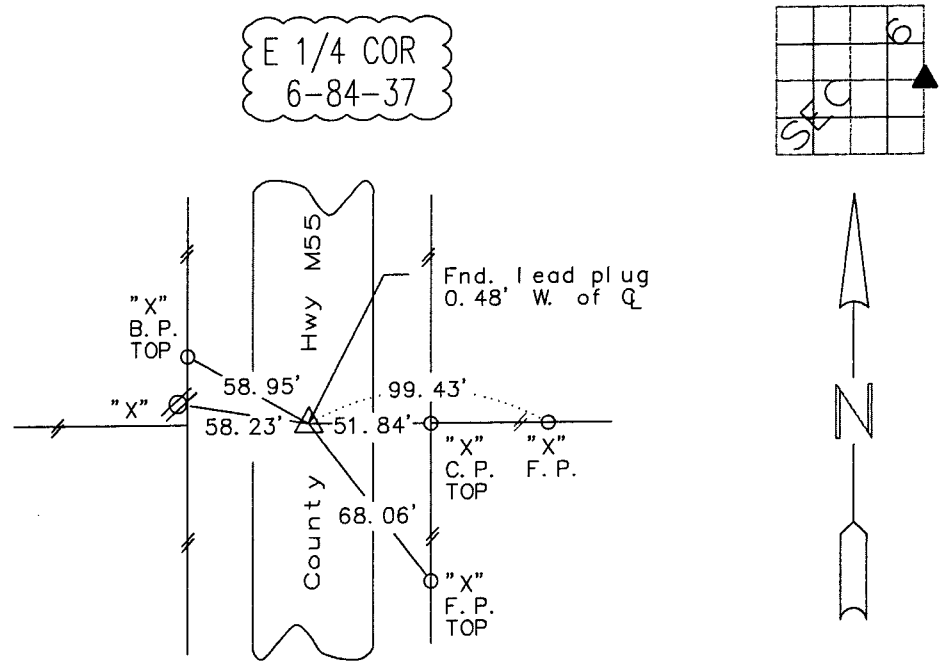
E 1/4 Corner

Found lead plug 0.48' W. of centerline. Existing
 found evidence corresponds with those ties in
 Crawford Co. Engineer's tie books.

Note: All pins set are 1/2" x 24" Rerod w/Yellow Cap #10318 unless noted otherwise.

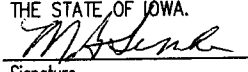
PLAN - VIEW

(Show a minimum of three reference ties to durable physical objects, relevant monuments and physical conditions that will enable recovery of the corner.)

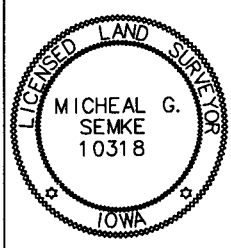


Note: all ties slope chained unless noted otherwise.

I HEREBY CERTIFY THAT THIS LAND SURVEYING DOCUMENT WAS PREPARED AND RELATED SURVEY WORK WAS PERFORMED BY ME OR UNDER MY DIRECT PERSONAL SUPERVISION AND THAT I AM A DULY LICENSED LAND SURVEYOR UNDER THE LAWS OF THE STATE OF IOWA.

 3/19/17
 Signature Date
 Micheal G. Semke, L.S. No. 10318
 Printed of Typed Name

Pages or sheets covered by this seal THIS PAGE My license renewal date is 12/31/07.



List Corners to be Indexed			
Corners	Section	Twp	Range
E 1\4	6	84	37
W 1\4	5	84	37