

INDEXED D/M/gy  
 FOLLOW UP M/gy  
 PROOFED gy  
 SCANNED gy

REC011640 

Crawford County Recorder Denise Meeves  
 FEE BOOK 2006-2408 8/18/2006 @ 10:45AM  
 PLC PLAT CORNER CERBook: Page: #: 1  
 Total Fees: \$7.00

PREPARED BY & RETURN TO MICHAEL G. GEIER, SNYDER & ASSOCIATES, INC. 2727 SW SNYDER ROAD, ANKENY, IOWA 50023 (888) 964-2020

## UNITED STATES PUBLIC LAND SURVEY CORNER CERTIFICATE OF

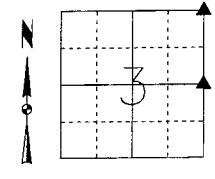
Land Survey Monuments situated in Section 3, Township 84, Range 37, of the Fifth Principal Meridian, CRAWFORD County, Iowa.  
 Previously recorded in N/A in County Recorder's Office.  
 (book, page, document number, ect.)

(Show reason for preparing this certificate, the evidence and detailed procedures used in establishing the corner positions and monumentation found or placed.)

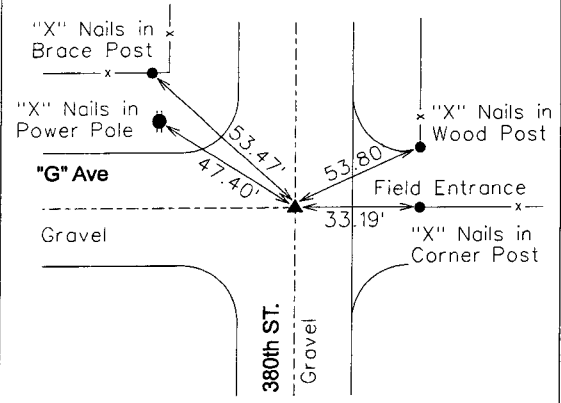
Monument Description and Remarks:  
NORTHEAST CORNER - FOUND CONCRETE MONUMENT IN ¶ "G" AVENUE AND ¶ 380th STREET 13" DEEP. NO COUNTY ENGINEER SECTION CORNER TIES REMAIN; RETIED SECTION CORNER.  
EAST 1/4 CORNER - FOUND CONCRETE MONUMENT IN ¶ 380th STREET USING COUNTY ENGINEER SECTION CORNER TIES AND RETIED SECTION CORNER.

**Plan-View**

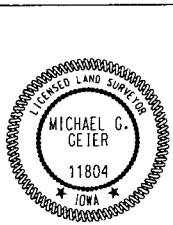
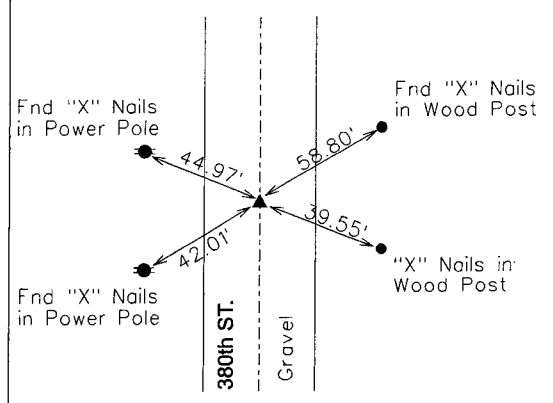
(Show a minimum of three reference ties to durable physical objects, relevant monuments and physical conditions that will enable recovery of the corner.)



**NORTHEAST CORNER**  
FOUND CONCRETE MONUMENT



**E 1/4 CORNER**  
FOUND CONCRETE MONUMENT



I hereby certify that this land surveying document was prepared and the related surveying work was performed by me or under my direct supervision and that I am a duly licensed Land Surveyor under the laws of the State of Iowa.  
*Michael G. Geier 8-10-06*  
 Michael G. Geier, PLS Date  
 License Number 11804  
 My License Renewal Date is December 31, 2007  
 Pages or sheets covered by this seal:  
 SHEET 1 OF 1

**List Corners to be Indexed**

Corners	Section	Twp	Range
NE COR	3	84	37
SE COR	34	85	37
SW COR	35	85	37
NW COR	2	84	37
E 1/4 COR	3	84	37
W 1/4 COR	2	84	37