

INDEXED _____
 FOLLOW UP _____
 PROOFED _____
 SCANNED _____

REC011656



Crawford County Recorder Denise Meeves
 FEE BOOK 2006-2424 8/18/2006 @ 11:02AM
 PLC PLAT CORNER CERBook: Page: #: 1
 Total Fees: \$7.00

PREPARED BY & RETURN TO MICHAEL G. GEIER, SNYDER & ASSOCIATES, INC. 2727 SW SNYDER ROAD, ANKENY, IOWA 50023 (888) 964-2020

UNITED STATES PUBLIC LAND SURVEY CORNER CERTIFICATE OF

Land Survey Monuments situated in Section 27, Township 84, Range 37, of the Fifth Principal Meridian, CRAWFORD County, Iowa.
 Previously recorded in N/A in County Recorder's Office.
 (book, page, document number, ect.)

(Show reason for preparing this certificate, the evidence and detailed procedures used in establishing the corner positions and monumentation found or placed.)

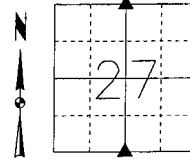
Monument Description and Remarks:

NORTH 1/4 CORNER - FOUND 5/8" IRON ROD 4" ABOVE SURFACE EAST OF FENCE INTERSECTION AND RETIED SECTION CORNER.

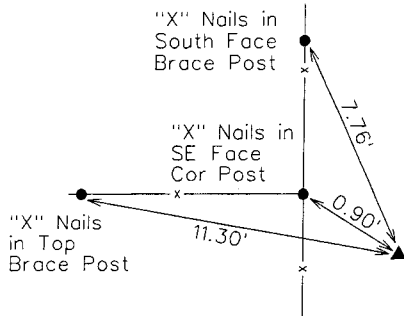
SOUTH 1/4 CORNER - FOUND 1" IRON BAR IN @ "L" AVE 4" DEEP. NO EXISTING TIES FOUND; RETIED SECTION CORNER.

Plan-View

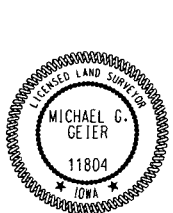
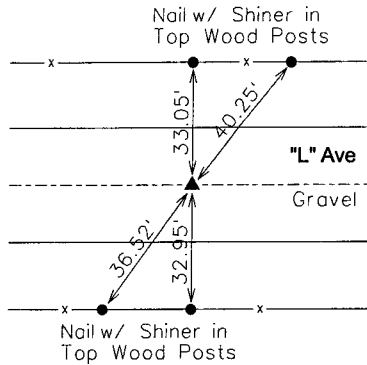
(Show a minimum of three reference ties to durable physical objects, relevant monuments and physical conditions that will enable recovery of the corner.)



N 1/4 CORNER
 FND 5/8" IRON ROD



S 1/4 CORNER
 FOUND 1" IRON BAR



I hereby certify that this land surveying document was prepared and the related surveying work was performed by me or under my direct supervision and that I am a duly licensed Land Surveyor under the laws of the State of Iowa.
Michael G. Geier 8-10-06
 Michael G. Geier, PLS Date
 License Number 11804
 My License Renewal Date is December 31, 2007
 Pages or sheets covered by this seal:
 SHEET 1 OF 1

List Corners to be Indexed

Corners	Section	Twp	Range
N 1/4 COR	27	84	37
S 1/4 COR	22	84	37
S 1/4 COR	27	84	37
N 1/4 COR	34	84	37