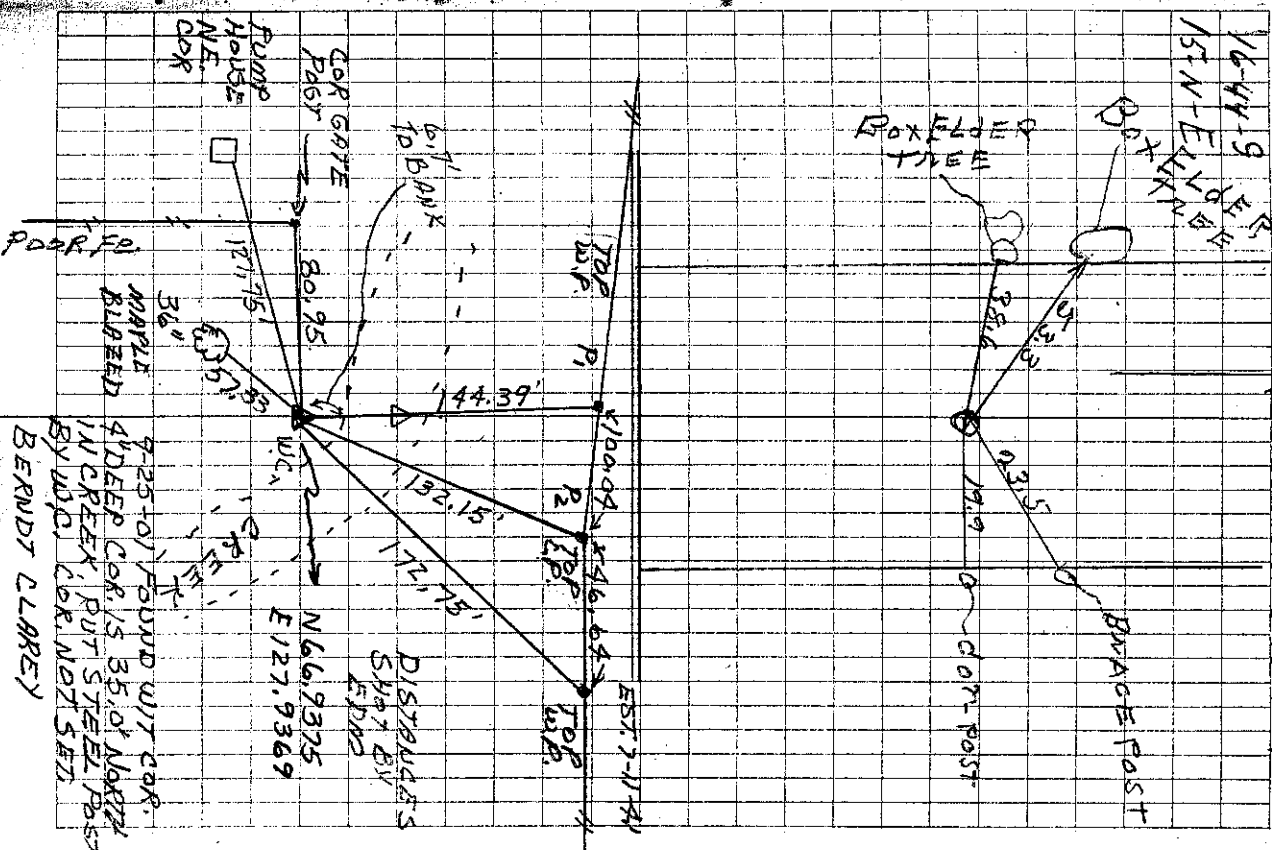


ESTABLISHED 10-4-39



32 3/8 DUG 6' X 3' X 20' NO FIND  
ESTAB CORNER BITIES

FROM BK# P#  
Set C.M.

7'ies FROM X-splks

38.6 E FROM BOX ELDER

53.3 SE

19.9 W. . . . . COR POST

23.5 S.W. . . . . BRACE POST

About 3.5' S OF FE FROM E.

29' Car. fills in creek

32' Established by procdm the Fe line to center of section to interior of bridge car

Set W/hrs cor 35' S

Car is 26286 W of NE 21, 2622 S 1/4

ties FROM X-splks to with. Car

37.6 ENLS center of com. well

13.0 WWD of 20' post W/hrs to ground

29.2 W of box elder