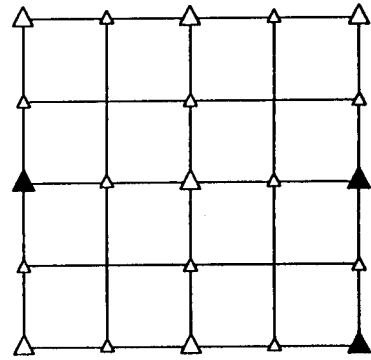


# UNITED STATES PUBLIC LAND SURVEY CORNER CERTIFICATE OF

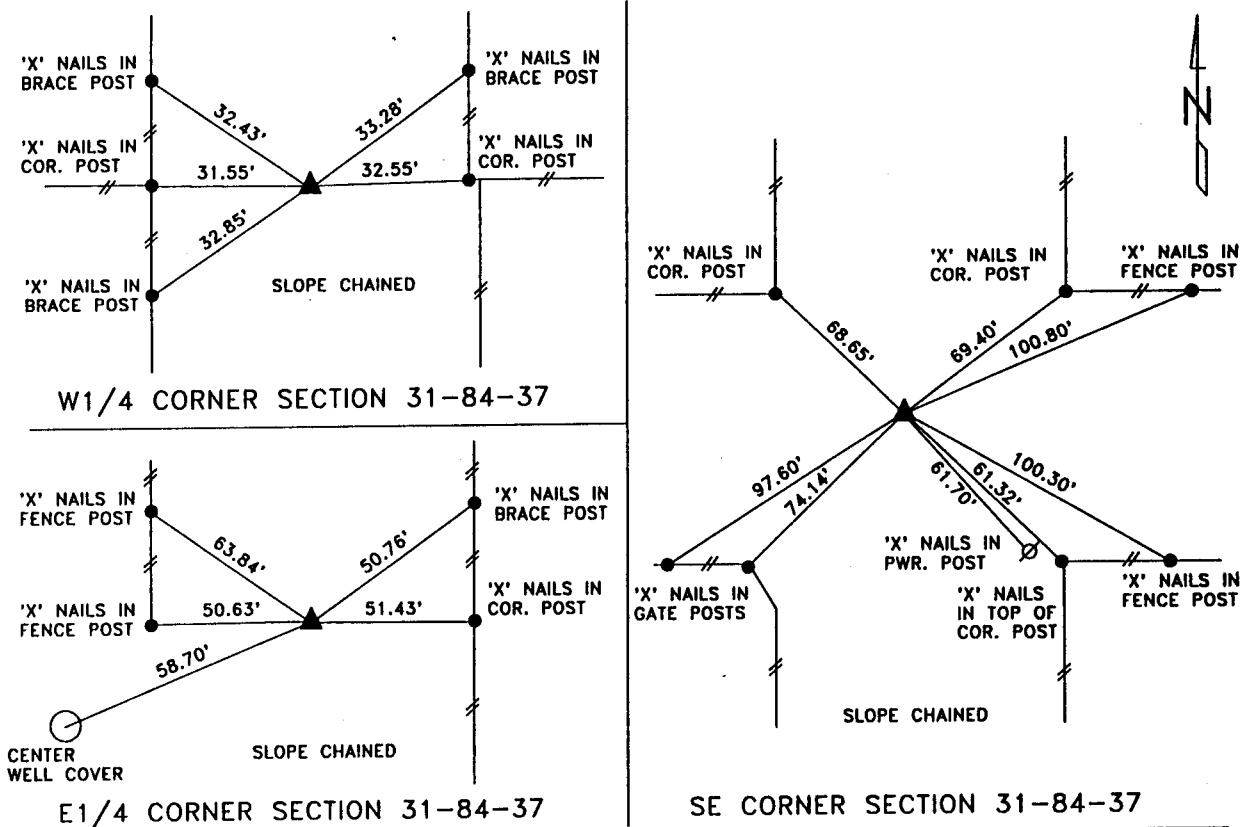
LAND SURVEY MONUMENT SITUATED IN SECTION 31, T 84 N, R 37 W OF  
THE 5TH P.M., CRAWFORD COUNTY, IOWA.  
PREVIOUSLY RECORDED IN BOOK \_\_\_\_\_, PAGE \_\_\_\_\_, OTHER \_\_\_\_\_

## MONUMENT DESCRIPTION AND REMARKS

- W1/4 CORNER - SET 5/8" IRON PIN W/CAP #8893 5" DEEP ON SPLIT BETWEEN NW COR. & SW COR. & ON LINE WITH FENCE LINE EAST & WEST
- E1/4 CORNER - SET PK NAIL IN ASPHALT FROM COUNTY TIES
- SE CORNER - SET PK NAIL IN ASPHALT FROM COUNTY TIES



## PLAN VIEW SHOWING RELATIVE LOCATION OF MONUMENT AND REFERENCE POINTS.



I HEREBY CERTIFY THAT THE SURVEY WORK WAS COMPLETED AND THIS LAND SURVEYING DOCUMENT WAS PREPARED BY ME OR UNDER MY DIRECT PERSONAL SUPERVISION AND THAT I AM A DULY REGISTERED LAND SURVEYOR UNDER THE LAWS OF THE STATE OF IOWA.

*Terence E. Crawford*  
TERENCE E. CRAWFORD



DATE JUN 21 1996  
IA REG. NO. 8893  
EXP. DATE DECEMBER 31, 1997  
SE PROJECT NO. 2306

SUNDQUIST ENGINEERING, P.C.  
DENISON, IOWA 51442 PH. (712)263-8118

## RECORDING OFFICER

FILED DENISON, IOWA  
CRAWFORD COUNTY

96 JUL -2 AM 8:22

INST. NO. 96-1918  
DENISE MEEVES, RECORDER  
*Denise Meeves*  
FEE 6.00

INDEXED \_\_\_\_\_  
FOLLOW UP ME  
PROJECTED \_\_\_\_\_