

FILED DENISON, IOWA
CRAWFORD COUNTY

2003 MAR 12 PM 12:03

INST. NO. 2003-0935
DENISE MEEVES, RECORDER
Denise Meeves
FEE: 6.00

INDEXED
FILED
RECORDED

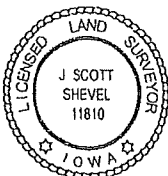
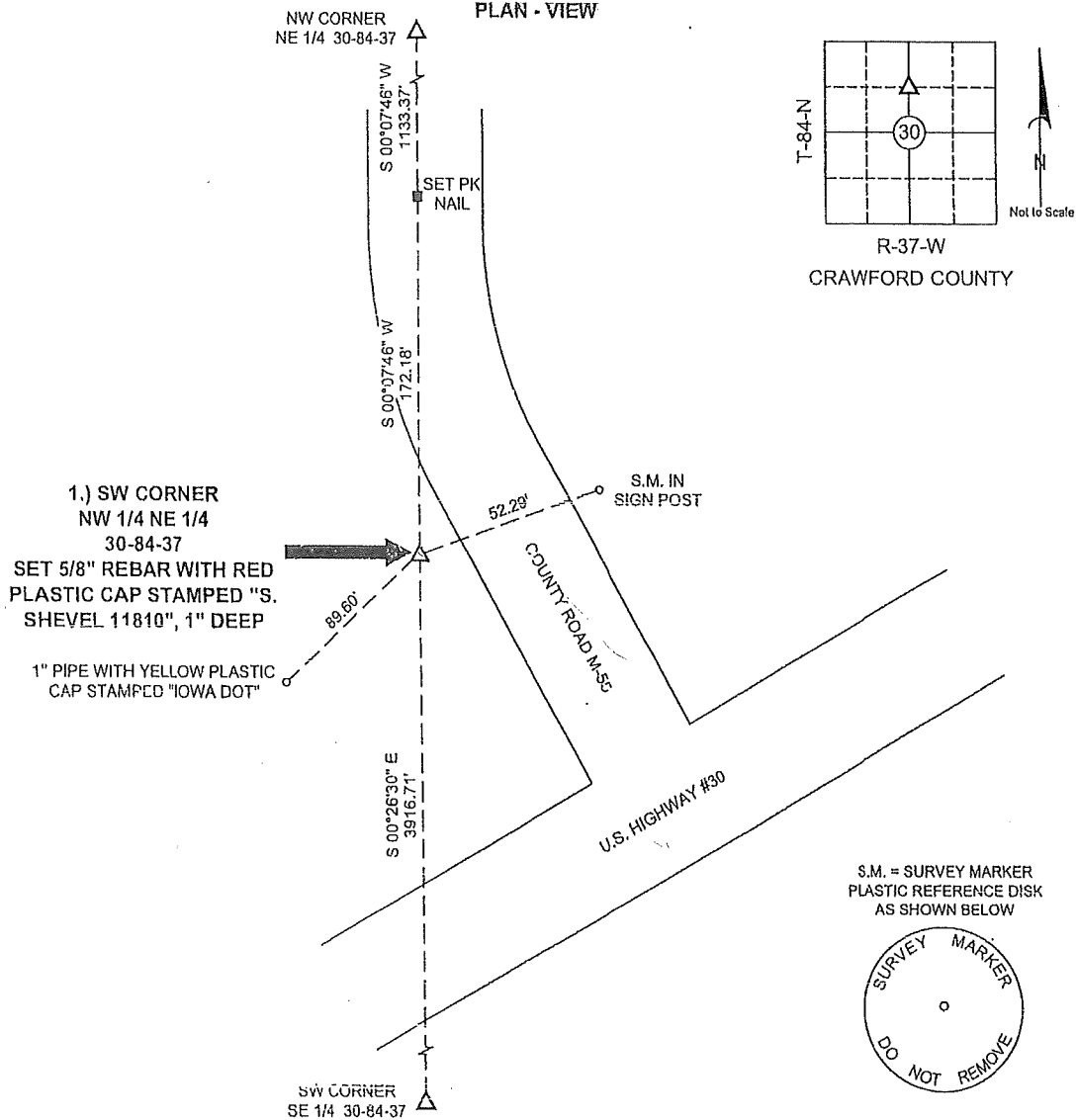
PREPARED BY: J. SCOTT SHEVEL L.S., KUEHL AND PAYER LTD., 423 WEST MAIN ST., SAC CITY, IA 50583 PH. (712)652-7859

UNITED STATES PUBLIC LAND SURVEY CORNER CERTIFICATE OF

LAND SURVEY MONUMENTS SITUATED IN SECTION 30, TOWNSHIP 84 NORTH,
RANGE 37 WEST, OF THE 5TH PRINCIPAL MERIDIAN, CRAWFORD COUNTY, IOWA.
PREVIOUSLY RECORDED IN BOOK _____ PAGE _____
MONUMENT DESCRIPTION AND REMARKS:

1.) SW CORNER NW 1/4 NE 1/4 30-84-37: USED INFORMATION FROM PREVIOUS SURVEY TO RESET 5/8" REBAR WITH RED PLASTIC CAP STAMPED "S. SHEVEL 11810", 1" DEEP

PLAN - VIEW



I hereby certify that this land surveying document was prepared and the related survey work was performed by me or under my direct personal supervision and that I am a duly licensed Land Surveyor under the laws of the State of Iowa.

J. Scott Shevel 2/25/03
J. Scott Shevel
License Number 11810
My license renewal date is December 31, 2003
Pages covered by this seal 1

Date:

List Corners to be Indexed

Corners	Section	Township	Range
1) SW CORNER NW 1/4 NE 1/4	30	84	37