

INDEXED DM y
 FOLLOW UP y
 PROOFED y
 SCANNED y

PREPARED BY & RETURN TO MIKE SCHULTE, SNYDER & ASSOCIATES, INC. 2727 SW SNYDER ROAD, ANKENY, IOWA 50023 (888) 964-2020

UNITED STATES PUBLIC LAND SURVEY CORNER CERTIFICATE OF

Land Survey Monuments situated in Section 29, Township 84 N, Range 37 W, of the Fifth Principal Meridian, CRAWFORD, County, Iowa. Previously recorded in (SEE BELOW) in County Recorder's Office.
 (book, page, document number, ect.)

(Show reason for preparing this certificate, the evidence and detailed procedures used in establishing the corner positions and monumentation found or placed.)

Monument Description and Remarks:

NE CORNER SE1/4 NW1/4 SECTION 29-84-37
SET 1/2" REBAR WITH YELLOW CAP #17979 AT THE MIDPOINT OF THE CENTER OF SECTION AND THE NORTH 1/4 CORNER
NO CORNER OF RECORD OR CERTIFICATE WAS FOUND

NOTE: THE LOCATION OF THE NE CORNER OF THE SE1/4 NW1/4 WAS REQUESTED BY BOB LUDWIG. IT WAS ALSO REQUESTED THAT ADDITIONAL TIES CLOSE TO THE CORNER NOT BE SET, SO NOT TO CONFUSE THE CORNER POSITION

Plan-View

(Show a minimum of three reference ties to durable physical objects, relevant monuments and physical conditions that will enable recovery of the corner.)

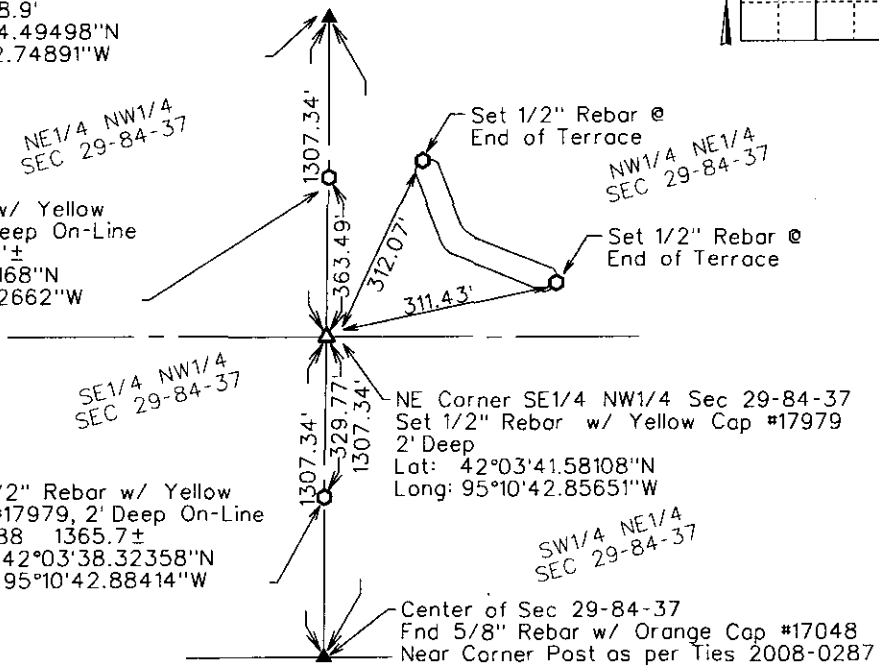
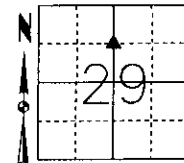
N1/4 Corner Sec 29-84-37
 Fnd Concrete Monument w/ Iron Pin
 NAVD88 1308.9'
 Lat: 42°03'54.49498"N
 Long: 95°10'42.74891"W

Set 1/2" Rebar w/ Yellow Cap #17979 2' Deep On-Line
 NAVD88 1358.0'±
 Lat: 42°03'45.17168"N
 Long: 95°10'42.82662"W

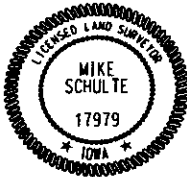
Set 1/2" Rebar w/ Yellow Cap #17979, 2' Deep On-Line
 NAVD88 1365.7'±
 Lat: 42°03'38.32358"N
 Long: 95°10'42.88414"W

NE Corner SE1/4 NW1/4 Sec 29-84-37
 Set 1/2" Rebar w/ Yellow Cap #17979 2' Deep
 Lat: 42°03'41.58108"N
 Long: 95°10'42.85651"W

Center of Sec 29-84-37
 Fnd 5/8" Rebar w/ Orange Cap #17048
 Near Corner Post as per Ties 2008-0287
 NAVD88 1314.7'
 Lat: 42°03'28.66716"N
 Long: 95°10'42.96410"W



NOTE: ALL DISTANCES MEASURED HORIZONTAL



I hereby certify that this land surveying document was prepared and the related surveying work was performed by me or under my direct supervision and that I am a duly licensed Land Surveyor under the laws of the State of Iowa.

Mike Schulte 5/27/08
 Mike Schulte, PLS Date

License Number 17979
 My License Renewal Date is December 31, 2009

Pages or sheets covered by this seal:
SHEET 1 OF 1

List Corners to be Indexed

Corners	Section	Twp	Range
NE Corner SE1/4 NW1/4	29	84	37