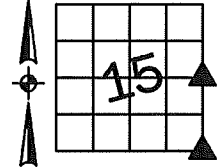


Denise Meeves RECORDER
 Crawford County, Iowa
 Instr. Number: 2022-3089
 Recorded: 12/28/2022 at 11:15:01.0 AM
 Pages 1
 County Recording Fee: \$7.00
 Iowa E-Filing Fee: \$3.13
 Combined Fee: \$10.13
 Revenue Tax:

PREPARED BY AND RETURN TO: MIKE SCHULTE, SCHULTE SURVEYING, INC., 2003 390TH STREET, WESTSIDE, IA 51467 (712) 790-3489

UNITED STATES PUBLIC LAND SURVEY CORNER CERTIFICATE OF
 LAND SURVEY MONUMENTS SITUATED IN SECTION 15, TOWNSHIP 84 NORTH, RANGE 37 WEST, OF THE FIFTH
 PRINCIPAL MERIDIAN, CRAWFORD COUNTY, IOWA. PREVIOUSLY RECORDED IN SEE BELOW IN COUNTY
(book, page instrument number)
 RECORDER'S OFFICE.



E1/4 CORNER

FND CONCRETE MONUMENT

N=7269767.36 E=16663703.20

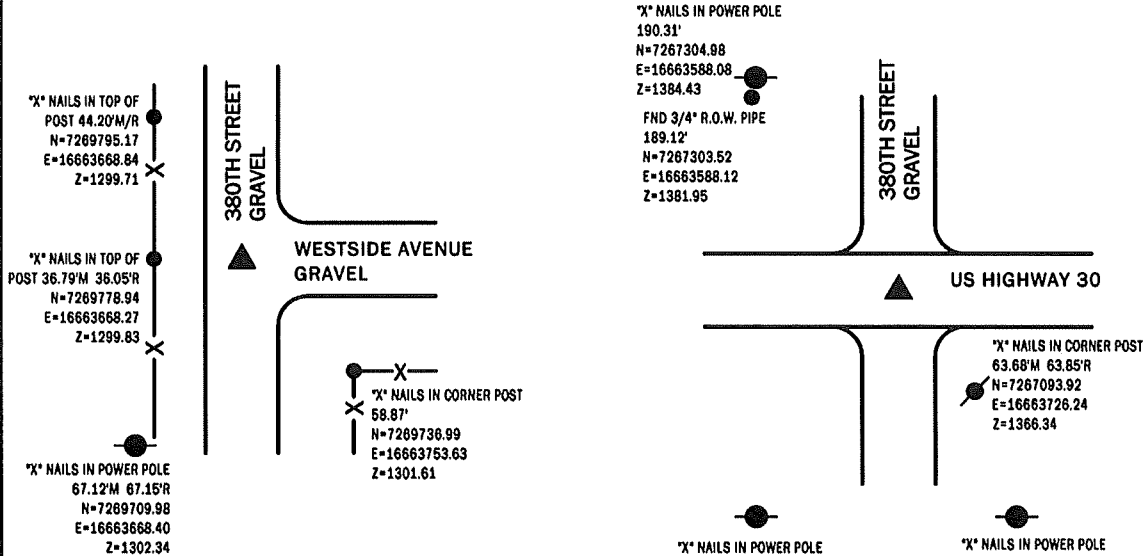
USED CERTIFICATE RECORDED IN FEE BOOK 2006-2419 TO FIND A
 CONCRETE MONUMENT. VERIFIED WITH 3 REMAINING TIES.
 THIS CERTIFICATE IS BEING FILED TO UPDATE THE FOUND MONUMENT.

SE CORNER

FND MAG NAIL IN ASPHALT

N=7267153.14 E=16663702.81

USED CERTIFICATE RECORDED IN FEE BOOK 2006-2419 TO FIND A
 MAG NAIL IN THE ASPHALT ROAD. VERIFIED WITH 1 REMAINING TIE.
 THIS CERTIFICATE IS BEING FILED TO UPDATED THE REFERENCE TIES.



*All distances are measured horizontally unless noted.

I HEREBY CERTIFY THAT THIS LAND SURVEYING DOCUMENT WAS
 PREPARED BY ME OR UNDER MY DIRECT PERSONAL SUPERVISION AND
 THAT I AM A DULY LICENSED PROFESSIONAL LAND SURVEYOR UNDER
 THE LAWS OF THE STATE OF IOWA.

Mike Schulte
 MIKE SCHULTE
 LICENSE NUMBER: 17979
 LICENSE RENEWAL DATE IS DECEMBER 31, 2023
 PAGES COVERED BY THIS SEAL: 1 OF 1
 2022/12/28
 DATE



LIST CORNERS TO BE INDEXED

CORNER	SECTION	TWP	RANGE
E1/4 CORNER	15	84	37
W1/4 CORNER	14	84	37
SE CORNER	15	84	37
SW CORNER	14	84	37
NW CORNER	23	84	37
NE CORNER	22	84	37

BASIS OF BEARING

IARCS ZONE 6 - US SURVEY FEET
 IGRN DERIVED - NAD83(2011)(EPOCH 2010.00)

SCHULTE SURVEYING, INC.

DRAWN BY: MLS/SLG
 PROJ NUMBER: 22-087