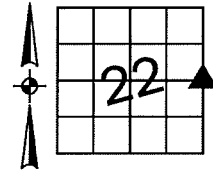


Denise Meeves RECORDER
 Crawford County, Iowa
 Instr. Number: 2020-1406
 Recorded: 7/16/2020 at 3:01:04.0 PM
 Pages 1
 County Recording Fee: \$7.00
 Iowa E-Filing Fee: \$3.13
 Combined Fee: \$10.13
 Revenue Tax:

PREPARED BY AND RETURN TO: MIKE SCHULTE, SCHULTE SURVEYING, INC., 2003 390TH STREET, WESTSIDE, IA 51467 (712) 790-3489

UNITED STATES PUBLIC LAND SURVEY CORNER CERTIFICATE OF

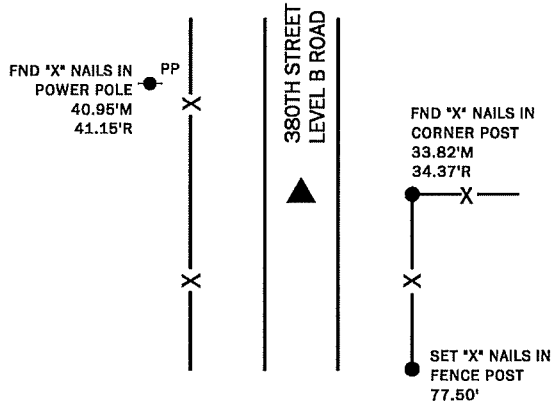
LAND SURVEY MONUMENTS SITUATED IN SECTION 22, TOWNSHIP 84 NORTH, RANGE 37 WEST, OF THE FIFTH PRINCIPAL MERIDIAN, CRAWFORD COUNTY, IOWA. PREVIOUSLY RECORDED IN SEE BELOW IN COUNTY
(book, page instrument number)
 RECORDER'S OFFICE.



EAST 1/4 CORNER SEC. 22-84-37

SET 5/8" REBAR YPC 17979 12" DEEP
 N=7264536.03 E=16663726.24

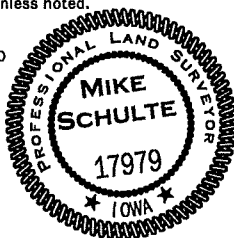
USED CERTIFICATE RECORDED IN INSTRUMENT NO. 2006-2420, PLAT OF SURVEY RECORDED IN BOOK 13 PAGE 79B AND A METAL DETECTOR TO SEARCH AREA. ROAD HAS ERODED AND MONUMENT WAS NOT FOUND. SET A 5/8" REBAR WITH YELLOW PLASTIC CAP #17979 12" DEEP USING TIES AND RECORDED MEASUREMENTS FROM PLAT OF SURVEY. THIS CORNER CERTIFICATE IS BEING FILED BECAUSE THE MONUMENT HAS BEEN RESET.



*All distances are measured horizontally unless noted.

I HEREBY CERTIFY THAT THIS LAND SURVEYING DOCUMENT WAS PREPARED BY ME OR UNDER MY DIRECT PERSONAL SUPERVISION AND THAT I AM A DULY LICENSED PROFESSIONAL LAND SURVEYOR UNDER THE LAWS OF THE STATE OF IOWA.

Mike Schulte
 MIKE SCHULTE
 LICENSE NUMBER: 17979
 LICENSE RENEWAL DATE IS DECEMBER 31, 2021
 PAGES COVERED BY THIS SEAL: 1 OF 1



LIST CORNERS TO BE INDEXED

CORNER	SECTION	TWP	RANGE
E1/4 COR	22	84	37
W1/4 COR	23	84	37

BASIS OF BEARING

IaRCS ZONE 6 - US SURVEY FEET
 IaRTN DERIVED - NAD83(2011)(EPOCH 2010.00)

SCHULTE SURVEYING, INC.

DRAWN BY: MLS
 PROJ NUMBER: 20-039