

2000 FEB 11 AM 10:06
INST. NO. 2000-0351
DENISE MEEVES, RECORDER
Denise Meeves
FEE #62
Mary Gitten, Deputy

INDEXED
FOLLOW UP
PROOFED

This document prepared by: Semke & Associates - 712-792-2276
Michael G. Semke, L.S.#10318 - 608 N. Court St., Carroll, Iowa

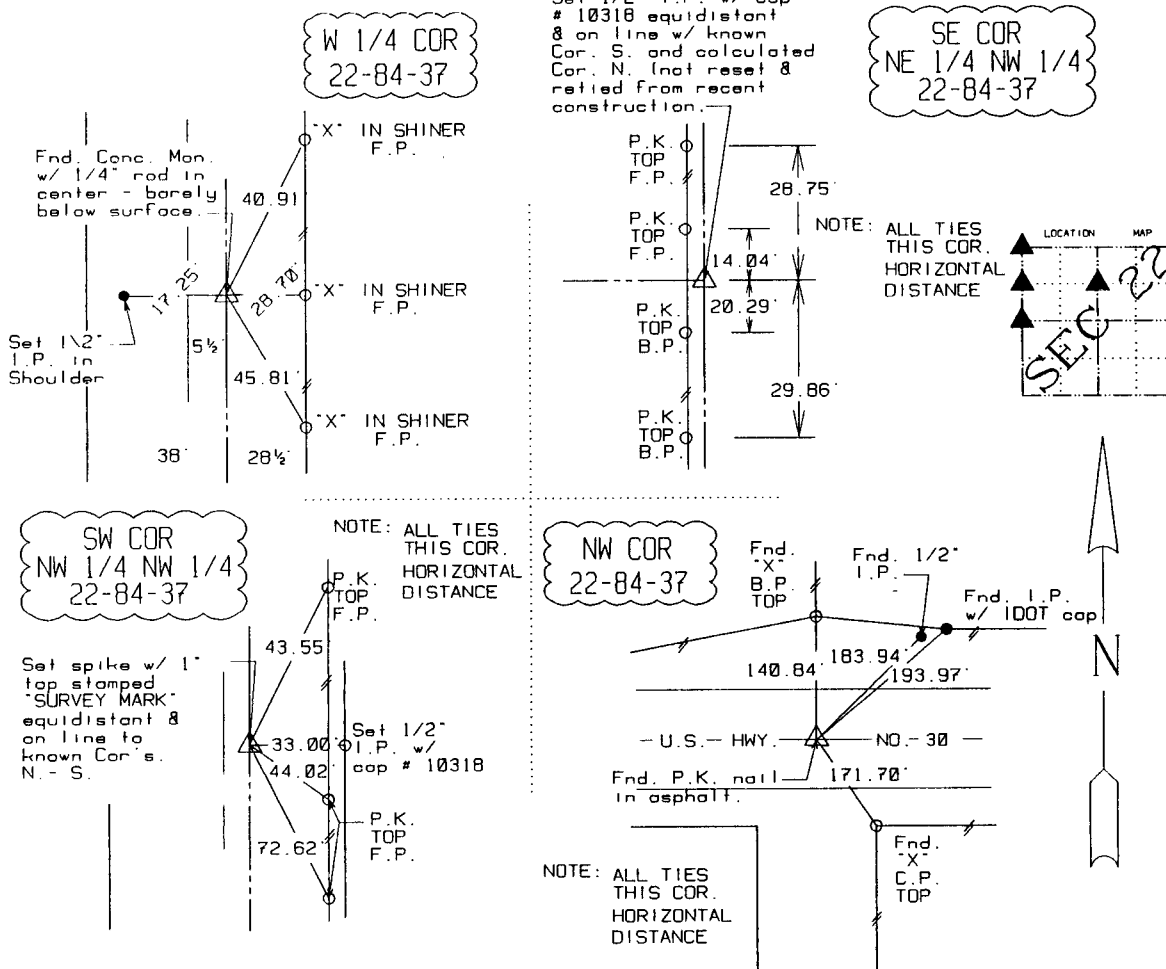
UNITED STATES PUBLIC LAND SURVEY CORNER CERTIFICATE
OF

Land Survey Monuments situated in Section 22, Township 84, Range 37, of the Fifth Principal Meridian, Crawford County, Iowa. Previously recorded in _____ in County Recorder's Office.
(book, page, document number, etc.)

(Show reason for preparing this certificate, the evidence and detailed procedures used in establishing the corner positions and monumentation found or placed.)

PLAN - VIEW

(Show a minimum of three reference ties to durable physical objects, relevant monuments and physical conditions that will enable recovery of the corner.)



Note: All ties slope chained unless noted.



I HEREBY CERTIFY THAT THIS CORNER CERTIFICATE WAS PREPARED BY ME OR UNDER MY DIRECT PERSONAL SUPERVISION AND THAT I AM A PROFESSIONAL LAND SURVEYOR UNDER THE LAWS OF THE STATE OF IOWA. MY REGISTRATION IS SUBJECT TO RENEWAL 12-31-01.

DATE: 2/10/00
MICHAEL G. SEMKE, R.L.S. NO 10318

List Corners to be Indexed			
Corners	Section	Twp	Range
W 1/4	22	84	37
E 1/4	21	84	37
NW COR	22	84	37
NE COR	21	84	37
SW COR	15	84	37
SE COR	16	84	37
SW COR	NW 1/4 NW 1/4 22	84	37
SE COR	NE 1/4 NE 1/4 21	84	37
SE COR	NE 1/4 NW 1/4 22	84	37