

Crawford County Recorder
 Denise Heeves
Fee Book 2013-0337
 02/15/2013 8:09:24AM
 PLC PLAT CORNER CER
 Book: Page: # Pages: 1
 Total Fees: \$7.00

This document prepared by: Semke & Associates - 712-792-2276
 Micheal G. Semke, L.S. #10318 - 716 N. Crawford St. - Carroll, Iowa

UNITED STATES PUBLIC LAND SURVEY CORNER CERTIFICATE of
 Land Survey Monuments situated in Section 21, Township 84 North, Range 37
 West of the Fifth Principal Meridian, Crawford County, Iowa.
 Previously referred to in Book 200-3, Page 0373 in County Recorder's Office.

(Show reason for preparing this certificate, the evidence and recovery procedures used in establishing the corner positions and monumentation found or placed.)

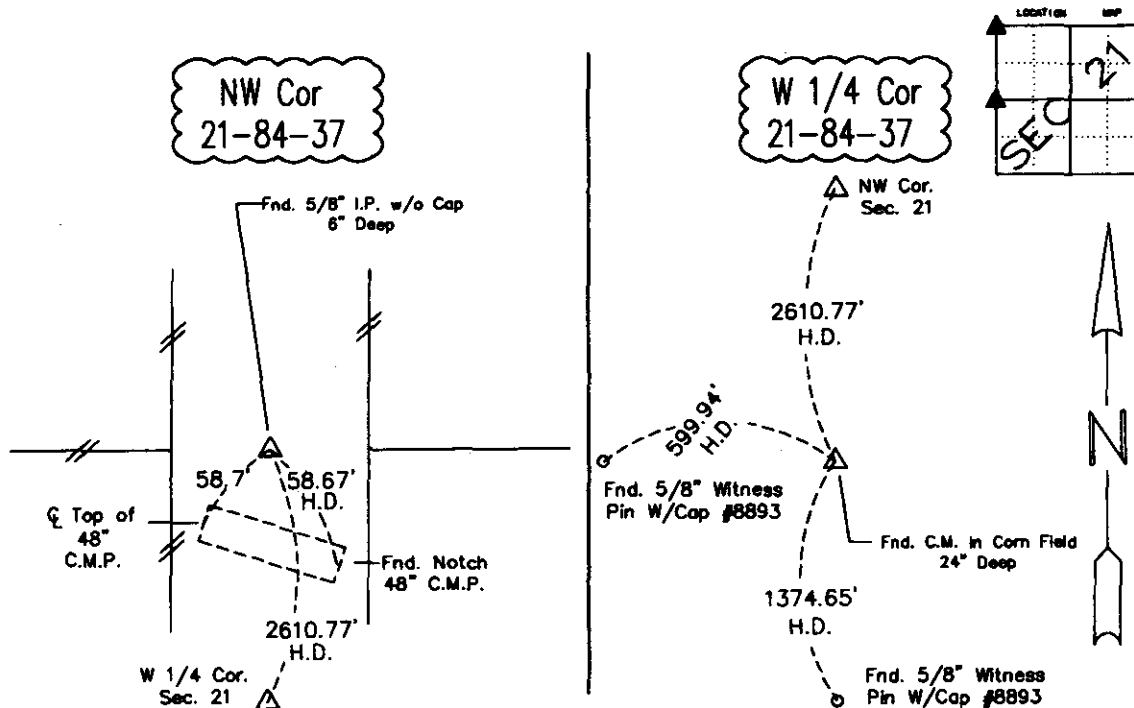
W 1/4 Corner Found Concrete Monument in Corn
Field - 24" Deep

NW Corner Found 5/8" I.P. w/o Cap - 6" Deep

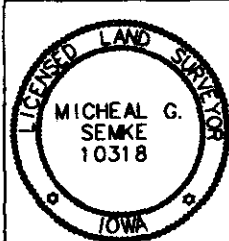
Note: All pins set are 1/2" x 24" Rerod w/Yellow Cap #10318 unless noted otherwise.

PLAN - VIEW

(Show a minimum of three reference ties to durable physical objects, relevant monuments and physical conditions that will enable recovery of the corner.)



Note: All ties slope chained unless noted otherwise - H.D. = Horz. Dist.



I HEREBY CERTIFY THAT THIS LAND SURVEYING DOCUMENT WAS PREPARED AND RELATED SURVEY WORK WAS PERFORMED BY ME OR UNDER MY DIRECT PERSONAL SUPERVISION AND THAT I AM A DULY LICENSED LAND SURVEYOR UNDER THE LAWS OF THE STATE OF IOWA.

Micheal G. Semke 2/17/13
 Signature Date

Micheal G. Semke, L.S. No. 10318

Printed of Typed Name

Pages or sheets covered by this seal THIS PAGE My license renewal date is 12/31/13.

List Corners to be Indexed

Corners	Section	Twp	Range
W 1/4 Cor	21	84	37
E 1/4 Cor	20	84	37
NW Cor	21	84	37
NE Cor	20	84	37
SE Cor	17	84	37
SW Cor	16	84	37