

INDEXED *DM/DM*
 FOLLOW UP *KM*
 PROOFED *DM*
 SCANNED *KM*

Instrument #: 2016-1563
 07/28/2016 11:11:06 AM Total Pages: 1
 PLC PLAT CORNER CER
 Recording Fee: \$0.00 Transfer Tax: \$0
 Denise Meeves, Recorder, Crawford County Iowa



PREPARED BY: PAUL ASSMAN-CRAWFORD COUNTY ENGINEER'S OFFICE-COURTHOUSE-DENISON, IA.-712-263-2449

UNITED STATES PUBLIC LAND SURVEY CORNER CERTIFICATE OF

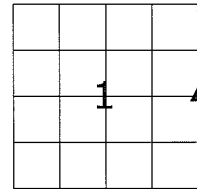
LAND SURVEY MONUMENT SITUATED IN WESTSIDE TOWNSHIP, THE EAST 1/4 CORNER OF SECTION 1, T-84N, R-37W OF THE FIFTH P.M. CRAWFORD COUNTY, IOWA.

PREVIOUSLY RECORDED AS NO. 2006-2407

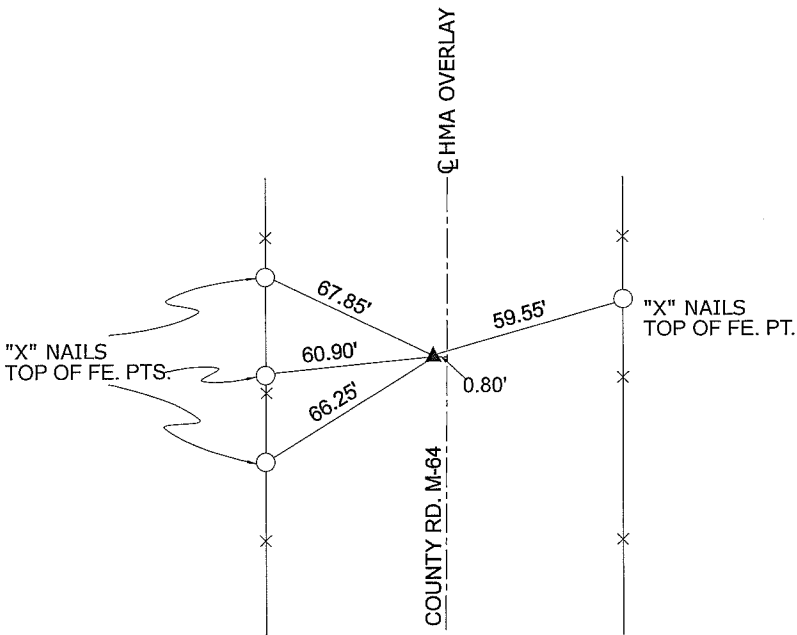
MONUMENT DESCRIPTION AND REMARKS

EAST 1/4 CORNER SEC. 1-84-37

FOUND IRON ROD 6" WEST OF CENTERLINE OF 400TH ST ACCORDING TO PREVIOUS TIES. COMPLETED HMA OVERLAY. SET CARRIAGE BOLT 0.05' DEEP OVER IRON ROD AND RETIED CORNER.



EAST 1/4 CORNER SEC. 1-84-37



ALL DISTANCES ARE PLUMB CHAINED

CERTIFICATION:

I HEREBY CERTIFY THAT THIS LAND SURVEYING DOCUMENT WAS PREPARED AND THE RELATED SURVEY WORK WAS PERFORMED BY ME OR UNDER MY DIRECT PERSONAL SUPERVISION AND THAT I AM A DULY LICENSED LAND SURVEYOR UNDER THE LAWS OF THE STATE OF IOWA.

Signature

Date of Survey

PAUL J. ASSMAN
 Typed Name

11982
 L.S. No.

12-31-16
 License Renewal Date

Pages covered by this seal 1

