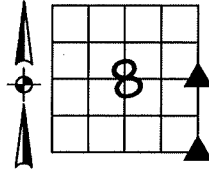


Denise Meeves RECORDER
 Crawford County, Iowa
 Instr. Number: 2021-1264
 Recorded: 6/8/2021 at 2:53:08.0 PM
 Pages 1
 County Recording Fee: \$7.00
 Iowa E-Filing Fee: \$3.13
 Combined Fee: \$10.13
 Revenue Tax:

PREPARED BY AND RETURN TO: MIKE SCHULTE, SCHULTE SURVEYING, INC., 2003 390TH STREET, WESTSIDE, IA 51467 (712) 790-3489

UNITED STATES PUBLIC LAND SURVEY CORNER CERTIFICATE OF
 LAND SURVEY MONUMENTS SITUATED IN SECTION 8, TOWNSHIP 84 NORTH, RANGE 37 WEST, OF THE FIFTH
 PRINCIPAL MERIDIAN, CRAWFORD COUNTY, IOWA. PREVIOUSLY RECORDED IN SEE BELOW IN COUNTY
 RECORDER'S OFFICE. (book, page instrument number)

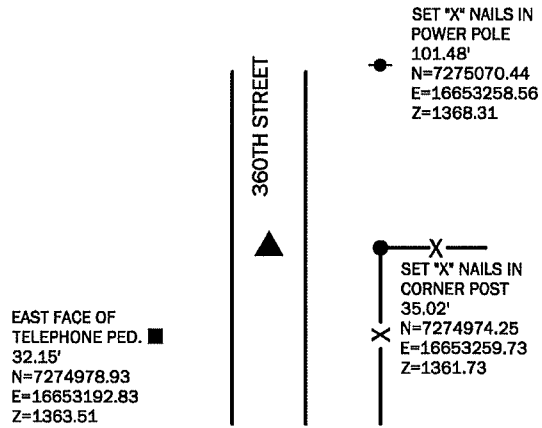
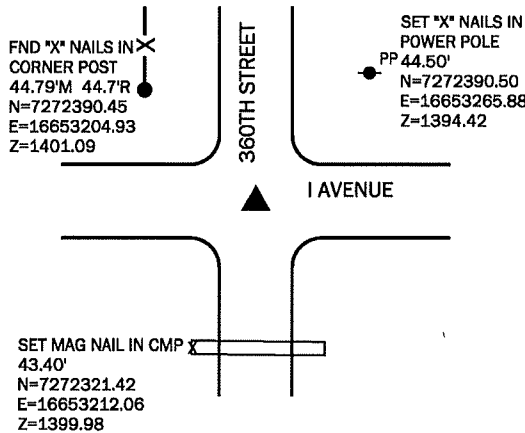


SE CORNER

FND 60D SPIKE 4" DEEP
 REPLACED WITH 5/8" REBAR YPC #17979
 N=7272357.85 E=16653235.65 Z=1399.53
 USED CERTIFICATE RECORDED IN INST. 91-0279 AND A METAL
 DETECTOR TO FIND A 60D SPIKE 4" DEEP. VERIFIED FOUND
 MONUMENT WITH 1 REMAINING TIE AND ACCEPTED AS SECTION
 CORNER. REPLACED WITH 5/8" REBAR YPC #17979.
 THIS CERTIFICATE IS BEING FILED TO UPDATE THE REFERENCE TIES.

E1/4 CORNER

FND CONCRETE MONUMENT 2.5' DEEP
 SET 5/8" REBAR YPC #17979 3" DEEP
 N=7274974.76 E=16653224.71 Z=1360.53
 USED COUNTY ENGINEER'S TIES, METAL DETECTOR, AND COUNTY
 EXCAVATOR TO FIND A CONCRETE MONUMENT 2.5' DEEP. REPLACED
 WITH 5/8" REBAR YPC #17979 3" DEEP.
 THIS CERTIFICATE IS BEING FILED BECAUSE THERE IS NO RECORDED
 CERTIFICATE.



*All distances are measured horizontally unless noted.

I HEREBY CERTIFY THAT THIS LAND SURVEYING DOCUMENT WAS
 PREPARED BY ME OR UNDER MY DIRECT PERSONAL SUPERVISION AND
 THAT I AM A DULY LICENSED PROFESSIONAL LAND SURVEYOR UNDER
 THE LAWS OF THE STATE OF IOWA.

Mike Schulte
 MIKE SCHULTE
 2021/06/08
 DATE

LICENSE NUMBER: 17979
 LICENSE RENEWAL DATE IS DECEMBER 31, 2021
 PAGES COVERED BY THIS SEAL: 1 OF 1



LIST CORNERS TO BE INDEXED

CORNER	SECTION	TWP	RANGE
E1/4 COR	8	84	37
W1/4 COR	9	84	37
SE COR	8	84	37
SW COR	9	84	37
NW COR	16	84	37
NE COR	17	84	37

BASIS OF BEARING

laRCS ZONE 6 - US SURVEY FEET
 laRTN DERIVED - NAD83(2011)(EPOCH 2010.00)