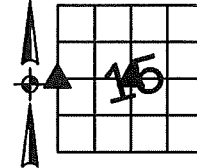


Denise Meeves RECORDER
 Crawford County, Iowa
 Instr. Number: 2022-3090
 Recorded: 12/28/2022 at 11:15:01.0 AM
 Pages 1
 County Recording Fee: \$7.00
 Iowa E-Filing Fee: \$3.13
 Combined Fee: \$10.13
 Revenue Tax:

PREPARED BY AND RETURN TO: MIKE SCHULTE, SCHULTE SURVEYING, INC., 2003 390TH STREET, WESTSIDE, IA 51467 (712) 790-3489

UNITED STATES PUBLIC LAND SURVEY CORNER CERTIFICATE OF
 LAND SURVEY MONUMENTS SITUATED IN SECTION 15, TOWNSHIP 84 NORTH, RANGE 37 WEST, OF THE FIFTH
 PRINCIPAL MERIDIAN, CRAWFORD COUNTY, IOWA. PREVIOUSLY RECORDED IN SEE BELOW IN COUNTY
(book, page instrument number)
 RECORDER'S OFFICE.

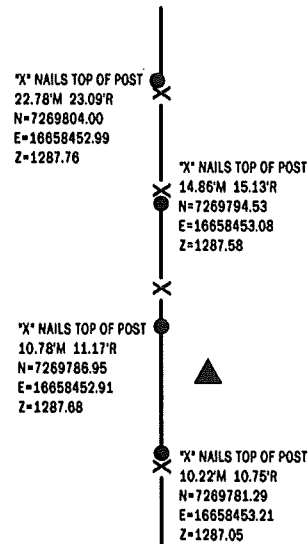
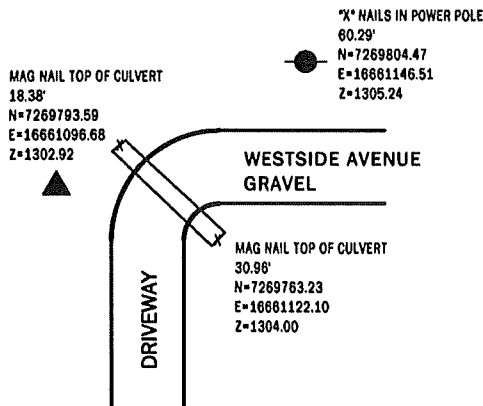


CENTER OF SECTION
 SET 5/8" REBAR YPC #17979
 N=7269775.45 E=16661093.65

SEARCHED AREA USING I.D.O.T. CERTIFICATE RECORDED IN INSTRUMENT #91-1370 AND A METAL LOCATOR, FOUND NOTHING. SET 5/8" REBAR YPC #17979 USING TIES.
 THIS CERTIFICATE IS BEING FILED BECAUSE THE MONUMENT HAS BEEN RESET.

W1/4 CORNER
 FND 1/2" REBAR
 N=7269783.61 E=16658463.17

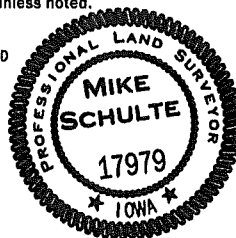
USED I.D.O.T. CERTIFICATE RECORDED IN INSTRUMENT #91-1368 AND CERTIFICATE RECORDED IN INSTRUMENT #2002-2943 TO FIND A 1/2" REBAR. VERIFIED WITH 4 REMAINING TIES.
 THIS CERTIFICATE IS BEING FILED TO UPDATE THE REFERENCE TIES.



*All distances are measured horizontally unless noted.

I HEREBY CERTIFY THAT THIS LAND SURVEYING DOCUMENT WAS PREPARED BY ME OR UNDER MY DIRECT PERSONAL SUPERVISION AND THAT I AM A DULY LICENSED PROFESSIONAL LAND SURVEYOR UNDER THE LAWS OF THE STATE OF IOWA.

Mike Schulte
 MIKE SCHULTE
 LICENSE NUMBER: 17979
 LICENSE RENEWAL DATE IS DECEMBER 31, 2023
 PAGES COVERED BY THIS SEAL: 1 OF 1



CORNER	SECTION	TWP	RANGE
CENTER OF SECTION	15	84	37
W1/4 CORNER	15	84	37
E1/4 CORNER	16	84	37

BASIS OF BEARING
 IGRCS ZONE 6 - US SURVEY FEET
 IGRTN DERIVED - NAD83(2011)(EPOCH 2010.00)

SCHULTE SURVEYING, INC.

DRAWN BY: MLS/SLG
 PROJ NUMBER: 22-087