

INDEXED SM  
 FOLLOW UP \_\_\_\_\_  
 PROOFED \_\_\_\_\_  
 SCANNED \_\_\_\_\_

Instrument #: 2016-2423  
 11/16/2016 09:03:04 AM Total Pages: 1  
 PLC PLAT CORNER CER  
 Recording Fee: \$7.00 Transfer Tax: \$0  
 Denise Meeves, Recorder, Crawford County Iowa



PREPARED BY & RETURN TO MIKE SCHULTE, SNYDER & ASSOCIATES, INC. 2003 390TH STREET, WESTSIDE, IOWA 51467 (515) 669-1019

**UNITED STATES PUBLIC LAND SURVEY CORNER CERTIFICATE OF**

Land Survey Monuments situated in Section 13, Township 84 N, Range 37 W, of the Fifth Principal Meridian, CRAWFORD, County, Iowa.  
 Previously recorded in N/A in County Recorder's Office.  
 (book, page, document number, ect.)

(Show reason for preparing this certificate, the evidence and detailed procedures used in establishing the corner positions and monumentation found or placed.)

**Monument Description and Remarks:**

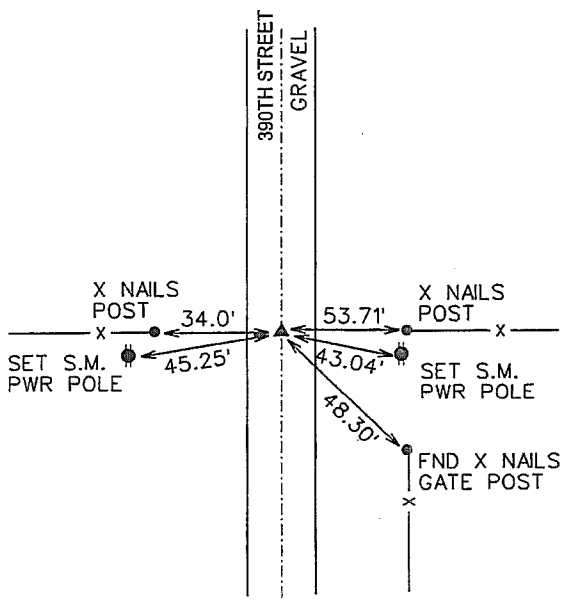
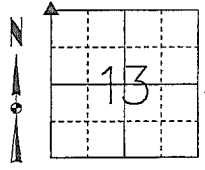
NW CORNER  
USED COUNTY ENGINEERS TIES TO FIND CONCRETE MONUMENT 3" DEEP. THIS CORNER WAS FOUND FOR A SURVEY IN THE SE1/4 OF THE NW1/4 BUT WAS NOT NEEDED. SINCE THERE ARE NO RECORDED TIES ON RECORD, THIS CORNER CERTIFICATE WAS FILED TO PERPETUATE THE CORNER.

**Plan-View**

(Show a minimum of three reference ties to durable physical objects, relevant monuments and physical conditions that will enable recovery of the corner.)

1aRCS ZONE 6; US SURVEY FT  
 NAD83(2011)(EPOCH 2010.00)  
 IOWA RTN DERIVED  
 N: 7272402.21  
 E: 16668936.86

NW CORNER  
 FND C.M. 3" DEEP



I hereby certify that this land surveying document was prepared and the related survey work was performed by me or under my direct personal supervision and that I am a duly Licensed Professional Land Surveyor under the laws of the State of Iowa.  
Mike Schulte 2016-11-08  
 Mike Schulte, PLS Date  
 License Number 17979  
 My License Renewal Date is December 31, 2017  
 Pages or sheets covered by this set:  
 SHEET 1 OF 1

List Corners to be Indexed

Corners	Section	Twp	Range
NW CORNER	13	84	37
NE CORNER	14	84	37
SE CORNER	11	84	37
SW CORNER	12	84	37