

INDEXED km/dm  
 FOLLOW UP km  
 PROOFED km  
 SCANNED km

Instrument #: 2016-1561  
 07/28/2016 11:11:06 AM Total Pages: 1  
 PLC PLAT CORNER CER  
 Recording Fee: \$0.00 Transfer Tax: \$0  
 Denise Meeves, Recorder, Crawford County Iowa



PREPARED BY: PAUL ASSMAN-CRAWFORD COUNTY ENGINEER'S OFFICE-COURTHOUSE-DENISON, IA.-712-263-2449

## UNITED STATES PUBLIC LAND SURVEY CORNER CERTIFICATE OF

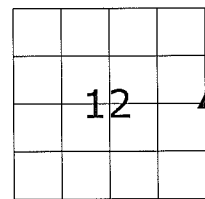
LAND SURVEY MONUMENT SITUATED IN WESTSIDE TOWNSHIP, THE EAST 1/4 CORNER OF SECTION 12, T-84N,  
R-37W OF THE FIFTH P.M. CRAWFORD COUNTY, IOWA.

PREVIOUSLY RECORDED AS NO. 99-3354

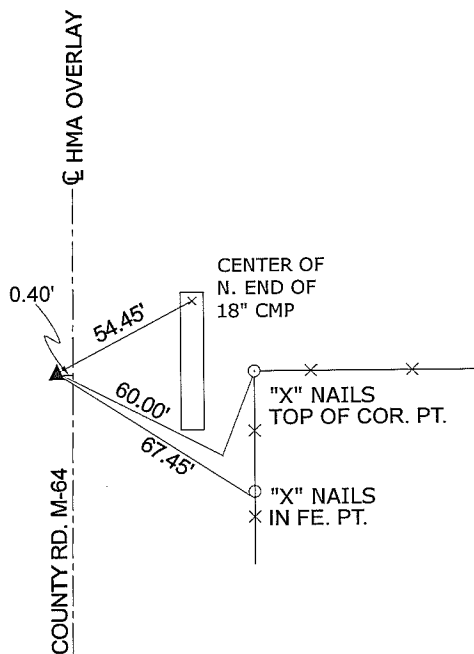
### MONUMENT DESCRIPTION AND REMARKS

EAST 1/4 CORNER SEC. 12-84-37

FOUND BOLT FLUSH WITH SURFACE WHICH WAS PREVIOUSLY SET USING CONSTRUCTION TIES FROM CONSTRUCTION PLAN RS-200(13)--61-24. COMPLETED HMA OVERLAY. SET CARRIAGE BOLT 0.05' DEEP OVER BOLT AND IN LINE WITH FENCE GOING EAST. RETIED CORNER.



EAST 1/4 CORNER SEC. 12-84-37



ALL DISTANCES ARE PLUMB CHAINED

**CERTIFICATION:**

I HEREBY CERTIFY THAT THIS LAND SURVEYING DOCUMENT WAS PREPARED AND THE RELATED SURVEY WORK WAS PERFORMED BY ME OR UNDER MY DIRECT PERSONAL SUPERVISION AND THAT I AM A DULY LICENSED LAND SURVEYOR UNDER THE LAWS OF THE STATE OF IOWA.

Paul J. Assman Signature 7/27/16 Date of Survey

PAUL J. ASSMAN Typed Name 11982 L.S. No. 12-31-16 License Renewal Date

Pages covered by this seal 1

