

5
8 N $\frac{1}{4}$ cor. Sec 8-T82N-R39W
At location indicated by Co. BK#8
page 71 found one whole brick
and a broken cog wheel $\frac{1}{2}$ ' deep
in line of N. fence.

Lowered all evidence and set
CM marked $\frac{5}{8}$
cor. Ties

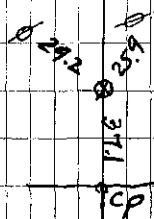
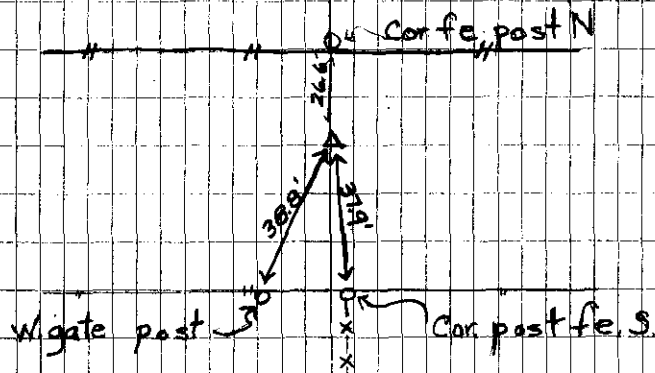
37.9 NW from x-spikes in cor. post

38.8 NE from x-spikes in W. gate post

26.6 S from x-spikes in cor. te. post N.

74
Fd & Set 4-19-40

Asst. Proj. Engr. Hughes
— Stammer —



From Plans
#60-2