

INDEXED _____
 FOLLOW UP _____
 PROOFED _____
 SCANNED _____

REC010317



Crawford County Recorder Denise Meeves
 FEE BOOK 2006-1240 5/04/2006 @ 10:55AM
 PLC PLAT CORNER CERBook: Page: #: 1
 Total Fees: \$.00

PREPARED BY: MICKAEL BERNDT
 CRAWFORD COUNTY ENGINEERS OFFICE - COURTHOUSE - DENISON, IA. - 712-263-2449

**UNITED STATES PUBLIC LAND SURVEY CORNER CERTIFICATE
 OF**

LAND SURVEY MONUMENT SITUATED IN WASHINGTON TOWNSHIP, THE NORTH 1/4
 CORNER OF SECTION 7, T-82N, R-39W OF THE 5TH P.M. CRAWFORD COUNTY, IOWA.

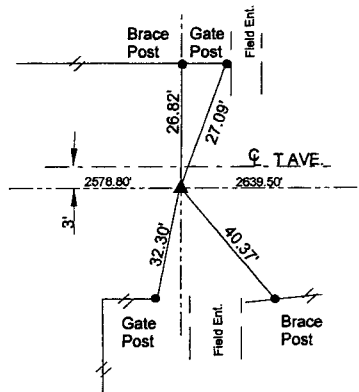
PREVIOUSLY RECORDED AS NO.

MONUMENT DESCRIPTION AND REMARKS

NORTH 1/4 CORNER SEC. 7-82-39

ACCORDING TO THE RECORDS IN THE COUNTY ENGINEERS OFFICE NO MONUMENT WAS SET AT THIS LOCATION. THE CORNER WAS ESTABLISHED USING THE OLD CHAINING NOTES AND PRORATING THE DISTANCES BETWEEN THE NORTHWEST CORNER AND THE NORTHEAST CORNER OF SECTION 7. THE OVERALL DISTANCE WAS WITHIN 1 FT. OF THE ORIGINAL CHAINING DISTANCE. THE FENCES WERE SPLIT AT THIS POINT AND A 5/8" X 14" REBAR WITH A YELLOW CAP NO.14808 WAS SET 6" DEEP AND TIED OFF.

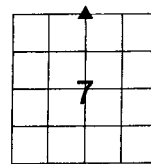
NORTH 1/4 CORNER SEC. 7-82-39



ALL DISTANCES ARE SLOPED CHAINED

All ties are "X" nails unless otherwise noted.

CORNER: NORTH 1/4
 SECTION: 7
 TOWNSHIP: 82N
 RANGE: 39W



CERTIFICATION:

I HEREBY CERTIFY THAT THIS LAND SURVEYING DOCUMENT WAS PREPARED AND THE RELATED SURVEY WORK WAS PERFORMED BY ME OR UNDER MY DIRECT PERSONAL SUPERVISION AND THAT I AM A DULY LICENSED LAND SURVEYOR UNDER THE LAWS OF THE STATE OF IOWA.

Mickael F. Berndt
 Signature

2/16/06
 Date of Survey

Mickael F. Berndt

14808

Dec. 31, 2006

Typed Name

L.S. No.

License Renewal Date

Pages covered by this seal: 1

