

65

Found Lat. hub at Surface of road Lower and Set C.M. 10d/12' fill at this place. Unable to go full depth here

TIES FROM X SPICES 20' CAR POSTS

33.5 E FROM CAR POST

57.4 SE " " REAR POLE

33.0 W " " CAR POST

39.7 NW " " 2ND POST S

31

6 ESTABLISHED COR. FROM NOTES IN

DATA 1 P^a 32 SET C.M.

LIES FROM X SPICES IN CAR POSTS

35.2 S FROM CAR POST

43.8 SE " " 2ND POST W

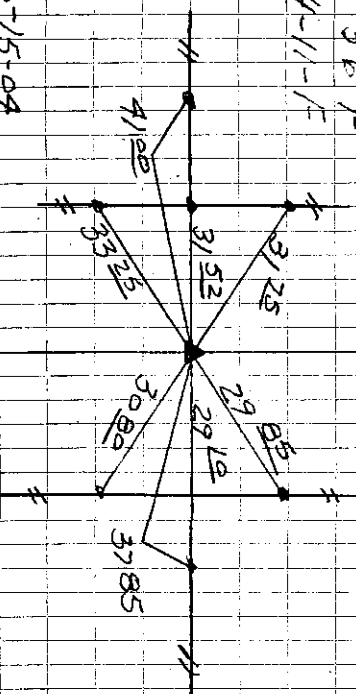
33.4 NE " " TELE POLE

22.5 N " " CAR POST

13

FOUND 12-28-39

21-56-F
14-11-F

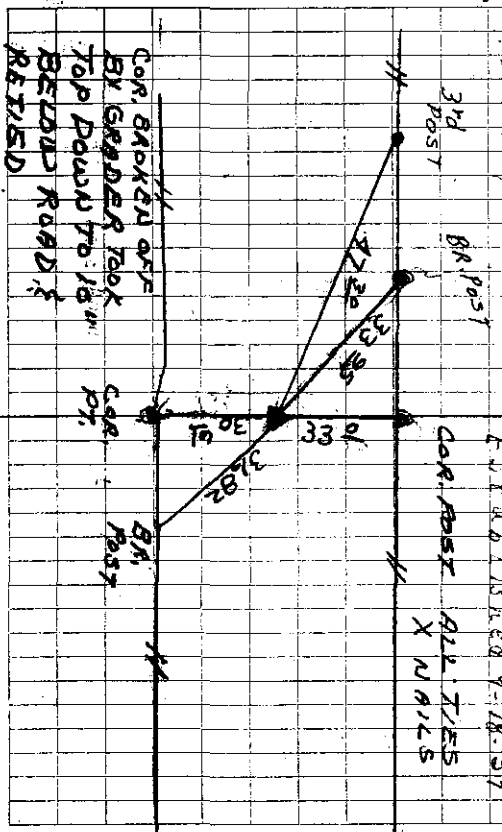


6-15-04
FOUND C.M. 12' DEEP
BERNDT, BOECK

10' DEEP

1A-2-S
14-13-F
13-26-F

ESTABLISHED 9-18-39
COR. POST ALL TIES X NAILS



COR. MARKED OFF BY GAUGER TOOL TOP DOWN TO 10" BELOW ROAD RETIRED
BARNAT, CLARK
8-15-37