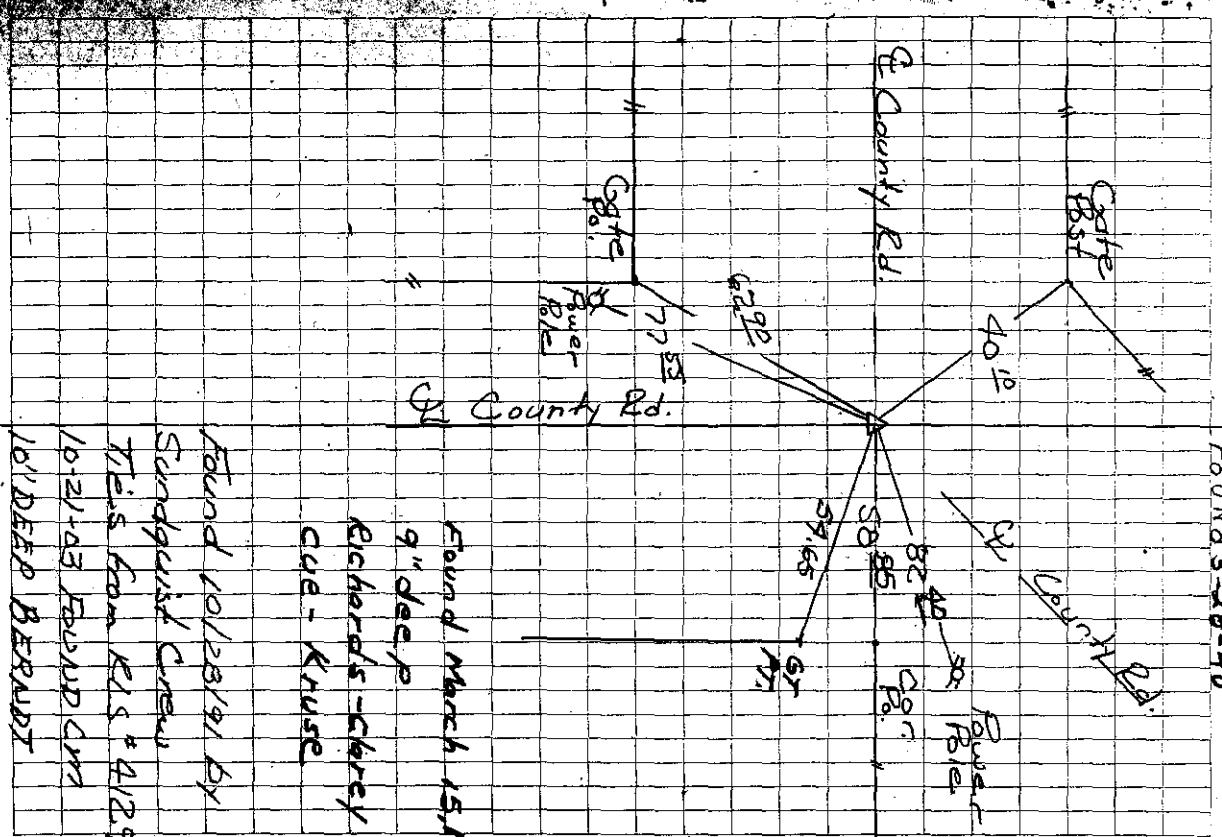


34 35
3 2

FOUND by ties from C. BK # 6 P# 118
1 ROCK 3"x 8"x 12" 1 ROCK 4"x 8"x 10"
4 small 4 wood hubs 2" dia REIN ROD 28"
long at a depth of 2', lowered and
set C.M.

Tie's from X nails
40.10 SE. from Gate Post
82.32 SW from Power Pole
58.58 W. from Corner Post
77.55 N.E. from Power Pole
63.70 N.E. from Gate Post



FOUND March 15, 1940
9" deep
Richards - Carey
CUE - KRUSE
Found 10/23/191 by
Sundquist crew
Ties from KLS # 4129
10-21-03 FOUND C.M.
10' DEEP BERARDY