

Crawford County Recorder  
 Denise Meeves  
**Fee Book 2011-1039**  
 04/29/2011 8:12:01 PM  
 PLAT CORNER CER  
 Book: Page: # Pages: 1  
 Total Fees: \$9.00

WILKE LAND SURVEYING INC. 401 1800th Street Panama, Iowa 51562 (712)489-2898

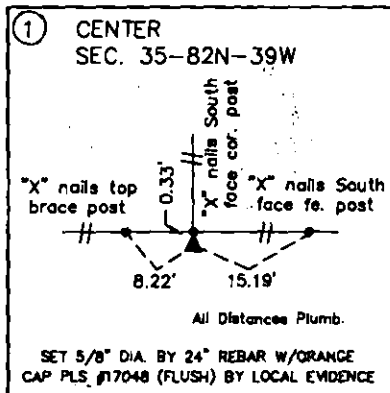
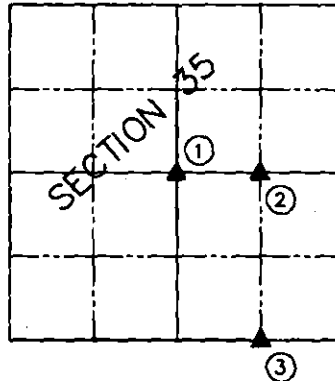
# UNITED STATES PUBLIC LAND SURVEY CORNER CERTIFICATE

SECTION 35 TOWNSHIP 82N RANGE 39W COUNTY CRAWFORD

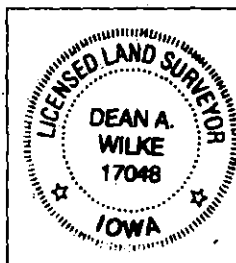
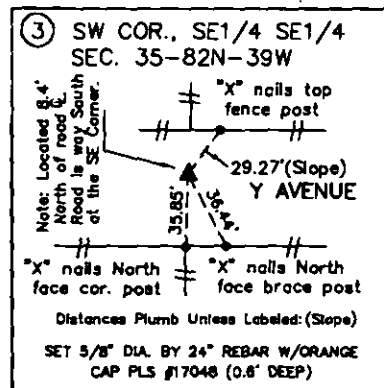
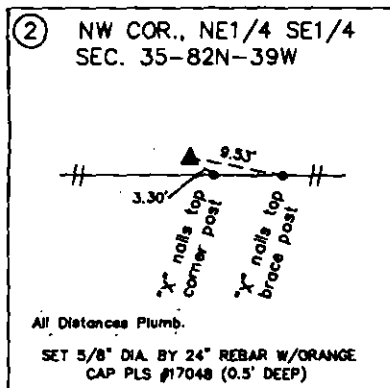
Certificate Prepared For: NO RECORD CORNER CERTIFICATES

**Monument Description and Remarks:**

- ① - Calculated a Center of Section location by intersecting lines from opposite 1/4 Section Corners but it missed the Center fence corner post by too much so I set a 5/8" dia. by 24" rebar (flush) on the South side of the old fence corner post.
- ② - Set a 5/8" dia. by 24" rebar (0.5' deep) on line between the Center and the E1/4 Corner at the midpoint.
- ③ - Set a 5/8" dia. by 24" rebar (0.6' deep) on line between the S1/4 Corner and the SE Corner and in line with the fences perpendicular to the road North and South.



List Corners to be Indexed			
Corner	Section	Twp.	Range
CENTER	35	82N	39W
NW CORNER			
NE1/4 SE1/4	35	82N	39W
SW CORNER			
SE1/4 SE1/4	35	82N	39W



I hereby certify that this land surveying document was prepared and the related survey work was performed by me or under my direct personal supervision and that I am a duly licensed Land Surveyor under the laws of the State of Iowa.

*Dean A. Wilke* 4/27/11  
 Dean A. Wilke Date

License number 17048  
 My license renewal date is December 31, 2011  
 Pages or sheets covered by this seal: This page only