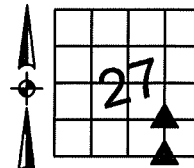


Denise Meeves RECORDER
 Crawford County, Iowa
 Instr. Number: 2022-1329
 Recorded: 5/19/2022 at 9:17:49.0 AM
 Pages 1
 County Recording Fee: \$7.00
 Iowa E-Filing Fee: \$3.13
 Combined Fee: \$10.13
 Revenue Tax:

PREPARED BY AND RETURN TO: MIKE SCHULTE, SCHULTE SURVEYING, INC., 2003 390TH STREET, WESTSIDE, IA 51467 (712) 790-3489

UNITED STATES PUBLIC LAND SURVEY CORNER CERTIFICATE OF
 LAND SURVEY MONUMENTS SITUATED IN SECTION 27, TOWNSHIP 82 NORTH, RANGE 39 WEST, OF THE FIFTH
 PRINCIPAL MERIDIAN, CRAWFORD COUNTY, IOWA. PREVIOUSLY RECORDED IN SEE BELOW IN COUNTY
(book, page instrument number)
 RECORDER'S OFFICE.

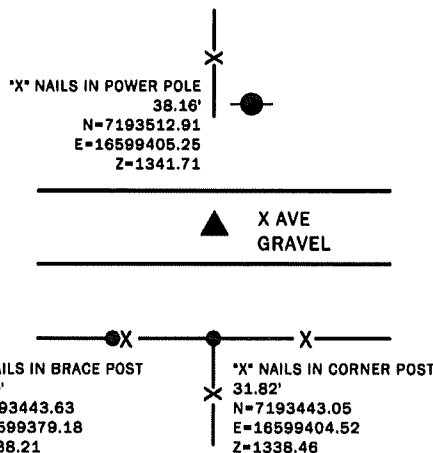
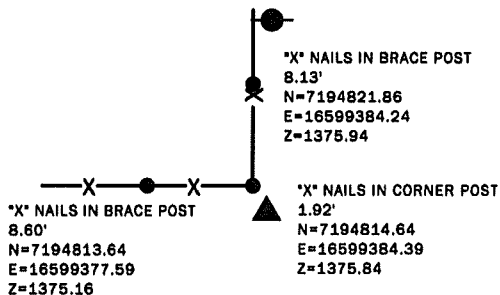


NORTHWEST CORNER SE1/4 SE1/4
 SET 5/8" REBAR YPC #17979

N=7194813.96 E=16599386.19 Z=1375.54
 USED A METAL DETECTOR TO SEARCH AREA, FOUND NOTHING. SET 5/8"
 REBAR YPC #17979 IN-LINE WITH FENCE TO WEST AND 2' EAST OF
 NORTH FENCE, IN-LINE WITH POWER POLE TO NORTH.
 THIS CERTIFICATE IS BEING FILED BECAUSE THERE IS NONE OF RECORD.

SOUTHWEST CORNER SE1/4 SE1/4
 SET 5/8" REBAR YPC #17979

N=7193474.83 E=16599402.90 Z=1324.26
 USED A METAL DETECTOR TO SEARCH AREA, FOUND NOTHING. SET 5/8"
 REBAR YPC #17979 ON-LINE BETWEEN SOUTHEAST CORNER AND
 SOUTH 1/4 CORNER AT FENCE LINES.
 THIS CERTIFICATE IS BEING FILED BECAUSE THERE IS NONE OF RECORD.



*All distances are measured horizontally unless noted.

I HEREBY CERTIFY THAT THIS LAND SURVEYING DOCUMENT WAS
 PREPARED BY ME OR UNDER MY DIRECT PERSONAL SUPERVISION AND
 THAT I AM A DULY LICENSED PROFESSIONAL LAND SURVEYOR UNDER
 THE LAWS OF THE STATE OF IOWA.

Mike Schulte
 MIKE SCHULTE
 LICENSE NUMBER: 17979
 LICENSE RENEWAL DATE IS DECEMBER 31, 2023
 PAGES COVERED BY THIS SEAL: 1 OF 1

2022/05/18
 DATE



LIST CORNERS TO BE INDEXED

CORNER	SECTION	TWP	RANGE
NW CORNER SE1/4 SE1/4	27	82	39
SW CORNER SE1/4 SE1/4	27	82	39
NW CORNER NE1/4 NE1/4	34	82	39

BASIS OF BEARING
 IARCS ZONE 8 - US SURVEY FEET
 IORTN DERIVED - NAD83(2011)(EPOCH 2010.00)

SCHULTE SURVEYING, INC.

DRAWN BY: MLS
 PROJ NUMBER: 22-025