

Instrument #: 2020-0484
 03/11/2020 09:59:20 AM Total Pages: 1
 PLC PLAT COR CERT
 Recording Fee: \$7.00 Transfer Tax: \$0
 Denise Reeves, Recorder, Crawford County Iowa



WILKE LAND SURVEYING INC. 401 1800th Street Panama, Iowa 51562 (712)489-2898

UNITED STATES PUBLIC LAND SURVEY CORNER CERTIFICATE

SECTION 34 TOWNSHIP 82N RANGE 39W COUNTY Crawford

Reason for Certificate: Survey in the NE1/4 SE1/4

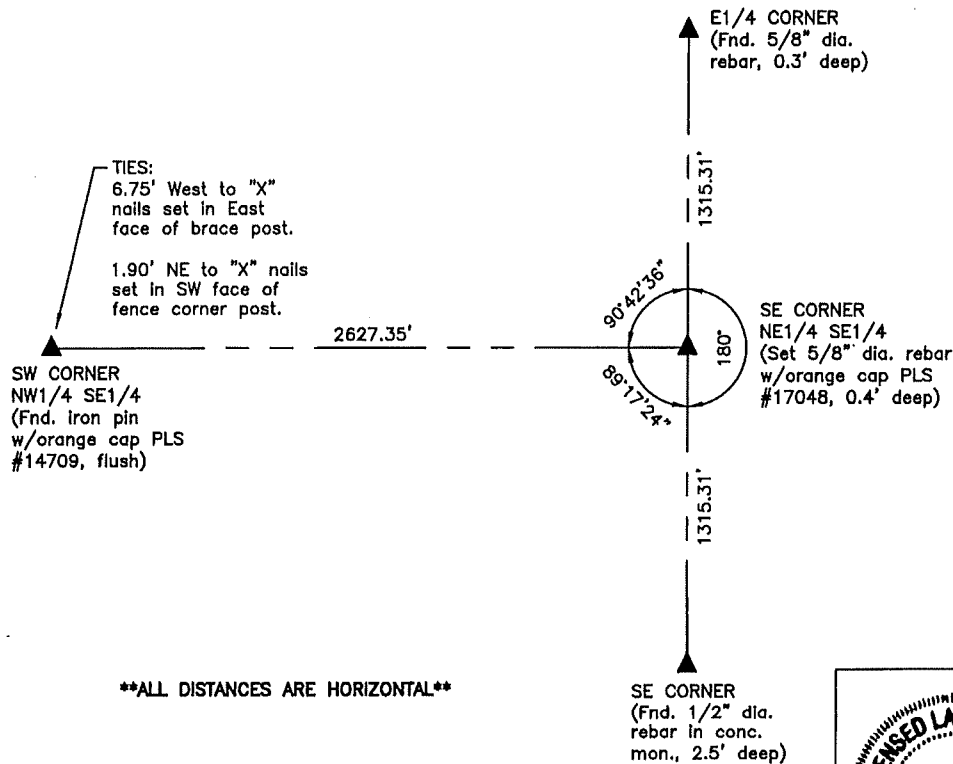
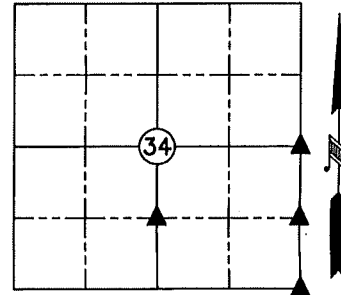
Monument Description and Remarks:

E1/4 CORNER - Found a 5/8" diameter rebar (0.3' deep).

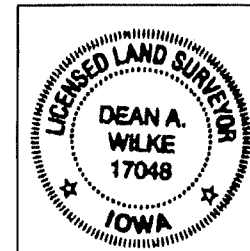
SE CORNER - Found a 1/2" diameter rebar in a concrete monument (2.5' deep). The record axle shaft over the concrete monument was disturbed by recent county road grading work and was lying almost sideways.

SW CORNER NW1/4 SE1/4 - Found an iron pin with an orange cap PLS #14709 (flush) per survey of record as Inst. No. 2008-3421 at the County Recorder's Office. No record Corner Certificate was found.

SE CORNER NE1/4 SE1/4 - Set a 5/8" diameter by 24" long rebar with an orange cap PLS #17048 (0.4' deep) at the midpoint of the East line of the SE1/4.



ALL DISTANCES ARE HORIZONTAL



| List Corners to be Indexed | | | |
|----------------------------|---------|------|-------|
| Corner | Section | Twp. | Range |
| E1/4 CORNER | 34 | 82N | 39W |
| SE CORNER | 34 | 82N | 39W |
| SW CORNER NW1/4 SE1/4 | 34 | 82N | 39W |
| SE CORNER NE1/4 SE1/4 | 34 | 82N | 39W |

I hereby certify that this land surveying document was prepared and the related survey work was performed by me or under my direct personal supervision and that I am a duly licensed Land Surveyor under the laws of the State of Iowa.

Dean A. Wilke 3/09/2020
 Dean A. Wilke Date

License number 17048

My license renewal date is December 31, 2021

Pages or sheets covered by this seal: This page only