

INDEXED
FOLLOW UP
PROOFED
SCANNED

WILKE LAND SURVEYING INC. 401 1800th Street Panama, Iowa 51562 (712)489-2898

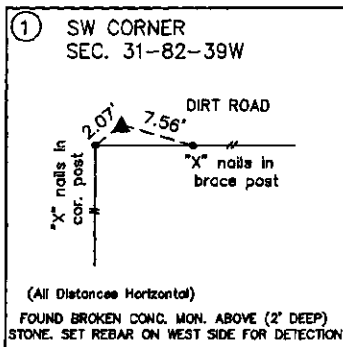
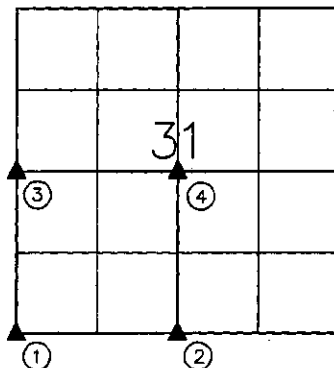
UNITED STATES PUBLIC LAND SURVEY CORNER CERTIFICATE

SECTION 31 TOWNSHIP 82N RANGE 39W COUNTY CRAWFORD

Certificate Prepared For: Survey of the NE1/4 of the Fri. SW1/4
(No Corner Certificates exist for these Corners)

Monument Description and Remarks:

- ① - Found conc. mon. with top broken off "leaning" over a 8"x12"x12" stone (2' deep). Reset conc. mon. above stone (flush) with a rebar on the West side for detection purposes.
- ② - Reset 5/8" dia. by 24" rebar w/orange cap PLS #17048 (1.2' deep) using tie information from the Crawford County Engineer's Office. The dirt road has eroded severely and the grader got the monument. The old ties are over high banks on both the North & South sides of the road.
- ③ - Found concrete monument w/brass disc (exposed 0.3') Set rebar along the West side for detection purposes.
- ④ - Set 1/4" dia. drill hole w/cut "X" in concrete road pavement on a line from the S1/4 Corner to the N1/4 Corner of Section 31 at the distance listed from the S1/4 Corner in the County Highway Easement at the County Recorder's Office. The location fit good with the center of county road East.



LICENSED LAND SURVEYOR

DEAN A. WILKE

17048

IOWA

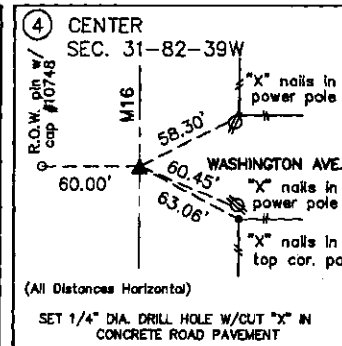
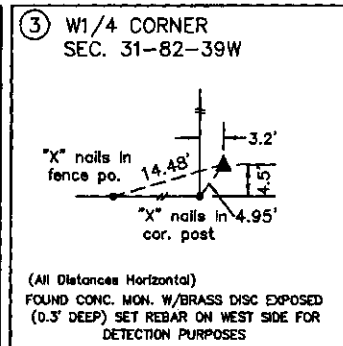
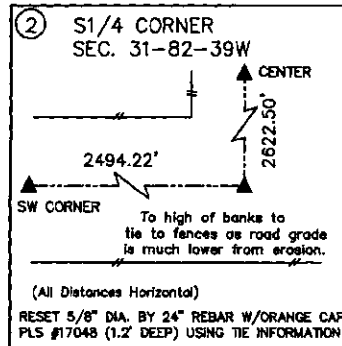
I hereby certify that this land surveying document was prepared and the related survey work was performed by me or under my direct personal supervision and that I am a duly licensed Land Surveyor under the laws of the State of Iowa.

Dean A. Wilke 8/10/09
Dean A. Wilke Date

License number 17048

My license renewal date is December 31, 2009

Pages or sheets covered by this seal: This page only



List Corners to be Indexed			
Corner	Section	Twp.	Range
SW CORNER	31	82N	39W
S1/4 CORNER	31	82N	39W
W1/4 CORNER	31	82N	39W
CENTER	31	82N	39W