

INDEXED me me
FOLLOW UP me
PROOFED _____
SCANNED _____

08/12/2008 @12:21PM
PLC PLAT CORNER CER
Book: Page: # Pages: 1
Total Fees: \$7.00

WILKE LAND SURVEYING INC. 401 1800th Street Panama, Iowa 51562 (712)489-2898

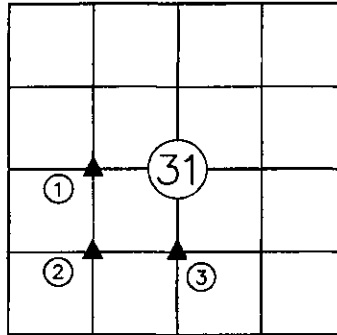
UNITED STATES PUBLIC LAND SURVEY CORNER CERTIFICATE

SECTION 31 TOWNSHIP 82N RANGE 39W COUNTY CRAWFORD

Certificate Prepared For: Survey of the NE1/4 of the Frl. SW1/4
(No Corner Certificates exist for these Corners)

Monument Description and Remarks:

- ① - Set 5/8" dia. by 24" rebar w/orange cap PLS #17048 (1.1' deep) on the North line of the Fractional SW1/4 at a proportioned distance using the original chaining notes.
- ② - Set 5/8" dia. by 24" rebar w/orange cap PLS #17048 (0.3' deep) at the intersection of lines from the midpoint of the East line to the midpoint of the West line of the Frl. SW1/4 and from the calculated SW Corner of the SE1/4 of the Frl. SW1/4 to the "Set" NW Corner of the NE1/4 of the Frl. SW1/4.
- ③ - Set 1/4" dia. drill hole w/cut "X" in concrete road pavement at the midpoint of the East line of the Frl. SW1/4.



LICENSED LAND SURVEYOR

DEAN A. WILKE

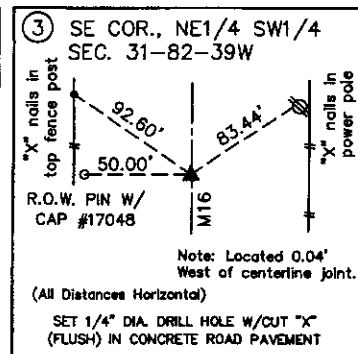
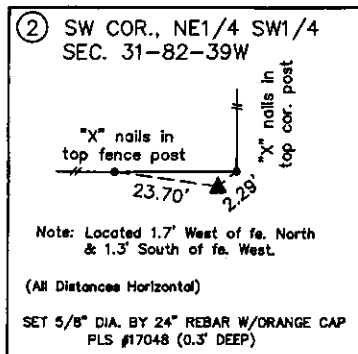
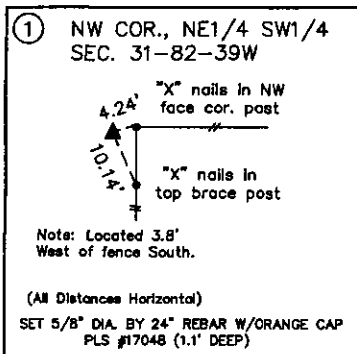
17048

IOWA

I hereby certify that this land surveying document was prepared and the related survey work was performed by me or under my direct personal supervision and that I am a duly licensed Land Surveyor under the laws of the State of Iowa.

Dean A. Wilke 8/10/08
Dean A. Wilke Date

License number 17048
My license renewal date is December 31, 2009
Pages or sheets covered by this seal: This page only



List Corners to be Indexed				
Corner	Section	Twp.	Range	
NW CORNER, NE1/4 FRL. SW1/4	31	82N	39W	
SW CORNER, NE1/4 FRL. SW1/4	31	82N	39W	
SE CORNER, NE1/4 FRL. SW1/4	31	82N	39W	