

Instrument #: 2023-1177
 06/30/2023 10:27:09 AM Total Pages: 1
 PLC PLAT COR CERT
 Recording Fee: \$7.00 Transfer Tax: \$0
 Sara Meseck, Recorder, Crawford County Iowa



WILKE LAND SURVEYING INC. 401 1800th Street Panama, Iowa 51562 (712)489-2898

UNITED STATES PUBLIC LAND SURVEY CORNER CERTIFICATE

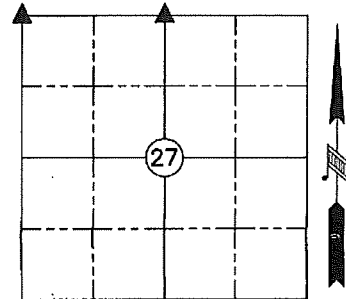
SECTION 27 TOWNSHIP 82N RANGE 39W COUNTY Crawford

Reason for Certificate: Survey in the NE1/4 NE1/4

Monument Description and Remarks:

NW CORNER - Found a broken off concrete monument (2.0' deep). Placed a 5/8" diameter rebar along the East side of the monument for detection purposes only. Set a 5/8" diameter by 1.4' long rebar with an orange cap PLS #17048 above said monument (0.4' deep).

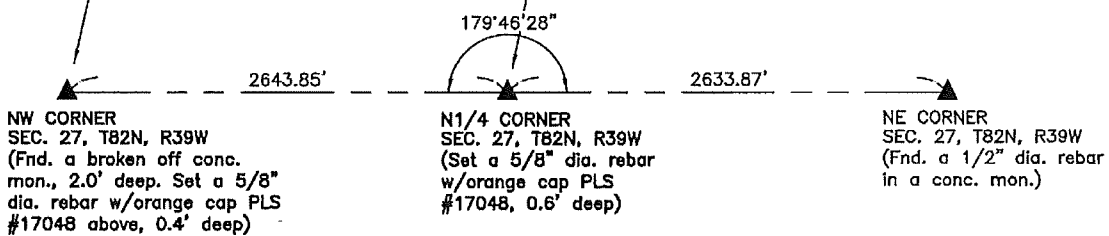
N1/4 CORNER - Set a 5/8" diameter by 24" long rebar with an orange cap PLS #17048 (0.6' deep) on the physical centerline of W Avenue and in line with a remaining corner and brace post of a fence North (fence beyond has been removed). The set monument is 5.20' South of a straight line from the NW Corner to the NE Corner of Section 27.



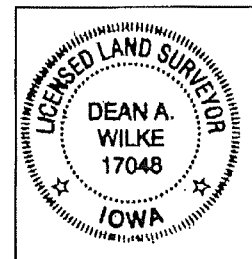
TIES:
 40.04' NW to "X" nails in the top of the R.O.W. fence corner post.
 45.87' SW to "X" nails in the NE face of the R.O.W. fence corner post.
 57.34' SE to "X" nails in the NW face of a power pole.
 ±4.5' West of the physical road centerline North.
 ±5.5' North of the physical East/West road centerline.

NOTE:
 See my survey in the NE1/4 NE1/4 for additional information.

TIES:
 26.36' North to "X" nails in the South face of a remaining corner post in the R.O.W. fence.
 36.04' SE to the top center of a telephone pedestal.



ALL DISTANCES ARE HORIZONTAL



List Corners to be Indexed			
Corner	Section	Twp.	Range
NW CORNER	27	82N	39W
N1/4 CORNER	27	82N	39W

I hereby certify that this land surveying document was prepared and the related survey work was performed by me or under my direct personal supervision and that I am a duly licensed Land Surveyor under the laws of the State of Iowa.

Dean A. Wilke 6/28/23
 Dean A. Wilke Date

License number 17048

My license renewal date is December 31, 2023

Pages or sheets covered by this seal: This page only