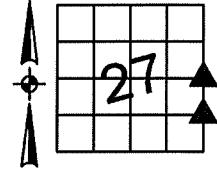


Denise Meeves RECORDER
 Crawford County, Iowa
 Instr. Number: 2022-1328
 Recorded: 5/19/2022 at 9:17:49.0 AM
 Pages 1
 County Recording Fee: \$7.00
 Iowa E-Filing Fee: \$3.13
 Combined Fee: \$10.13
 Revenue Tax:

PREPARED BY AND RETURN TO: MIKE SCHULTE, SCHULTE SURVEYING, INC., 2003 390TH STREET, WESTSIDE, IA 51467 (712) 790-3489

UNITED STATES PUBLIC LAND SURVEY CORNER CERTIFICATE OF
 LAND SURVEY MONUMENTS SITUATED IN SECTION 27, TOWNSHIP 82 NORTH, RANGE 39 WEST, OF THE FIFTH
 PRINCIPAL MERIDIAN, CRAWFORD COUNTY, IOWA. PREVIOUSLY RECORDED IN SEE BELOW IN COUNTY
(book, page instrument number)
 RECORDER'S OFFICE.

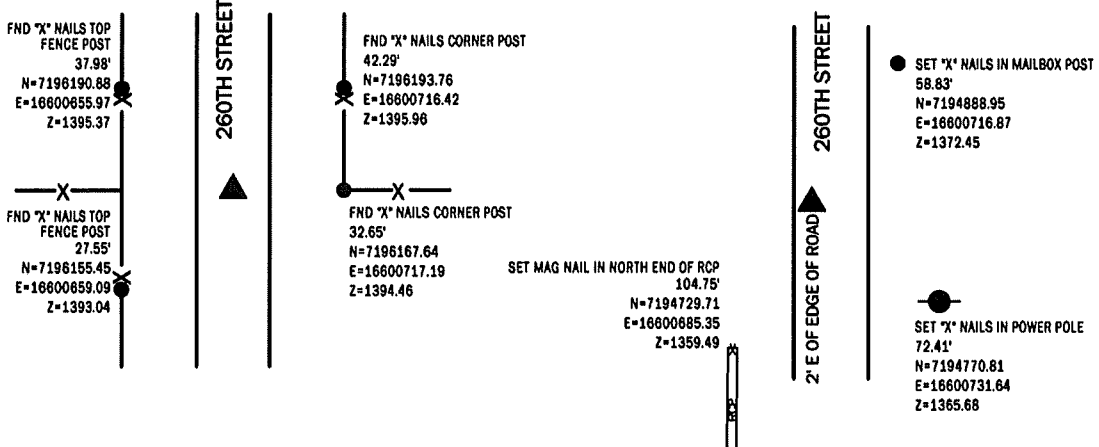


EAST 1/4 CORNER
 FND 1/2" REBAR 6" DEEP

N=7196165.91 E=16600684.59 Z=1392.32
 USED ENGINEER'S TIES AND A METAL DETECTOR TO FIND A 1/2" REBAR
 6" DEEP. VERIFIED WITH SURROUNDING FIELD EVIDENCE AND
 ACCEPTED AS SECTION CORNER.
 THIS CERTIFICATE IS BEING FILED BECAUSE THERE IS NONE OF RECORD.

NORTHEAST CORNER SE1/4 SE1/4
 SET 5/8" REBAR YPC #17979

N=7194833.90 E=16600696.10 Z=1324.26
 USED A METAL DETECTOR TO SEARCH AREA, FOUND NOTHING. SET 5/8"
 REBAR YPC #17979 3" DEEP BY SINGLE PROPORTION.
 THIS CERTIFICATE IS BEING FILED BECAUSE THERE IS NONE OF RECORD.



LIST CORNERS TO BE INDEXED

CORNER	SECTION	TWP	RANGE
E1/4 CORNER	27	82	39
W1/4 CORNER	26	82	39
NE CORNER SE1/4 SE1/4	27	82	39
NW CORNER SW1/4 SW1/4	26	82	39

*All distances are measured horizontally unless noted.

I HEREBY CERTIFY THAT THIS LAND SURVEYING DOCUMENT WAS
 PREPARED BY ME OR UNDER MY DIRECT PERSONAL SUPERVISION AND
 THAT I AM A DULY LICENSED PROFESSIONAL LAND SURVEYOR UNDER
 THE LAWS OF THE STATE OF IOWA.

Mike Schulte
 MIKE SCHULTE
 LICENSE NUMBER: 17979
 LICENSE RENEWAL DATE IS DECEMBER 31, 2023
 PAGES COVERED BY THIS SEAL: 1 OF 1



BASIS OF BEARING

toRCS ZONE 6 - US SURVEY FEET
 toRTN DERIVED - NAD83(2011)(EPOCH 2010.00)

SCHULTE SURVEYING, INC.

DRAWN BY: MLS
 PROJ NUMBER: 22-025