

Instrument #: 2023-1178
 06/30/2023 10:27:09 AM Total Pages: 1
 PLC PLAT COR CERT
 Recording Fee: \$7.00 Transfer Tax: \$0
 Sara Meseck, Recorder, Crawford County Iowa



WILKE LAND SURVEYING INC. 401 1800th Street Panama, Iowa 51562 (712)489-2898

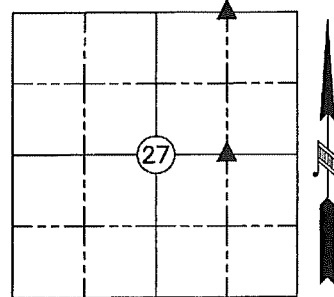
UNITED STATES PUBLIC LAND SURVEY CORNER CERTIFICATE

SECTION 27 TOWNSHIP 82N RANGE 39W COUNTY Crawford

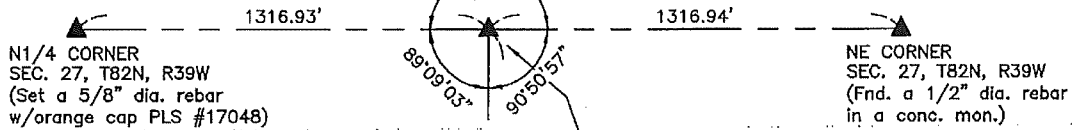
Monument Description and Remarks: _____ Reason for Certificate: Survey in the NE1/4 NE1/4

NW CORNER NE1/4 NE1/4 - Set a 5/8" diameter by 24" long rebar with an orange cap PLS #17048 (0.6' deep) at the midpoint of the North line of the Northeast Quarter. The set monument fits well with the physical centerline of W Avenue.

SW CORNER SE1/4 NE1/4 - Set a 5/8" diameter by 24" long rebar with an orange cap PLS #17048 (flush) along the Northwest side of a corner post with fences East, South, and Northwest.



NW CORNER
 NE1/4 NE1/4
 SEC. 27, T82N, R39W
 (Set a 5/8" dia. rebar
 w/orange cap PLS
 #17048, 0.6' deep)



N1/4 CORNER
 SEC. 27, T82N, R39W
 (Set a 5/8" dia. rebar
 w/orange cap PLS #17048)

NE CORNER
 SEC. 27, T82N, R39W
 (Fnd. a 1/2" dia. rebar
 in a conc. mon.)

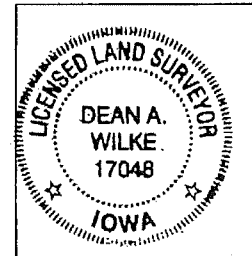
TIES:
 45.48' SW to "X" nails in the NE face of a brace post in the R.O.W. fence.
 39.82' SW to "X" nails in the NE face of the end post of the R.O.W. fence.
 33.00' South to 5/8" dia. rebar w/orange cap PLS #17048 as a R.O.W. Corner monument.

****ALL DISTANCES ARE HORIZONTAL****

NOTE:
 See my survey in the NE1/4 NE1/4 for additional information.

TIE:
 ±0.4' SE to the NW corner of a R.R. tie corner post with fences East, South, & Northwest. Said fence corner post is leaning East/Southeast.

SW CORNER
 SE1/4 NE1/4
 SEC. 27, T82N, R39W
 (Set a 5/8" dia. rebar
 w/orange cap PLS
 #17048, flush)



List Corners to be Indexed			
Corner	Section	Twp.	Range
NW CORNER NE1/4 NE1/4	27	82N	39W
SW CORNER SE1/4 NE1/4	27	82N	39W

I hereby certify that this land surveying document was prepared and the related survey work was performed by me or under my direct personal supervision and that I am a duly licensed Land Surveyor under the laws of the State of Iowa.

Dean A. Wilke 6/28/23
 Dean A. Wilke Date

License number 17048

My license renewal date is December 31, 2023

Pages or sheets covered by this seal: This page only