


INDEXED mg
 FILED UP _____
 PROOFED _____
 SCANNED _____

00 
 Crawford County Recorder Denise Meeves
 Fee Book 2007-0946 REC014090
 04/11/2007 8:12:7AM # Pages 1
 PLC PLAT CORNER CER
 Total Fees: \$7.00

WILKE LAND SURVEYING INC. 401 1800th Street Panama, Iowa 51562 (712)489-2898

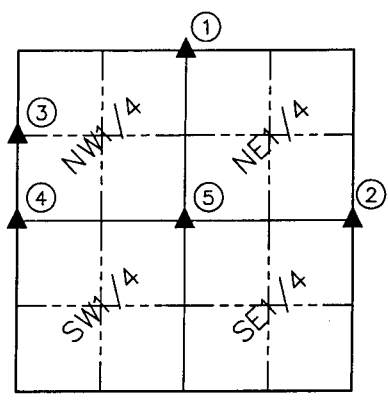
UNITED STATES PUBLIC LAND SURVEY CORNER CERTIFICATE

SECTION 30 TOWNSHIP 82N RANGE 38W COUNTY CRAWFORD

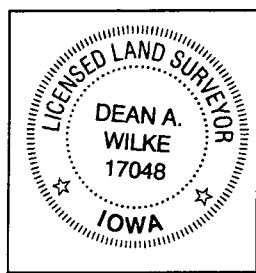
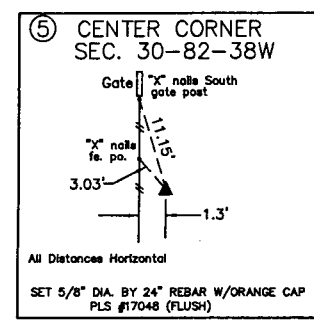
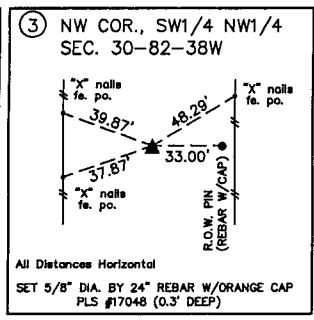
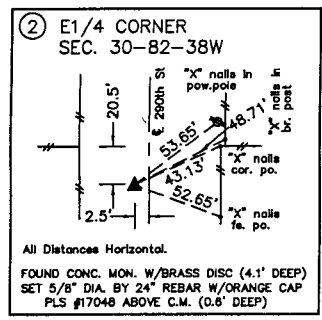
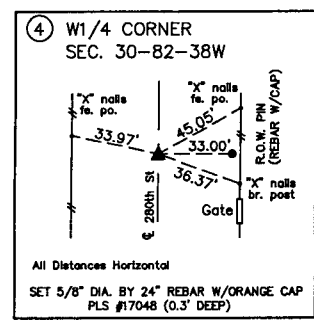
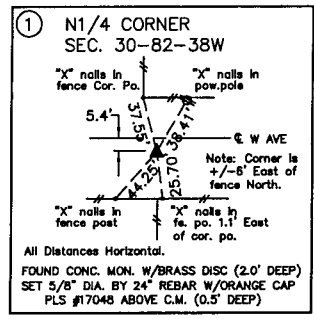
Certificate Prepared For: Survey of the North & South lines of the
S1/2 NW1/4 of Section 30

Monument Description and Remarks:

- ① - Found conc. mon. w/brass disc (2.0' deep) using reference information from the County Engineer's Office. Set rebar along the North edge for detection purposes only. Set 5/8" dia. by 15" rebar w/orange cap PLS #17048 above at (0.5' deep)
- ② - Found conc. mon. w/brass disc (4.1' deep) using 1941 chaining notes from the County Engineer's Office. Set rebar along the North edge for detection purposes. Set 5/8" by 24" rebar w/orange cap PLS #17048 above conc. mon. at (0.6' deep)
- ③ - Set 5/8" by 24" rebar w/orange cap PLS #17048 on line at the midpoint between the Northwest Corner and the W1/4 Corner of Section 30.
- ④ - No record of monument being set at this corner in 1941. Searched with metal detector and found nothing. Set 5/8" dia by 24" rebar at split of road right-of-way fences and equal distances from the Northwest Corner and Southwest Corner of Section 30.
- ⑤ - Set 5/8" dia by 24" rebar w/orange cap PLS #17048 (flush) at intersection point of lines connecting opposite 1/4 Corners.



| List Corners to be Indexed | | | |
|----------------------------|---------|------|-------|
| Corner | Section | Twp. | Range |
| N1/4 CORNER | 30 | 82N | 38W |
| E1/4 CORNER | 30 | 82N | 38W |
| NW CORNER | | | |
| SW1/4 NW1/4 | 30 | 82N | 38W |
| CENTER CORNER | 30 | 82N | 38W |



I hereby certify that this land surveying document was prepared and the related survey work was performed by me or under my direct personal supervision and that I am a duly licensed Land Surveyor under the laws of the State of Iowa.

Dean A. Wilke 4/10/07
 Dean A. Wilke /Date

License number 17048
 My license renewal date is December 31, 2007
 Pages or sheets covered by this seal: This page only