

Denise Meeves RECORDER  
 Crawford County, Iowa  
 Instr. Number: 2021-2687  
 Recorded: 11/17/2021 at 11:07:25.0 AM  
 Pages 1  
 County Recording Fee: \$7.00  
 Iowa E-Filing Fee: \$3.13  
 Combined Fee: \$10.13  
 Revenue Tax:

PREPARED BY: DGR ENGINEERING, 1302 S. UNION STREET, P.O. BOX 511, ROCK RAPIDS, IOWA 51246 (712) 472-2531

UNITED STATES PUBLIC LAND SURVEY CORNER CERTIFICATE  
 OF

Land Survey Monuments situated in Section 13, Township 82 Range 39  
 of the Fifth Principal Meridian, CRAWFORD County, Iowa.

Previously recorded in SE=NO PREVIOUS RECORDINGS; S1/4=INSTRUMENT NO. 2018-1750 in County Recorder's Office.

(Show reason for preparing this certificate, the evidence and detailed procedures used in establishing the corner positions and monumentation found or placed.)

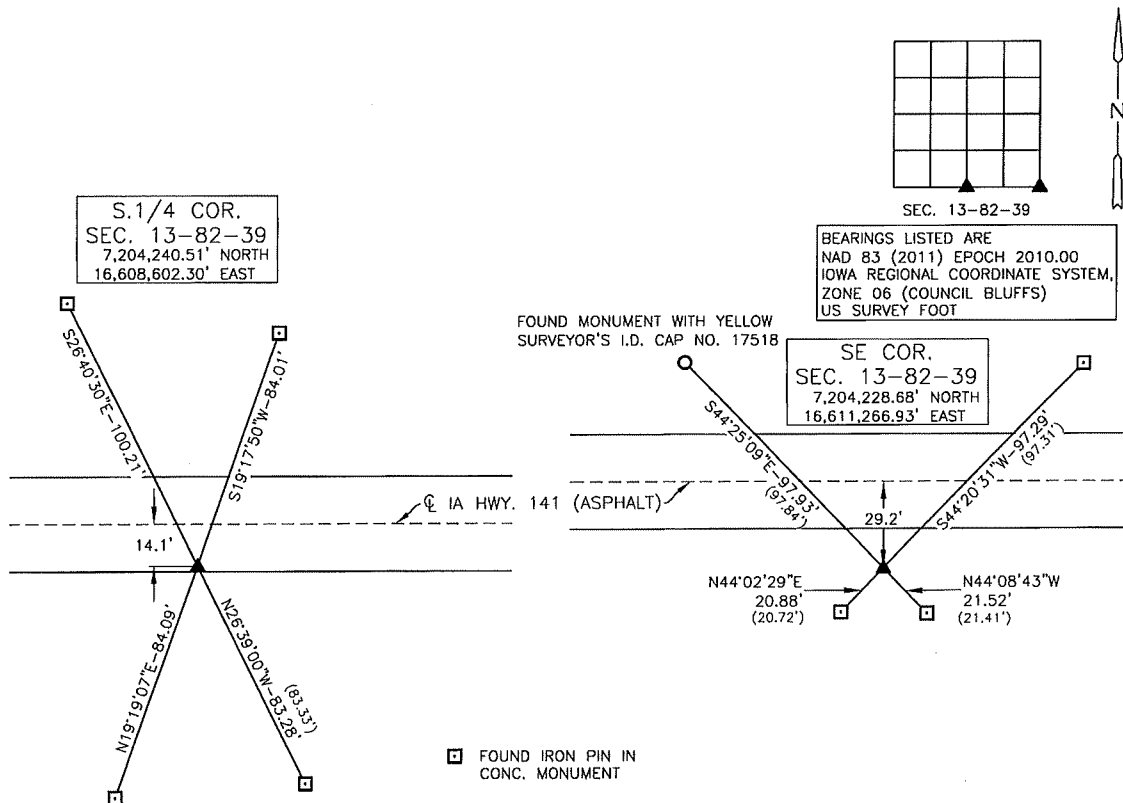
Monument Description and Remarks: FOR SURVEY IN THE SE1/4 SECTION 13-82-39

SE CORNER - FOUND 1/2" DIA. REBAR IN CONCRETE. MONUMENT MATCHES COUNTY ENGINEER RECORDS.

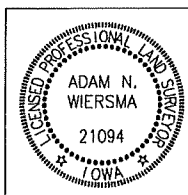
S.1/4 CORNER - MONUMENT OVERLAID WITH ASPHALT BY ROAD CONSTRUCTION. STRONG MAGNETIC READING AT PREVIOUS CORNER  
 CERTIFICATE LOCATION. SET 1' DIA. STEEL MONUMENT STAMPED "MAG SPIKE" IN ASPHALT USING PREVIOUS CORNER  
 CERTIFICATE TIES.

PLAN - VIEW

(Show a minimum of three reference ties to durable physical objects, relevant monuments and physical conditions that will enable recovery of the corner.)



ALL DISTANCES SHOWN ARE HORIZONTAL



I hereby certify that this land surveying document was prepared and the related survey work was performed by me or under my direct personal supervision and that I am a duly Licensed Land Surveyor under the laws of the State of Iowa.  
 By: *Adam Wiersma* 11-17-21  
 Adam N. Wiersma, L.S. License No. 21094 (Date)  
 My license renewal date is December 31, 2021  
 Sheets covered by this seal: THIS SHEET ONLY

List Corners to be Indexed			
CORNER	SECTION	TWP	RANGE
SE COR.	13	82	39
S.1/4 COR.	13	82	39