


INDEXED
 FOLLOW UP
 PREPARED
 SCANNED

□ 
 Crawford County Recorder Denise Meeves
 Fee Book 2007-1627 REC014835
 06/15/2007 8:11:28AM # Pages 1
 PLC PLAT CORNER CER
 Total Fees: \$0.00

PREPARED BY: MICKAEL F. BERNDT - CRAWFORD COUNTY ENGINEER'S OFFICE - COURTHOUSE - DENISON, IA. - 712-263-2449

**UNITED STATES PUBLIC LAND SURVEY CORNER CERTIFICATE
 OF
 LAND SURVEY MONUMENT SITUATED IN WASHINGTON TOWNSHIP, THE SW CORNER
 OF SECTION 16, T-82N, R-39W OF THE FIFTH P.M. CRAWFORD COUNTY, IOWA.**

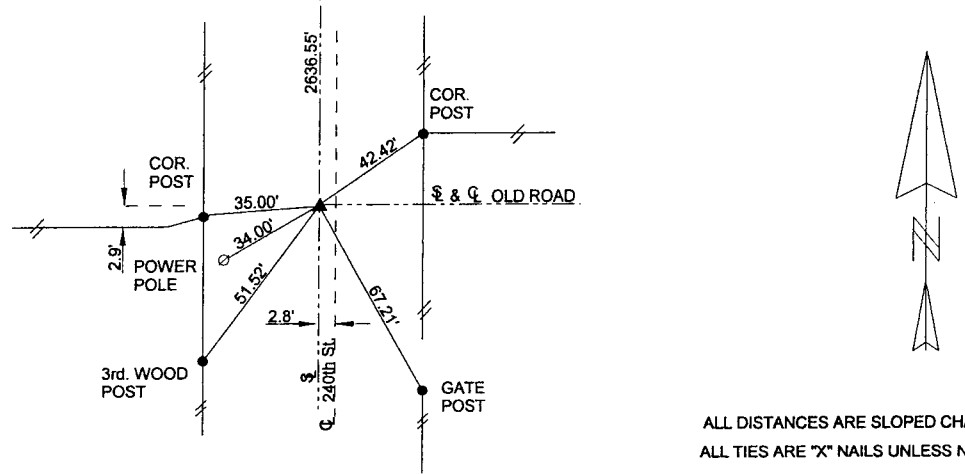
PREVIOUSLY RECORDED AS NO.

MONUMENT DESCRIPTION AND REMARKS

SW CORNER SEC. 16-82-39

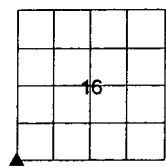
DUG FOR CORNER DID NOT FIND.
 ACCORDING TO OLD COUNTY ROAD PROJECT L-18 THE ORIGINAL CORNER WAS CUT OUT WHEN THE ROAD WAS GRADED IN 1938. USING THE PLAN AND THE ORIGINAL FIELD BOOK THE CORNER WAS SET AT THE SAME DISTANCE AS THE DISTANCE BETWEEN THE W1/4 CORNER AND THE NW CORNER AND AT A SPLIT OF THE FENCES EAST AND WEST. THIS AGREES WITH THE 1938 ROAD PLAN. SET 5/8" X 14" REBAR 8" DEEP WITH YELLOW CAP NO. 14808.

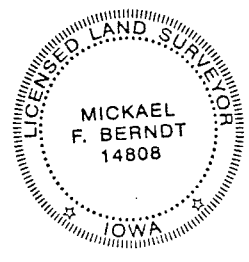
SW CORNER SEC. 16-82-39



ALL DISTANCES ARE SLOPED CHAINED
 ALL TIES ARE "X" NAILS UNLESS NOTED.

CORNER: SOUTHWEST
 SECTION: 16
 TOWNSHIP: 82N
 RANGE: 39W



CERTIFICATION: I HEREBY CERTIFY THAT THIS LAND SURVEYING DOCUMENT WAS PREPARED AND THE RELATED SURVEY WORK WAS PERFORMED BY ME OR UNDER MY DIRECT PERSONAL SUPERVISION AND THAT I AM A DULY LICENSED LAND SURVEYOR UNDER THE LAWS OF THE STATE OF IOWA.			
<i>Michael F. Berndt</i> Signature	6-15-07 Date of Survey		
MICKAEL F. BERNDT Typed Name	14808 I. S. No.	Dec. 31, 2008 License Renewal Date	
Pages covered by this seal <u>1</u>			