

SCANNED

PREPARED BY - TERENCE E. CRAWFORD - SUNDUQUIST ENGINEERING - 120 S. MAIN, DENISON, IOWA 51442 - PHONE (712) 263-8118

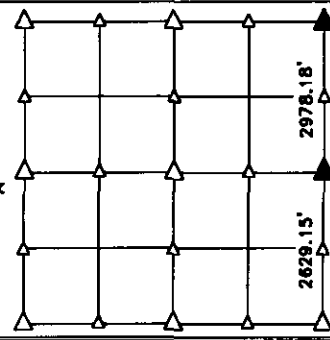
**UNITED STATES PUBLIC LAND SURVEY CORNER CERTIFICATE
OF**

LAND SURVEY MONUMENT SITUATED IN SECTION 1, T 82 N, R 39 W OF
THE 5TH P.M., CRAWFORD COUNTY, IOWA.
PREVIOUSLY RECORDED IN BOOK , PAGE , OTHER

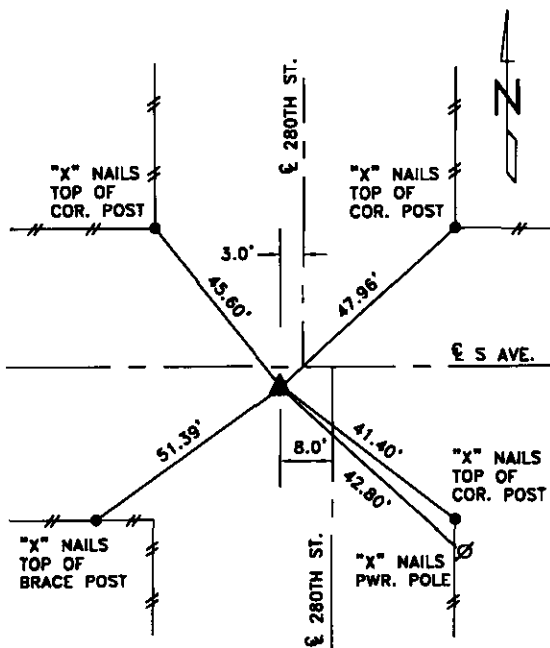
MONUMENT DESCRIPTION AND REMARKS

NE CORNER - FOUND 5/8" DIA. IRON PIN 10" DEEP, APPROX. 1.5' SO. OF CENTERLINE OF E-W ROAD.

E1/4 CORNER - SET 5/8" DIA. X 18" IRON PIN W/YELLOW CAP #8893 0.9' DEEP, SET ON LINE BETWEEN NE COR. & SE COR. OF SEC. 1 AND AT PRORATED DISTANCE BETWEEN CORNERS.

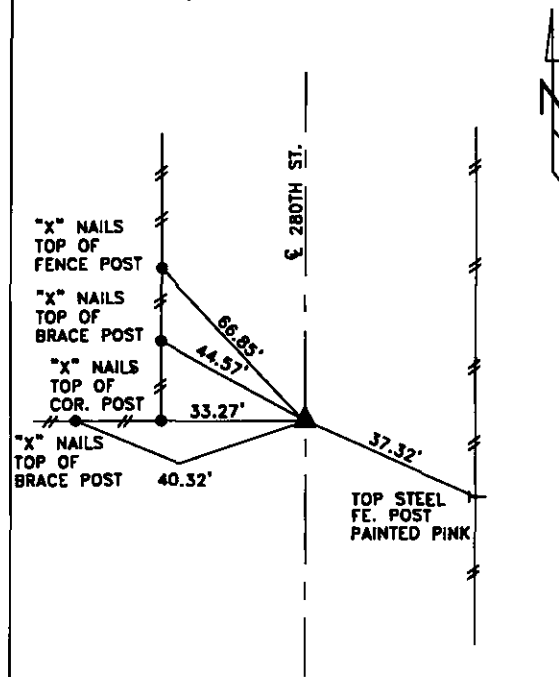


PLAN VIEW SHOWING RELATIVE LOCATION OF MONUMENT AND REFERENCE POINTS.



DISTANCES PLUMB CHAINED

NE CORNER SECTION 1-82-39



DISTANCES PLUMB CHAINED

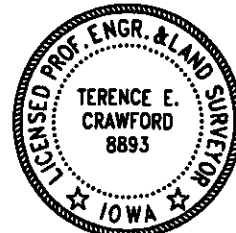
E1/4 CORNER SECTION 1-82-39

I HEREBY CERTIFY THAT THIS LAND SURVEYING DOCUMENT WAS PREPARED AND THE RELATED SURVEY WORK WAS PERFORMED BY ME OR UNDER MY DIRECT PERSONAL SUPERVISION AND THAT I AM A DULY LICENSED LAND SURVEYOR UNDER THE LAWS OF THE STATE OF IOWA.

Terence E. Crawford 10-28-11
TERENCE E. CRAWFORD DATE

IA LICENSE NO. 8893

EXP. DATE DECEMBER 31, 2011



SE PROJECT NO. 23411
DRAWN BY: LLL