

INDEX DM/DM  
 SCAN DM  
 FOLLOW UP DM  
 PROOF DM

Instrument #: 2022-0746  
 03/18/2022 09:54:17 AM Total Pages: 1  
 PLC PLAT COR CERT  
 Recording Fee: \$0.00 Transfer Tax: \$0  
 Denise Meeves, Recorder, Crawford County Iowa



PREPARED BY: PAUL ASSMAN-CRAWFORD COUNTY ENGINEER'S OFFICE-COURTHOUSE-DENISON, IA.-712-263-2449

## UNITED STATES PUBLIC LAND SURVEY CORNER CERTIFICATE OF

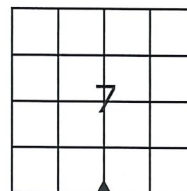
LAND SURVEY MONUMENT SITUATED IN WASHINGTON TOWNSHIP, THE SOUTH 1/4 CORNER OF SECTION 7,  
T-82N, R-39W OF THE FIFTH P.M. CRAWFORD COUNTY, IOWA.

PREVIOUSLY RECORDED AS NO. 2006-0556

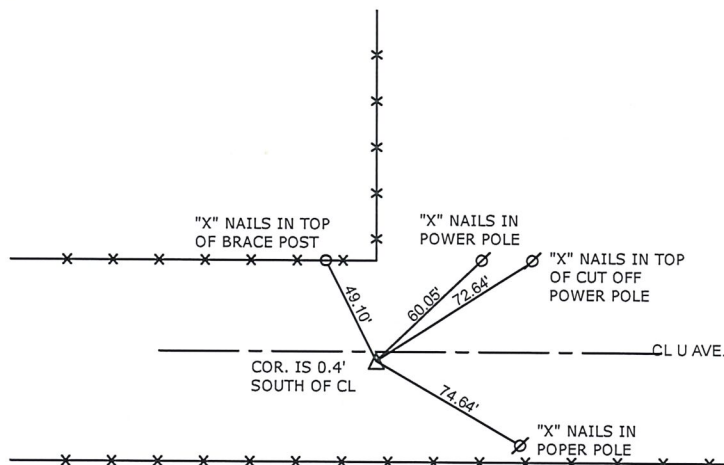
### MONUMENT DESCRIPTION AND REMARKS

SOUTH 1/4 CORNER SEC. 7-82-39

FOUND CARRIAGE BOLT  
 COUNTY RESURFACED ROAD AND SET 1/2" X 4" CARRIAGE  
 BOLT 1/4" BELOW SURFACE AND RETIED



SOUTH 1/4 CORNER SEC. 7-82-39



ALL TIE DISTANCES ARE MEASURED HORIZONTALLY USING GPS

**CERTIFICATION:**

I HEREBY CERTIFY THAT THIS LAND SURVEYING DOCUMENT WAS PREPARED AND THE RELATED SURVEY WORK WAS PERFORMED BY ME OR UNDER MY DIRECT PERSONAL SUPERVISION AND THAT I AM A DULY LICENSED LAND SURVEYOR UNDER THE LAWS OF THE STATE OF IOWA.

Paul J. Assman  
 Signature

3/16/22  
 Date of Survey

PAUL J. ASSMAN                      11982                      12-31-22  
 Typed Name                      L.S. No.                      License Renewal Date

Pages covered by this seal 1

