

INDEX DM/DM
 SCAN DM
 FOLLOW UP DM
 PROOF DM

Instrument #: 2022-0743
 03/18/2022 09:54:17 AM Total Pages: 1
 PLC PLAT COR CERT
 Recording Fee: \$0.00 Transfer Tax: \$0
 Denise Meeves, Recorder, Crawford County Iowa



PREPARED BY: PAUL ASSMAN-CRAWFORD COUNTY ENGINEER'S OFFICE-COURTHOUSE-DENISON, IA.-712-263-2449

UNITED STATES PUBLIC LAND SURVEY CORNER CERTIFICATE OF

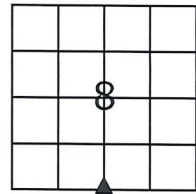
LAND SURVEY MONUMENT SITUATED IN WASHINGTON TOWNSHIP, THE SOUTH 1/4 CORNER OF SECTION 8,
T-82N, R-39W OF THE FIFTH P.M. CRAWFORD COUNTY, IOWA.

PREVIOUSLY RECORDED AS NO. 2012-1076

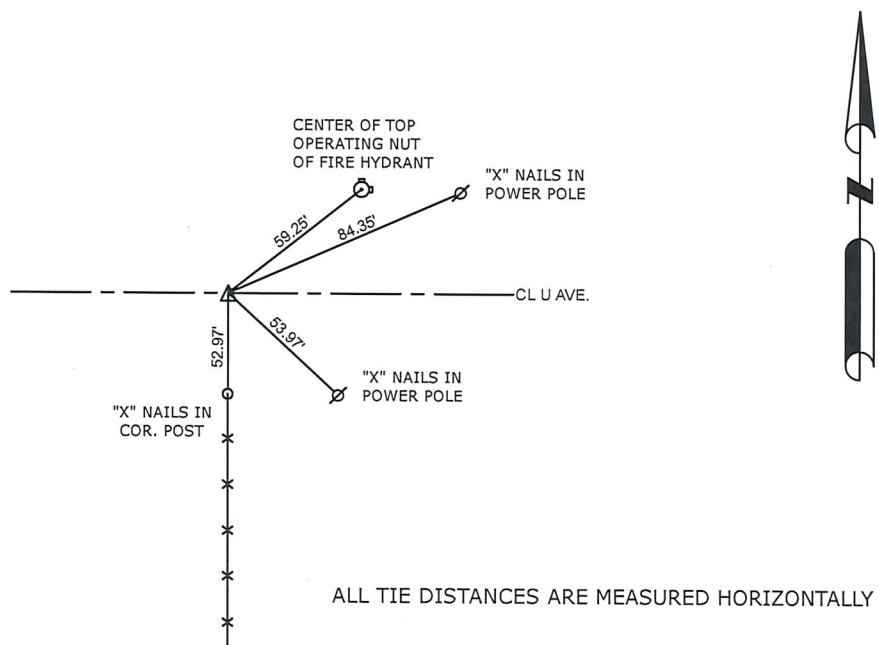
MONUMENT DESCRIPTION AND REMARKS

SOUTH 1/4 CORNER SEC. 8-82-39

FOUND CARRIAGE BOLT
 COUNTY RESURFACED ROAD AND SET 1/2" X 4" CARRIAGE
 BOLT 1/4" BELOW SURFACE AND RETIED



SOUTH 1/4 CORNER SEC. 8-82-39



ALL TIE DISTANCES ARE MEASURED HORIZONTALLY USING GPS

CERTIFICATION:

I HEREBY CERTIFY THAT THIS LAND SURVEYING DOCUMENT WAS PREPARED AND THE RELATED SURVEY WORK WAS PERFORMED BY ME OR UNDER MY DIRECT PERSONAL SUPERVISION AND THAT I AM A DULY LICENSED LAND SURVEYOR UNDER THE LAWS OF THE STATE OF IOWA.

Paul J. Assman
 Signature

3/16/22
 Date of Survey

PAUL J. ASSMAN 11982 12-31-22
 Typed Name L.S. No. License Renewal Date

Pages covered by this seal 1

