

INDEXED   
FOLLOW UP   
APPROVED

2001 APR 11 PM 2:04

INST. NO. 2001-0856  
DENISE HEEVES, RECORDER  
*Denise Heeves*  
FEE \$6.00

WARDER C. HILLHOUSE, JR. MHE ENGINEERING P.C. 300 W. MCKINLEY JEFFERSON, IA. (515)386-4101

# UNITED STATES PUBLIC LAND SURVEY CORNER CERTIFICATE OF

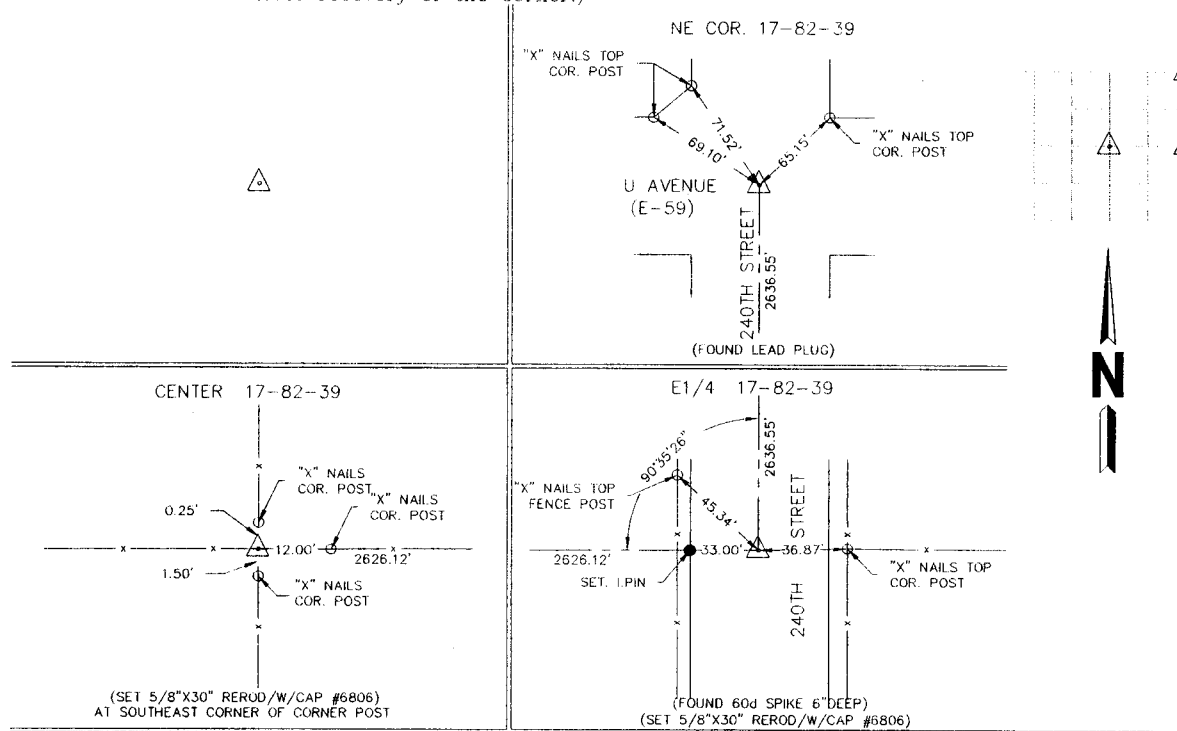
Land Survey Monuments in Section 17, Township 82, Range 39, of the Fifth Principal Meridian, CRAWFORD County, Iowa.  
Previously recorded in \_\_\_\_\_ in County Recorder's Office.  
(book, page, document number, etc.)

(Show reason for preparing this certificate, the evidence and detailed procedures used in establishing the corner positions and monumentation found or placed.)

Monument Description and Remarks: \_\_\_\_\_  
\_\_\_\_\_  
\_\_\_\_\_

## PLAN - VIEW

(Show a minimum of three reference ties to durable physical objects, relevant monuments and physical conditions that will enable recovery of the corner.)



I hereby certify that land surveying document and the related survey work was performed by me or under my direct personal supervision and that I am a duly licensed land surveyor under the laws of the state of Iowa.

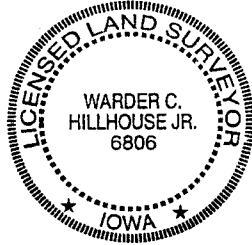
Signature: *Warder C. Hillhouse Jr.*  
Name typed or printed: Warder C. Hillhouse, Jr.

Date: 4/6/01 Lic. No. 6806

License Renewal Dec. 31, 2001

Date Surveyed: 04/01

Seal



### List Corners to be Indexed

Corners	Section	Twp	Range
SE COR.	8	82	39
SW COR.	9	82	39
NW COR.	16	82	39
W1/4 COR.	16	82	39
NE COR.	17	82	39
E1/4 COR.	17	82	39
CENTER	17	82	39

File No. 01043-1



M.H.F. ENGINEERING, P.C.  
ENGINEERS - LAND SURVEYORS  
Jefferson, Iowa 50129 Ph. (515)386-4101