

INDEXED       
 FOLLOW UP       
 PROOFED       
 SCANNED     

Crawford County Recorder  
 Denise Meeves  
**Fee Book 2012-2946**  
 12/12/2012 8:02:22 PM  
 ETC PLAT CORNER CER  
 Book: Page: # Pages: 1  
 Total Fees: \$7.00

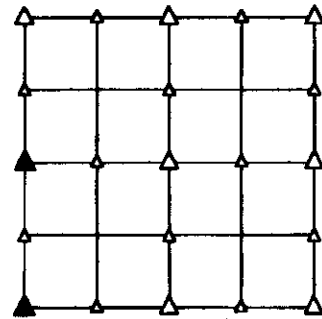
PREPARED BY - JOSEPH P. RUESCHENBERG - SUNDQUIST ENGINEERING - 120 S. MAIN, DENISON, IOWA 51442 - PHONE (712) 263-8118

**UNITED STATES PUBLIC LAND SURVEY CORNER CERTIFICATE  
 OF**

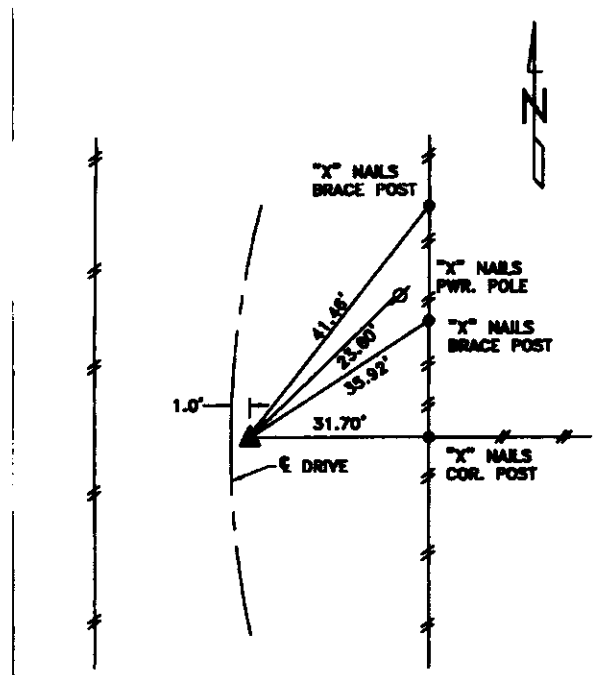
LAND SURVEY MONUMENT SITUATED IN SECTION 5, T 82 N, R 40 W OF  
 THE 5TH P.M., CRAWFORD COUNTY, IOWA.  
 PREVIOUSLY RECORDED IN BOOK     , PAGE     , OTHER     

**MONUMENT DESCRIPTION AND REMARKS**

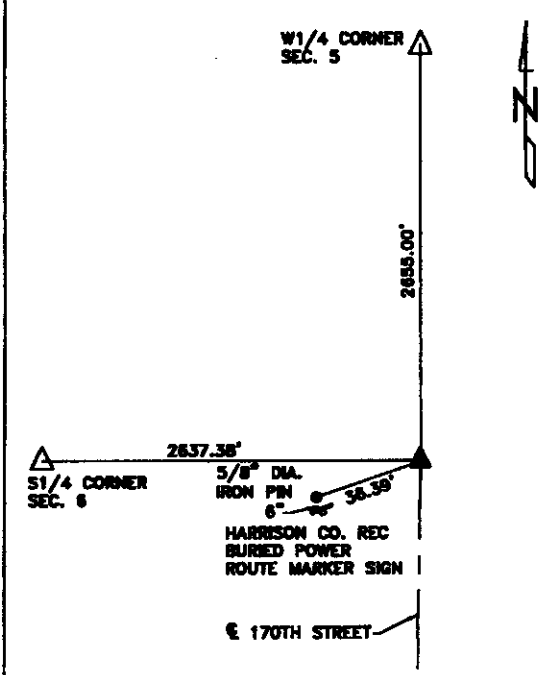
W1/4 CORNER - SET 5/8" DIA. X 18" IRON PIN W/ORANGE CAP  
 #14709 0.3' DEEP, SET FROM LOCAL EVIDENCE.  
  
 SW CORNER - SET 5/8" DIA. X 18" IRON PIN W/ORANGE CAP  
 #14709 0.5' DEEP, SET FROM LOCAL EVIDENCE.



**PLAN VIEW SHOWING RELATIVE LOCATION OF MONUMENT AND REFERENCE POINTS.**



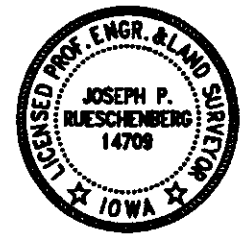
DISTANCES PLUMB CHAINED  
 W1/4 CORNER SECTION 5-82-40



DISTANCES PLUMB CHAINED  
 SW CORNER SECTION 5-82-40

I HEREBY CERTIFY THAT THIS LAND SURVEYING DOCUMENT WAS PREPARED  
 AND THE RELATED SURVEY WORK WAS PERFORMED BY ME OR UNDER MY  
 DIRECT PERSONAL SUPERVISION AND THAT I AM A DULY LICENSED LAND  
 SURVEYOR UNDER THE LAWS OF THE STATE OF IOWA.

*Joseph P. Rueschenberg* 12-11-2012  
 JOSEPH P. RUESCHENBERG DATE  
 IA LICENSE NO. 14709 EXP. DATE DECEMBER 31, 2012



SE PROJECT NO. 25312  
 DRAWN BY: LLL