



PREPARED BY - TERENCE E. CRAWFORD - SUNDQUIST ENGINEERING - 120 S. MAIN, DENISON, IOWA 51442 - PHONE (712) 263-8118

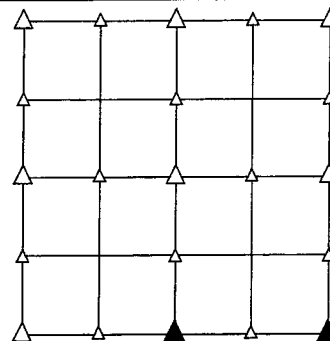
UNITED STATES PUBLIC LAND SURVEY CORNER CERTIFICATE OF

LAND SURVEY MONUMENT SITUATED IN SECTION 34, T 82 N, R 40 W OF
THE 5TH P.M., CRAWFORD COUNTY, IOWA.
PREVIOUSLY RECORDED IN BOOK , PAGE , OTHER

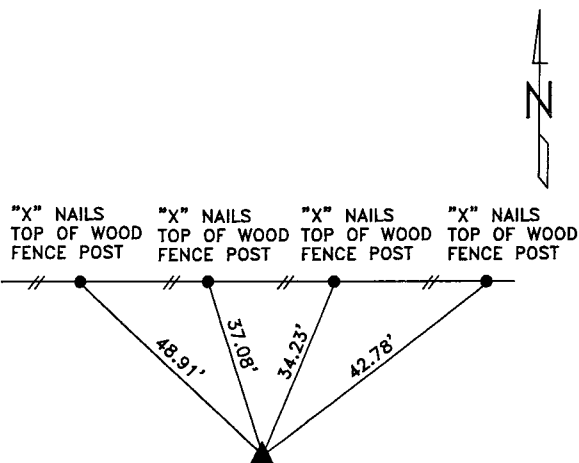
MONUMENT DESCRIPTION AND REMARKS

S1/4 CORNER - SET 5/8" DIA. X 18" IRON PIN W/YELLOW CAP
#8893, 0.4' DEEP, SET ON LINE BETWEEN SW COR.
OF SE1/4 SW1/4 & SE COR. OF SECTION 34.

SE CORNER - SET 5/8" DIA. X 18" IRON PIN W/YELLOW CAP
#8893, 0.35' DEEP, SET ON SPLIT OF COUNTY ROAD
R-O-W FENCES.

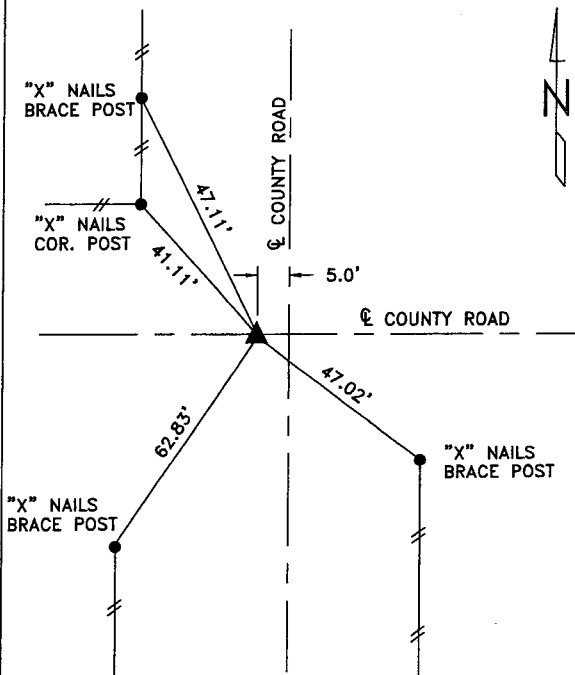


PLAN VIEW SHOWING RELATIVE LOCATION OF MONUMENT AND REFERENCE POINTS.



DISTANCES SLOPE CHAINED

S1/4 CORNER SECTION 34-82-40



DISTANCES SLOPE CHAINED

SE CORNER SECTION 34-82-40

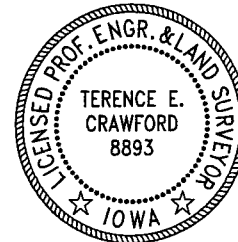
I HEREBY CERTIFY THAT THIS LAND SURVEYING DOCUMENT WAS PREPARED
AND THE RELATED SURVEY WORK WAS PERFORMED BY ME OR UNDER
MY DIRECT SUPERVISION AND THAT I AM A DULY LICENSED LAND
SURVEYOR UNDER THE LAWS OF THE STATE OF IOWA.

Terence E. Crawford
TERENCE E. CRAWFORD
IA LICENSE NO. 8893

APR 04 2005

DATE

EXP. DATE DECEMBER 31, 2005



SE PROJECT NO. 21605
DRAWN BY: LLL