

INDEXED SM
 FOLLOW UP _____
 PROOFED _____
 SCANNED _____

Instrument #: 2021-0739
 04/02/2021 02:24:20 PM Total Pages: 1
 PLC PLAT COR CERT
 Recording Fee: \$0.00 Transfer Tax: \$0
 Denise Meeves, Recorder, Crawford County Iowa



PREPARED BY: PAUL ASSMAN-CRAWFORD COUNTY ENGINEER'S OFFICE-COURTHOUSE-DENISON, IA.-712-263-2449

UNITED STATES PUBLIC LAND SURVEY CORNER CERTIFICATE
 OF

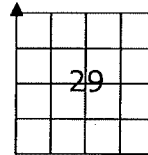
LAND SURVEY MONUMENT SITUATED IN UNION TOWNSHIP, THE NORTHWEST CORNER OF SECTION 29, T-82N,
 R-40W OF THE FIFTH P.M. CRAWFORD COUNTY, IOWA.

PREVIOUSLY RECORDED IN THE UNION TWP FIELD BOOK PAGE 60, COUNTY ENGINEERS OFFICE

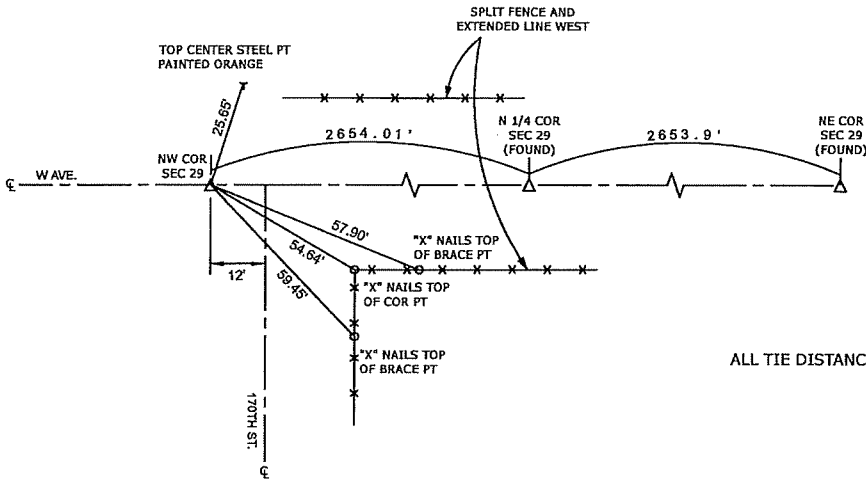
MONUMENT DESCRIPTION AND REMARKS

NORTHWEST CORNER SEC. 29-82-40

NO EXISTING SECTION CORNER OR TIES FOUND UPON INITIAL INSPECTION. SET CORNER IN THE EAST-WEST DIRECTION USING THE ORIGINAL CHAINING NOTES (I.E. EQUAL DISTANCES) FOR THE NORTH LINE OF SECTION 29, FOUND N 1/4 CORNER AND FOUND NE CORNER OF SECTION 29. THE CORNER LOCATION HITS WITHIN 2.6 FEET OF A LINE EXTENDING FROM AN OLD CORNER POST 1/4 MILE TO THE NORTH AND A SPLIT OF ROAD FENCES APPROXIMATELY 1/4 MILE SOUTH. SET CORNER IN THE NORTH-SOUTH POSITION USING THE EXTENSION OF A LINE CREATED BY A SPLIT OF THE ROAD FENCES TO THE EAST. SET 5/8"x18" REBAR WITH RED CAP #11982 1.0' BELOW SURFACE AND RETIED CORNER.



NORTHWEST CORNER SEC. 29-82-40



ALL TIE DISTANCES ARE SLOPE CHAINED

CERTIFICATION:

I HEREBY CERTIFY THAT THIS LAND SURVEYING DOCUMENT WAS PREPARED AND THE RELATED SURVEY WORK WAS PERFORMED BY ME OR UNDER MY DIRECT PERSONAL SUPERVISION AND THAT I AM A DULY LICENSED LAND SURVEYOR UNDER THE LAWS OF THE STATE OF IOWA.

Signature

3/26/21
 Date of Survey

PAUL J. ASSMAN
 Typed Name

11982
 L.S. No.

12-31-22
 License Renewal Date

Pages covered by this seal 1

