

INDEXED \_\_\_\_\_  
 FOLLOW UP \_\_\_\_\_  
 PROOFED \_\_\_\_\_  
 SCANNED \_\_\_\_\_

REC 009230



Crawford County Recorder Denise Meeves  
 FEE BOOK 2006-0237 1/31/2006 @ 09:32AM  
 PIC PLAT CORNER CERBook: Page: #: 1  
 Total Fees: \$7.00

WARDER C. HILLHOUSE, JR. MHF ENGINEERING P.C. 300 W. MCKINLEY JEFFERSON, IA. (515)386-4101  
**UNITED STATES PUBLIC LAND SURVEY CORNER CERTIFICATE OF**

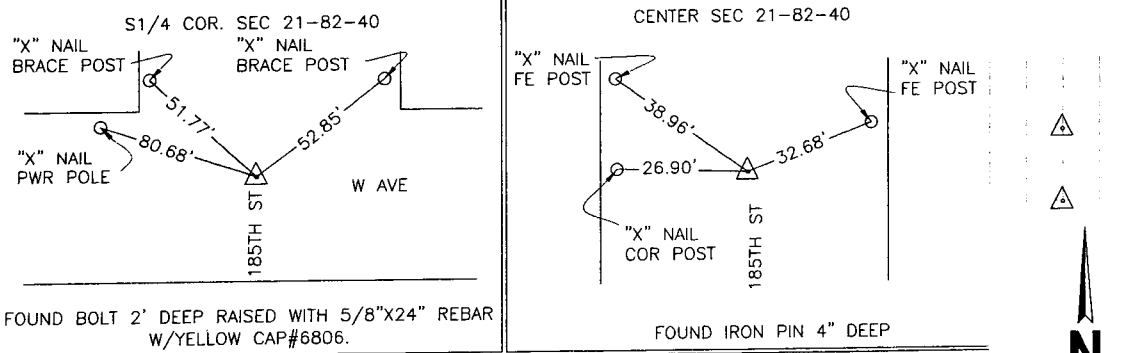
Land Survey Monuments in Section 21, Township 82, Range 40, of the Fifth Principal Meridian, CRAWFORD County, Iowa. Previously recorded in \_\_\_\_\_ in County Recorder's Office.  
 (book, page, document number, etc.)

(Show reason for preparing this certificate, the evidence and detailed procedures used in establishing the corner positions and monumentation found or placed.)

Monument Description and Remarks: CORNERS LOCATED FOR SURVEY WORK IN SECTION.

**PLAN - VIEW**

(Show a minimum of three reference ties to durable physical objects, relevant monuments and physical conditions that will enable recovery of the corner.)



I hereby certify that this land surveying document and the related survey work was performed by me or under my direct personal supervision and that I am a duly licensed land surveyor under the laws of the state of Iowa.  
 Signature: Warder C. Hillhouse Jr.  
 Warder C. Hillhouse, Jr.  
 Date: 1/27/06 Lic. No. 6806  
 License Renewal Dec. 31, 2007  
 Date Surveyed: 1/26/06

Seal

List Corners to be Indexed			
Corners	Section	Twp	Range
S1/4 COR.	21	82	40
CENTER	21	82	40

File No. 06015-1

M.H.F. ENGINEERING, P.C.  
 ENGINEERS - LAND SURVEYORS  
 Jefferson, Iowa 50129 Ph. (515)386-4101