

2000 FEB 28 AM 8:40

INST. NO. 200-0480
DENISE MEEVES, RECORDER
Denise Meeves
FEE: 6.00

RECEIVED
OFFICE OF THE
CLERK OF COURTS
CRAWFORD COUNTY

PREPARED BY - TERENCE E. CRAWFORD - SUNDQUIST ENGINEERING - 120 S. MAIN, DENISON, IOWA 51442 - PHONE (712)263-8118

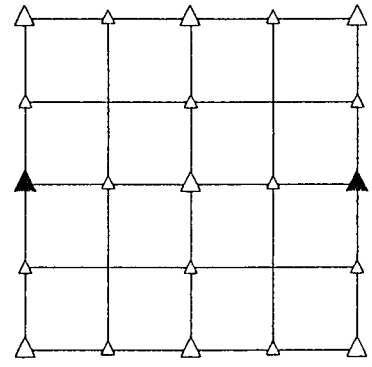
UNITED STATES PUBLIC LAND SURVEY CORNER CERTIFICATE OF

LAND SURVEY MONUMENT SITUATED IN SECTION 26, T 82 N, R 40 W OF
THE 5TH P.M., CRAWFORD COUNTY, IOWA.
PREVIOUSLY RECORDED IN BOOK _____, PAGE _____, OTHER _____

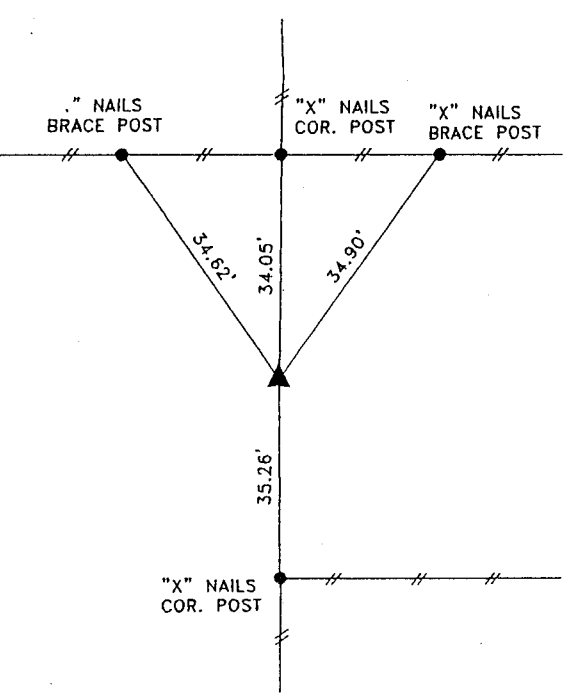
MONUMENT DESCRIPTION AND REMARKS

W1/4 CORNER - SET 5/8" IRON PIN W/CAP #8893 4" DEEP, SET ON SPLIT OF R.O.W. AND ON LINE WITH FENCES NORTH AND SOUTH

E1/4 CORNER - SET 5/8" IRON PIN W/CAP #8893 4" DEEP, SET ON LINE BETWEEN SE COR. AND CORNER POST AND 66' SOUTH OF CORNER POST

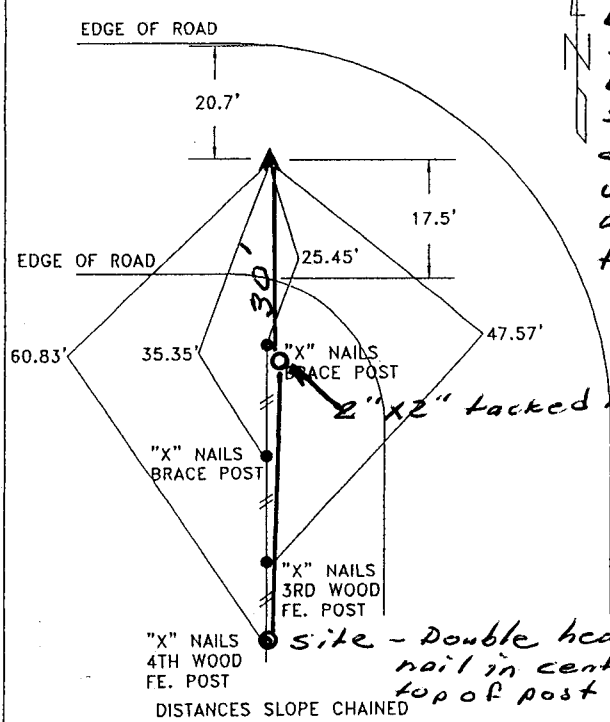


PLAN VIEW SHOWING RELATIVE LOCATION OF MONUMENT AND REFERENCE POINTS.



DISTANCES SLOPE CHAINED

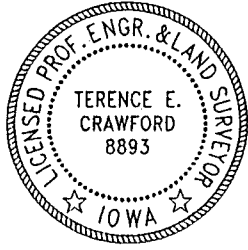
W1/4 CORNER SECTION 26-82-40



DISTANCES SLOPE CHAINED

E1/4 CORNER SECTION 26-82-40

11-10-04
Found 5/8" iron pin bent and laying on side @ 25.45' from brace post.
Set 1" re-bar 3'-4' deep, tied to 2" x 12" wood hub 30' offset. Used 4th wood post for site.



HEREBY CERTIFY THAT THIS LAND SURVEYING DOCUMENT WAS PREPARED AND ALL RELATED SURVEY WORK WAS PERFORMED BY ME OR UNDER MY DIRECT SUPERVISION AND THAT I AM A DULY LICENSED LAND SURVEYOR UNDER THE LAWS OF THE STATE OF IOWA.

Terence E. Crawford
TERENCE E. CRAWFORD
IA LICENSE NO. 8893
DATE FEB 02 2000
EXP. DATE DECEMBER 31, 2001

SEE PROJECT NO. 20300