

INDEXED \_\_\_\_\_  
 FOLLOW UP \_\_\_\_\_  
 PROOFED \_\_\_\_\_  
 SCANNED \_\_\_\_\_

Instrument #: 2019-0221  
 02/11/2019 10:13:17 AM Total Pages: 1  
 PLC PLAT CORNER CER  
 Recording Fee: \$7.00 Transfer Tax: \$0  
 Denise Meeves, Recorder, Crawford County Iowa



WILKE LAND SURVEYING INC. 401 1800th Street Panama, Iowa 51562 (712)489-2898

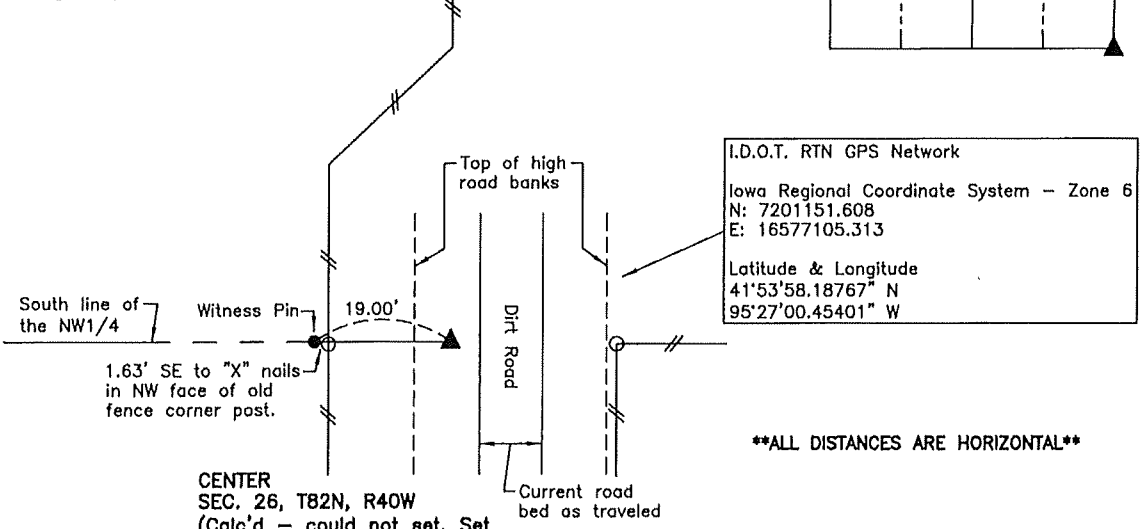
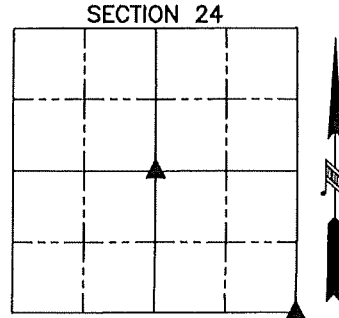
UNITED STATES PUBLIC LAND SURVEY CORNER CERTIFICATE

SECTION 24 TOWNSHIP 82N RANGE 40W COUNTY Crawford

Monument Description and Remarks: \_\_\_\_\_ Reason for Certificate: Survey in the SW1/4 SE1/4

CENTER - Calculated using fences North and East. The calculated location is on the slope of the West bank of a very crooked and eroded dirt road. The bank is ±14' high and is nearly vertical so a monument could not be set. Set a 5/8" diameter by 24" long rebar with an orange cap PLS #17048 (0.4' deep) as a witness pin 19.00' Westerly on the South line of the NW1/4.

SE CORNER - We probed extensively ±4' deep in approximately a 3' diameter circle around an existing corner post, then added another 3' of probing to the North side of said corner post with fences North, East, and South but no WPA monument was found. Set a 5/8" diameter by 24" long rebar with an orange cap PLS #17048 (flush) on the North side of said corner post.

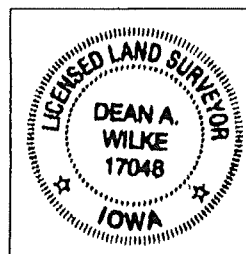


CENTER  
 SEC. 26, T82N, R40W  
 (Calc'd - could not set. Set  
 witness pin 19.00' Westerly  
 on South line of NW1/4)

SE CORNER  
 SEC. 26, T82N, R40W  
 (Set 5/8" dia. rebar  
 w/orange cap PLS  
 #17048, flush)

0.36' South to "X"  
 nails in North face  
 of fence corner post.

I.D.O.T. RTN GPS Network  
 Iowa Regional Coordinate System - Zone 6  
 N: 7198505.295  
 E: 16579737.719  
 Latitude & Longitude  
 41°53'31.95858" N  
 95°26'25.76616" W



List Corners to be Indexed			
Corner	Section	Twp.	Range
CENTER	24	82N	40W
SE CORNER	24	82N	40W

I hereby certify that this land surveying document was prepared and the related survey work was performed by me or under my direct personal supervision and that I am a duly licensed Land Surveyor under the laws of the State of Iowa.

*Dean A. Wilke* 1/23/19  
 Dean A. Wilke Date

License number 17048  
 My license renewal date is December 31, 2019  
 Pages or sheets covered by this seal: This page only