

INDEX \_\_\_\_\_  
 SCAN \_\_\_\_\_  
 FOLLOW UP \_\_\_\_\_  
 PROOF \_\_\_\_\_

Instrument #: 2023-0336  
 02/22/2023 09:24:48 AM Total Pages: 1  
 PLC PLAT COR CERT  
 Recording Fee: \$0.00 Transfer Tax: \$0  
 Sara Meseck, Recorder, Crawford County Iowa



PREPARED BY: PAUL ASSMAN-CRAWFORD COUNTY ENGINEER'S OFFICE-COURTHOUSE-DENISON, IA.-712-263-2449

UNITED STATES PUBLIC LAND SURVEY CORNER CERTIFICATE  
 OF

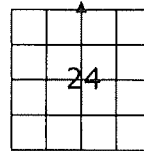
LAND SURVEY MONUMENT SITUATED IN UNION TOWNSHIP, NORTH 1/4 CORNER OF SECTION 24, T-82N, R-40W  
 OF THE FIFTH P.M. CRAWFORD COUNTY, IOWA.

PREVIOUSLY RECORDED AS NO. 99-2262

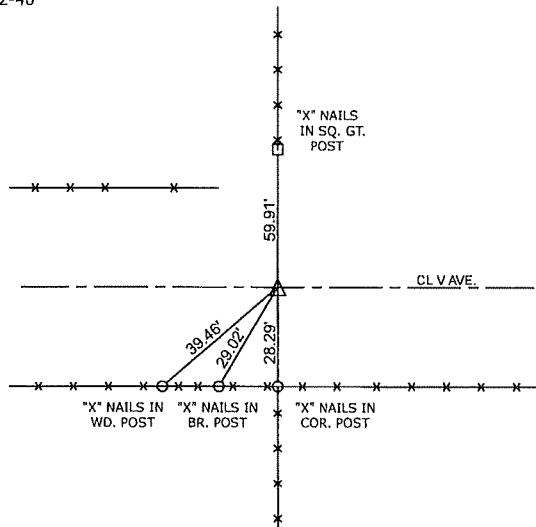
MONUMENT DESCRIPTION AND REMARKS

NORTH 1/4 CORNER SEC. 24-82-40

CORNER WAS NOT FOUND AND NO TIES  
 FOUND. COUNTY GRADED ROAD AND SET 1/2"  
 X 18" REBAR WITH RED CAP#11982 1.0' DEEP  
 ONLINE AND ON SPLIT OF DISTANCE BETWEEN  
 NW CORNER AND NE CORNER. POSITION  
 ALIGNS WELL WITH FENCE TO NORTH AND  
 SOUTH AND CENTER LINE OF R.O.W. CORNER  
 WAS RETIED.



NORTH 1/4 CORNER SEC. 24-82-40



ALL TIE DISTANCES ARE MEASURED HORIZONTALLY USING GPS

CERTIFICATION:

I HEREBY CERTIFY THAT THIS LAND SURVEYING DOCUMENT WAS PREPARED AND THE RELATED SURVEY  
 WORK WAS PERFORMED BY ME OR UNDER MY DIRECT PERSONAL SUPERVISION AND THAT I AM A DULY  
 LICENSED LAND SURVEYOR UNDER THE LAWS OF THE STATE OF IOWA.

*Paul J. Assman*  
 Signature

2/16/23  
 Date of Survey

PAUL J. ASSMAN  
 Typed Name

11982  
 L.S. No.

12-31-24  
 License Renewal Date

Pages covered by this seal 1

