

INDEXED _____
 FOLLOW UP _____
 PROOFED _____
 SCANNED _____

Instrument #: 2019-0221
 02/11/2019 10:13:17 AM Total Pages: 1
 PLC PLAT CORNER CER
 Recording Fee: \$7.00 Transfer Tax: \$0
 Denise Reeves, Recorder, Crawford County Iowa



WILKE LAND SURVEYING INC. 401 1800th Street Panama, Iowa 51562 (712)489-2898

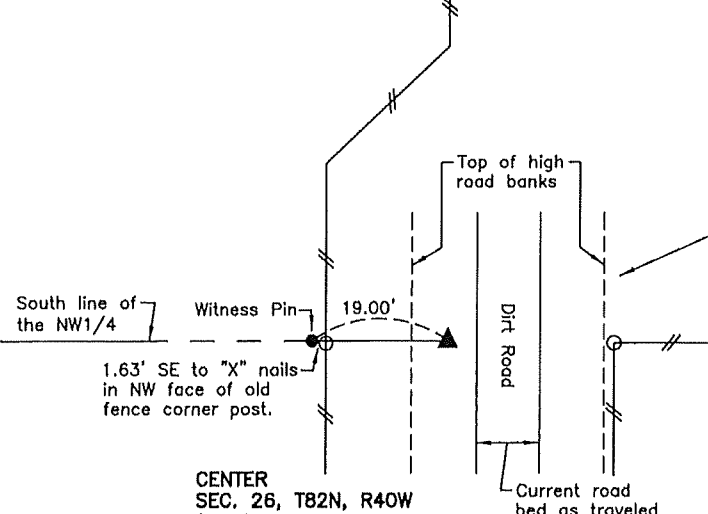
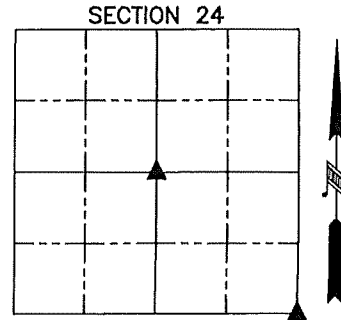
UNITED STATES PUBLIC LAND SURVEY CORNER CERTIFICATE

SECTION 24 TOWNSHIP 82N RANGE 40W COUNTY Crawford

Monument Description and Remarks: _____ Reason for Certificate: Survey in the SW1/4 SE1/4

CENTER - Calculated using fences North and East. The calculated location is on the slope of the West bank of a very crooked and eroded dirt road. The bank is ±14' high and is nearly vertical so a monument could not be set. Set a 5/8" diameter by 24" long rebar with an orange cap PLS #17048 (0.4' deep) as a witness pin 19.00' Westerly on the South line of the NW1/4.

SE CORNER - We probed extensively ±4' deep in approximately a 3' diameter circle around an existing corner post, then added another 3' of probing to the North side of said corner post with fences North, East, and South but no WPA monument was found. Set a 5/8" diameter by 24" long rebar with an orange cap PLS #17048 (flush) on the North side of said corner post.



I.D.O.T. RTN GPS Network
 Iowa Regional Coordinate System - Zone 6
 N: 7201151.608
 E: 16577105.313
 Latitude & Longitude
 41°53'58.18767" N
 95°27'00.45401" W

****ALL DISTANCES ARE HORIZONTAL****

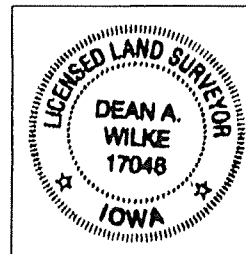
CENTER
 SEC. 26, T82N, R40W
 (Calc'd - could not set. Set witness pin 19.00' Westerly on South line of NW1/4)

I.D.O.T. RTN GPS Network
 Iowa Regional Coordinate System - Zone 6
 N: 7198505.295
 E: 16579737.719
 Latitude & Longitude
 41°53'31.95858" N
 95°26'25.76616" W

SE CORNER
 SEC. 26, T82N, R40W
 (Set 5/8" dia. rebar w/orange cap PLS #17048, flush)

0.36' South to "X" nails in North face of fence corner post.

8.33' East to "X" nails in North face of brace post.



List Corners to be Indexed			
Corner	Section	Twp.	Range
CENTER	24	82N	40W
SE CORNER	24	82N	40W

I hereby certify that this land surveying document was prepared and the related survey work was performed by me or under my direct personal supervision and that I am a duly licensed Land Surveyor under the laws of the State of Iowa.

Dean A. Wilke 1/23/19
 Dean A. Wilke Date

License number 17048
 My license renewal date is December 31, 2019
 Pages or sheets covered by this seal: This page only